

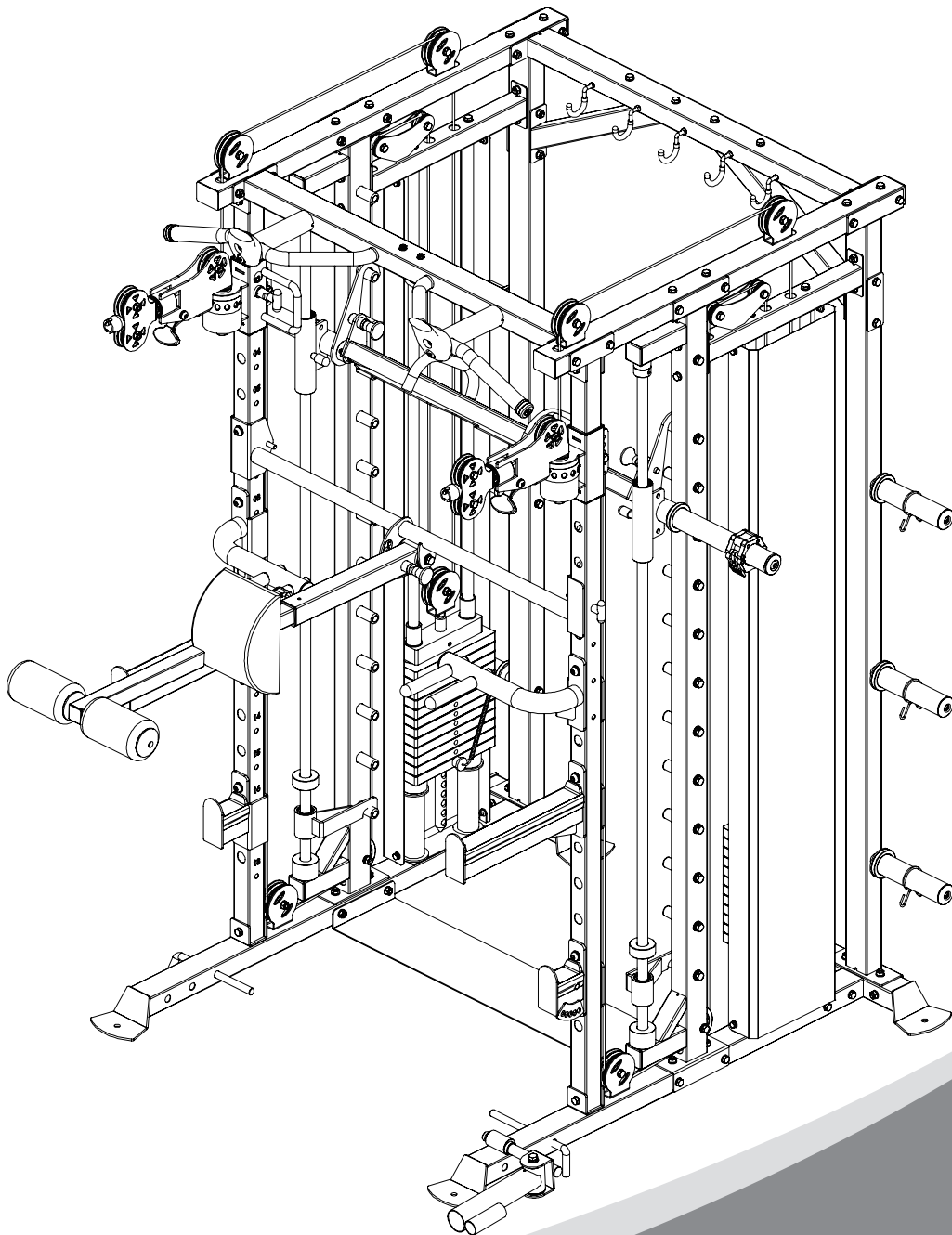


HIT FITNESS

HIT00737

HIT FITNESS ZEUS MULTI GYM

USER MANUAL



contents

parts list	3
parts list	4
parts list	5
Assembly step1	6-7
Assembly step2	8-9
Assembly step3	10-11
Assembly step4	12-13
Assembly step5	14-15
Assembly step6	16-17
Assembly step7	18-19
Assembly step8	20-21
Assembly step9	22-23
Assembly step10	24-25
Assembly step11	26-27
Accessories list	28

parts list

No.	Description	Note	Qty.
1	ground tube		1
2	ground tube left assembly		1
3	Right column assembly		1
4	Anchor connection plate	T3	1
5	Assembly of left column		1
6	Welding piece for rear right		1
7	Rear left column weldment		1
8	hexagon bolt	M10*70	24
9	washer	φ 10	134
10	lock nut	M10	60
11	hexagon bolt	M10 x90	18
12	guide rod		4
13	hexagon bolt	M10*20	8
14	chin up tube		2
15	back connecting tube		1
16	hexagon bolt	M10x95	12
17	Diagonal bracing assembly		2
18	connector piece	T4*50*140	2
19	chin up bar		1
20	front stand tube	50*50*1.5	2
21	Sliding component left		1
22	Sliding component right		1
23	connector piece	T4*50*140	2
24	hexagon bolt	M10x75	4
25	support tube		4
26	selector rod	φ25	2
27	weight stack 60kg	60kg	2
28	spring pin	10×60	2
29	crash pad	φ60×φ27×42	4
30	pulley frame		2
31	Guide rod fixed pipe		2
32	Steel wire rope	Bulbous φ5*8345	2
33	hexagon bolt	M10*25	8
34	long guide rod	Φ25*1850	2

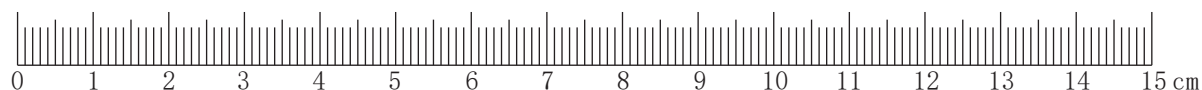
parts list

No.	Description	Note	Qty.
35	The sliding sleeve welding		2
36	Barbell rod		1
37	Barbell rod sleeve		2
38	Safety hook right		1
39	Safety hook left		1
40	Guide rod locking sleeve	$\phi 40 * \phi 25.5 * 35$	2
41	Spring washer	$\phi 12$	4
42	Flat washer	$\phi 12$	4
43	hexagon bolt	M12×40	2
44	Hexagon bolt without head	M8*10	2
45	cushioning	$\phi 60 \times \phi 27 \times 42$	2
46	cushion	$\phi 60 \times \phi 26 \times 25$	2
47	Barbell card	$\Phi 85 \times \Phi 50 \times H 49$	2
48	shield	T1	2
49	Spring washer	$\phi 8$	12
50	Flat washer	$\phi 8$	12
51	Hexagon bolt	M8×16	8
52	Short hook assembly		5
53	Barbell hanging rod		6
54	Spring gasket	$\phi 10$	6
55	The butterfly clip	$\phi 50$	6
56	Safety short - right assembly		1
57	Safety short - left assembly		1
58	Long right safety gear		1
59	Long left safety gear		1
60	Barbell rod sleeve welding		1
61	Turn rod assembly		1
63	dip bar right		1
64	dip bar left		1
65	Fix elastic rope L pin	$\phi 17 \times 250 \times 77L$	2
66	footplate		1
68	Big pull up		1
69	Handle assembly		2
70	Diagonal handle welds		1

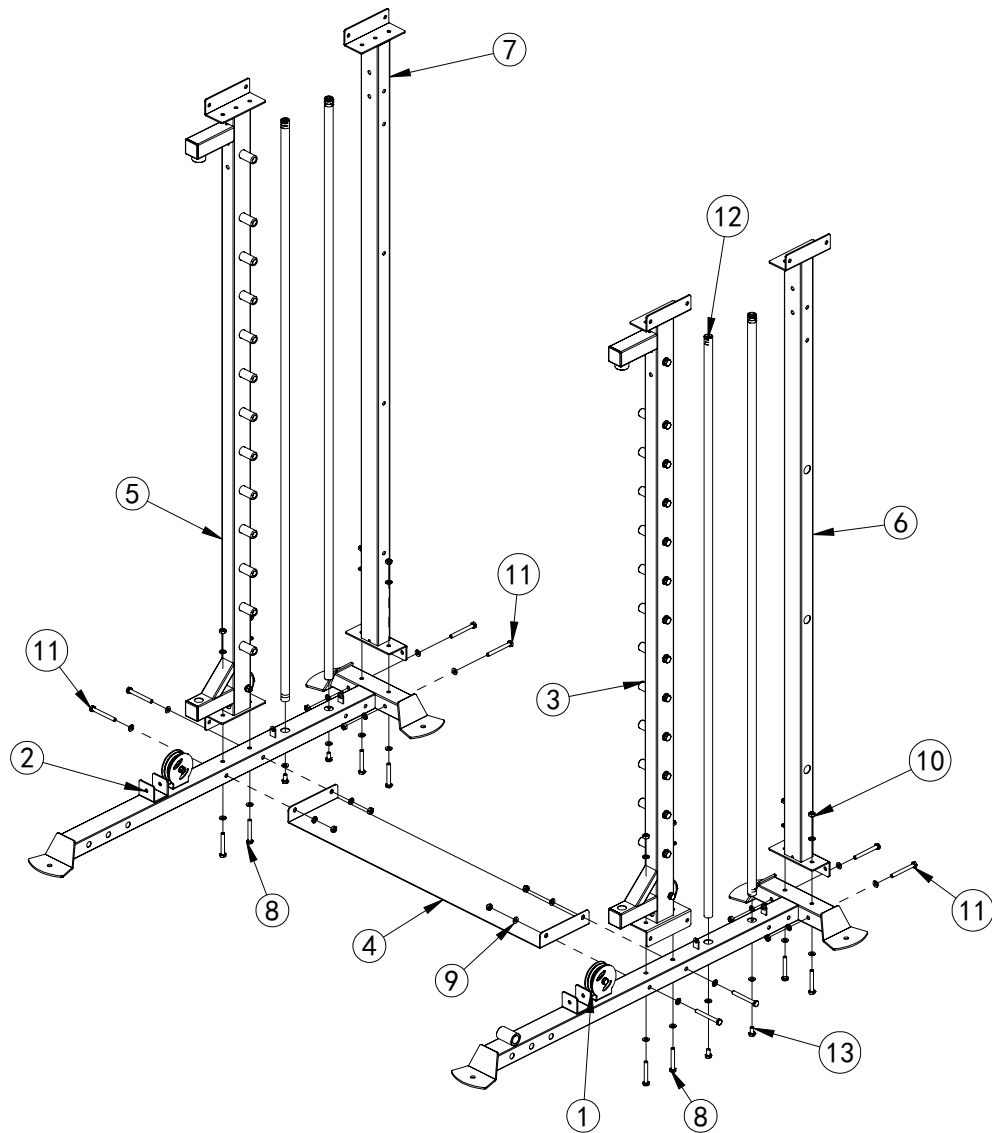
parts list

No.	Description	Note	Qty.
71	Triangle handle assembly		1
72	Small pull handle		1
73	Back to pull with		1
74	Biceps rope	$\phi 28*690$	1
75	ankle cuff		1
76	Chain + gourd hook		2
77	horizontal tie rod assembly		1
78	Assembly of puller		1
79	Hoist hook		5
81	Magnetic latch	$\phi 10 \times 100$	2
82	The top waist assembly		1
83	85T-bolt-black	$\phi 10 \times 85$	2
84	Leg press adjustment assembly		1
85	Top waist supervisor assembly		1
86	inner shaft	$\phi 25 \times 70 - M12$	1
87	Hexagon bolt	$M12 \times 25$	2
88	Top of the back pad		1
89	Top waist telescopic weldment		1
90	Hexagon bolt	$M8 \times 25$	4
91	Pedal adjustment tube		1

Bolt length gauge

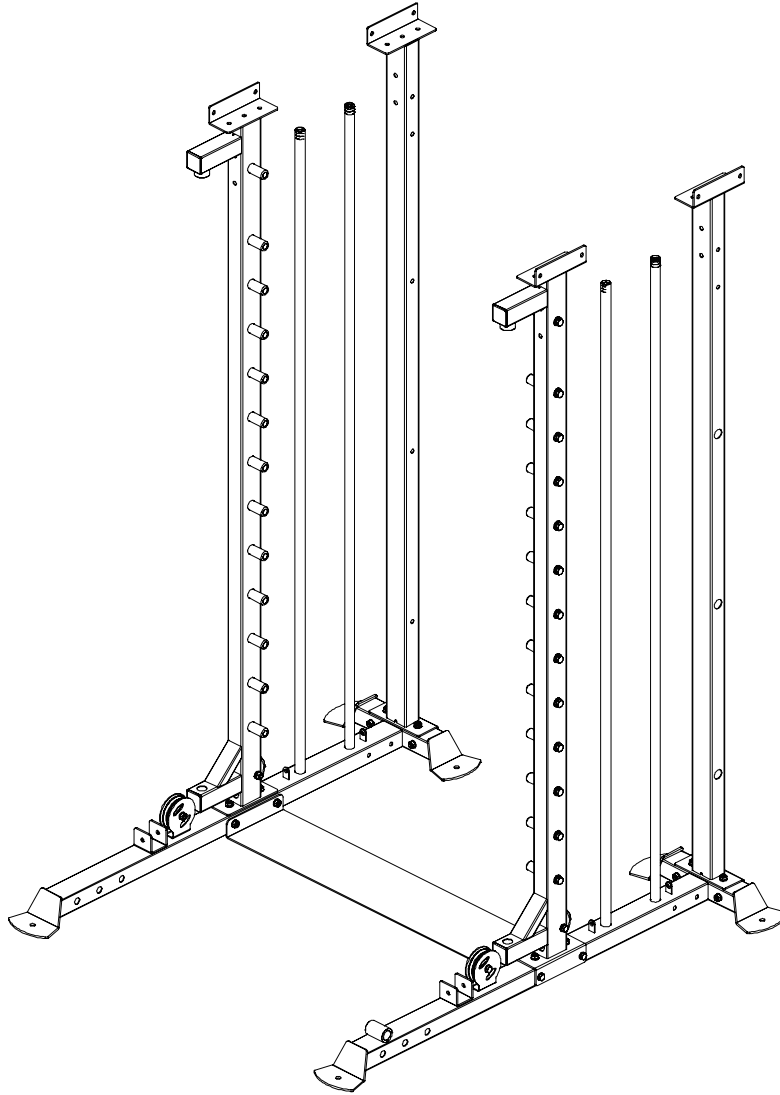


Assembly step (1) explosion drawing



No.	Description	Note	Qty.
1	ground tube		1
2	ground tube left assembly		1
3	Right column assembly		1
4	Anchor connection plate	T3	1
5	Assembly of left column		1
6	Welding piece for rear right		1
7	Rear left column weldment		1
8	hexagon bolt	M10*70	8
9	washer	$\phi 10$	36
10	lock nut	M10	16
11	hexagon bolt	M10*90	8
12	guide rod		4
13	hexagon bolt	M10*20	4

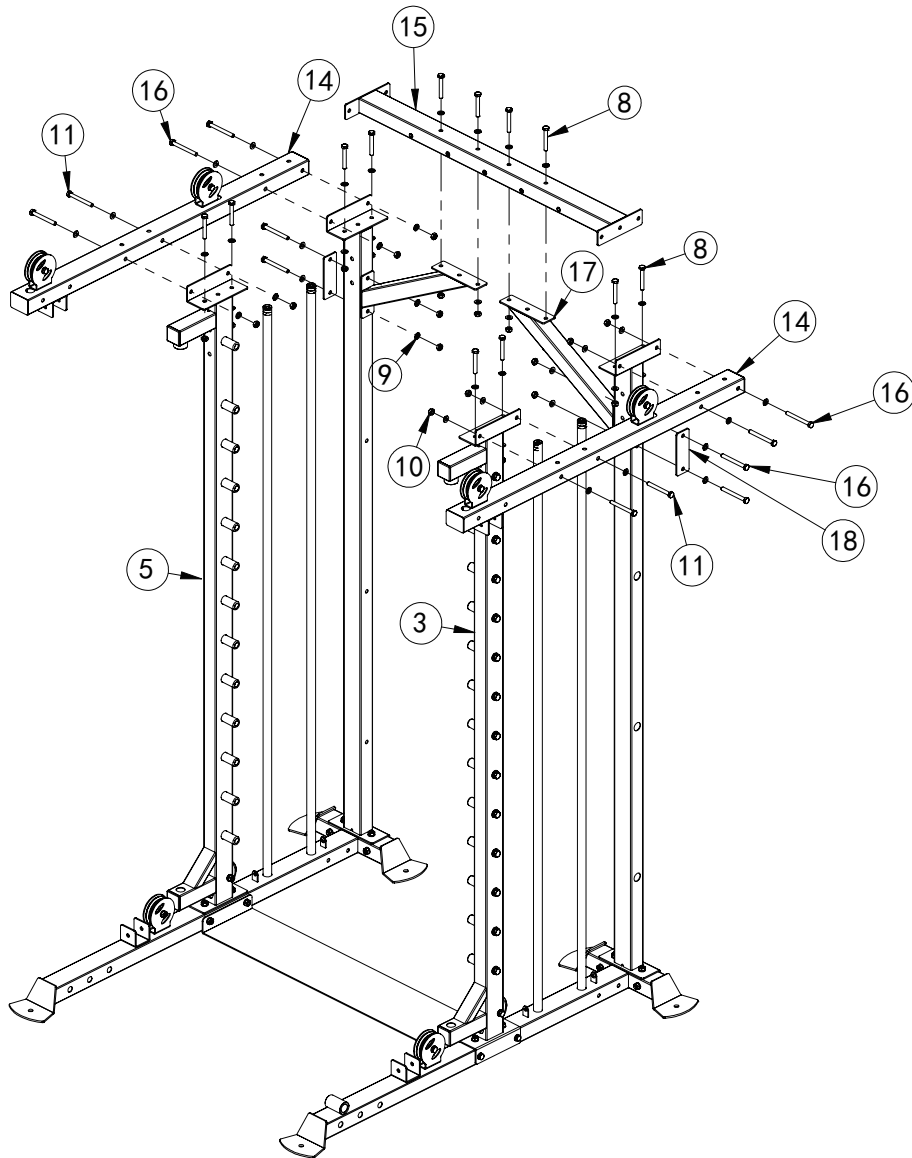
Assembly step(1) drawing



Assembly step(1) assembly Instruction

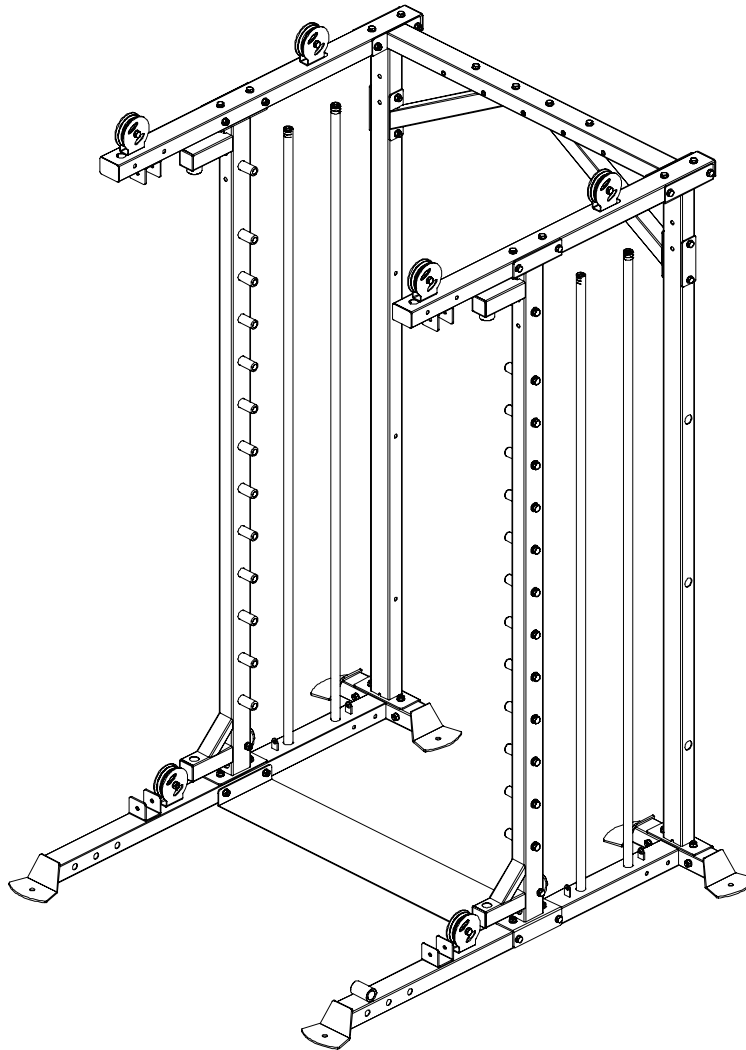
- 1, use M10*70 hexagon bolt (8), M10*90 hexagon bolt (11), $\phi 10$ washer (9), M10 lock nut(10) to connect the ground tube (2) with the Assembly of left column (5);ground tube right assembly(1) of the ground pipe is connected with the right column assembly (3).
2. Install the guide rod (12) on the ground tube (1) and ground tube left assembly (2) with M10*20 hexagon bolt (13), $\phi 10$ washer (9) and M10 lock nut (10).
- 3, use M10*70 hexagon bolt (8), M10*90 hexagon bolt (11), $\phi 10$ washer (9), M10 lock nut(10) to install the Welding piece for rear right (6), rear left column weldment (7) on the ground tube left assembly (2) ground tube(1).
- 4, use M10*90 hexagon bolt (11) $\phi 10$ washer (9), M10 lock nut (10), anchor connecting plate (4) to connect the left and right frame.

Assembly step (2) explosion drawing



No.	Description	Note	Qty.
8	hexagon bolt	M10x70	12
9	washer	Φ10	48
10	lock nut	M10	24
11	hexagon bolt	M10 x90	4
14	chin up tube		2
15	back connecting tube		1
16	hexagon bolt	M10x95	8
17	Diagonal bracing assembly		2
18	connection piece	T4*50*140	2

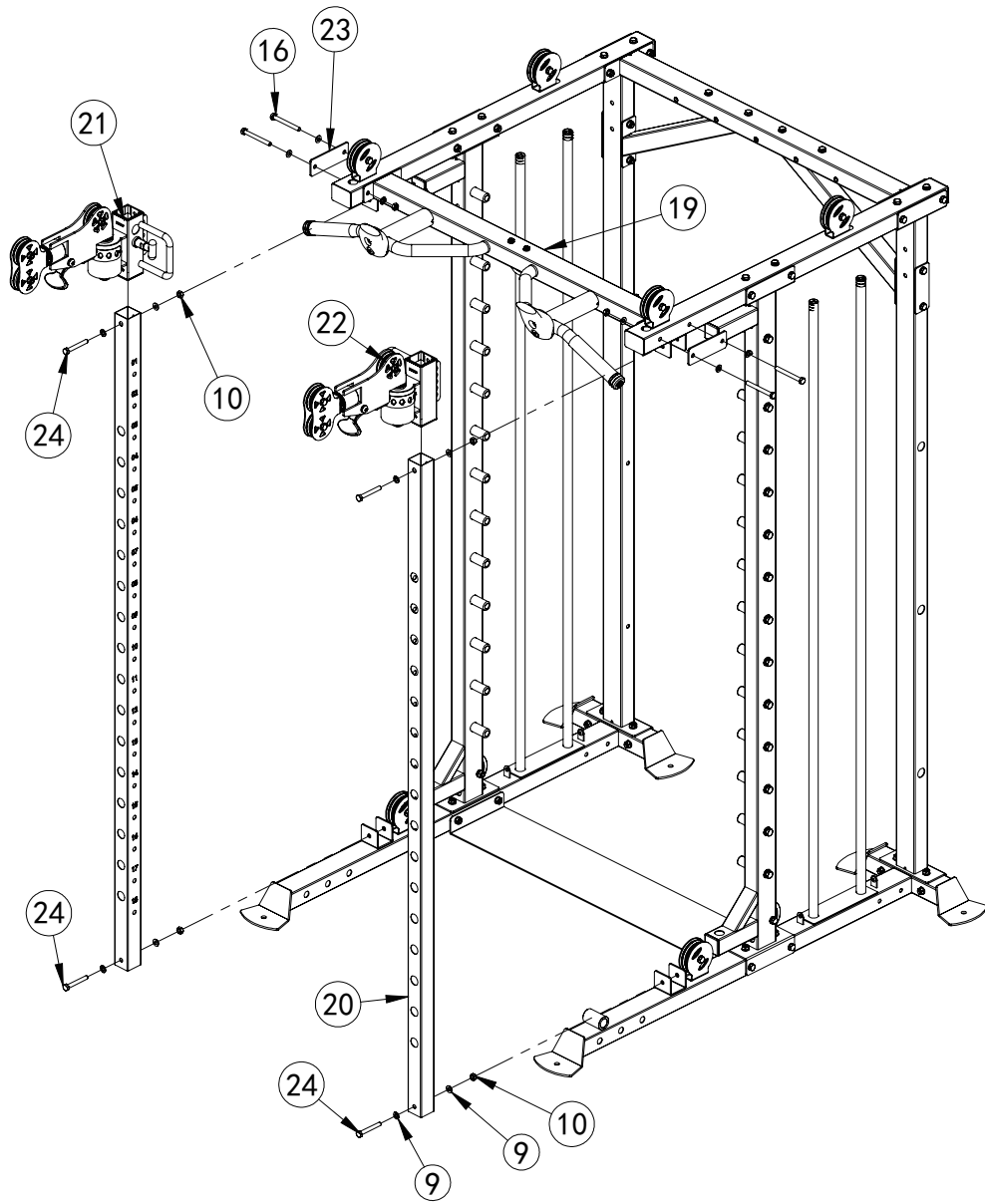
Assembly step(2) drawing



Assembly step(2) assembly Instruction

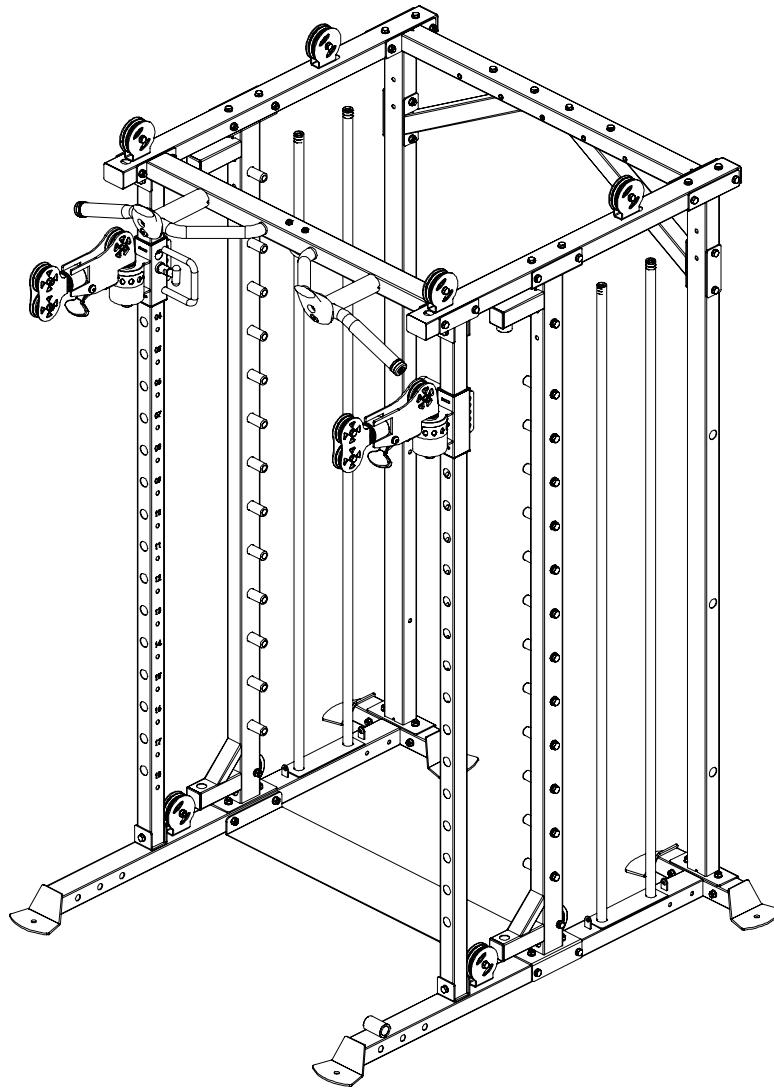
1. Use chin up tube(14) on right column assembly (3) and assembly of left column(5) with M10*70 hexagon bolt (8), M10*90hexagon bolt (11) ϕ 10 washer(9)and M10 lock nut (10).
2. Use back connecting tube(15) on the main machine using M10*95hexagon bolt(11), ϕ 10 washer(9), and M10 lock nut (10).
- 3, Use M10*70 hexagon bolt(8), M10*95 hexagon bolt (16), ϕ 10 washer (9), M10 lock nut (10), 140x50 connection piece (18) to install the diagonal bracing assembly(17) on the main machine.

Assembly step (3) explosion drawing



No.	Description	Note	Qty.
9	washer	ϕ 10	16
10	lock nut	M10	8
16	hexagon bolt	M10x95	4
19	chin up bar		1
20	front stand tube		2
21	Sliding component left		1
22	Sliding component right		1
23	connector piece	140 x50	2
24	hexagon bolt	M10x75	4

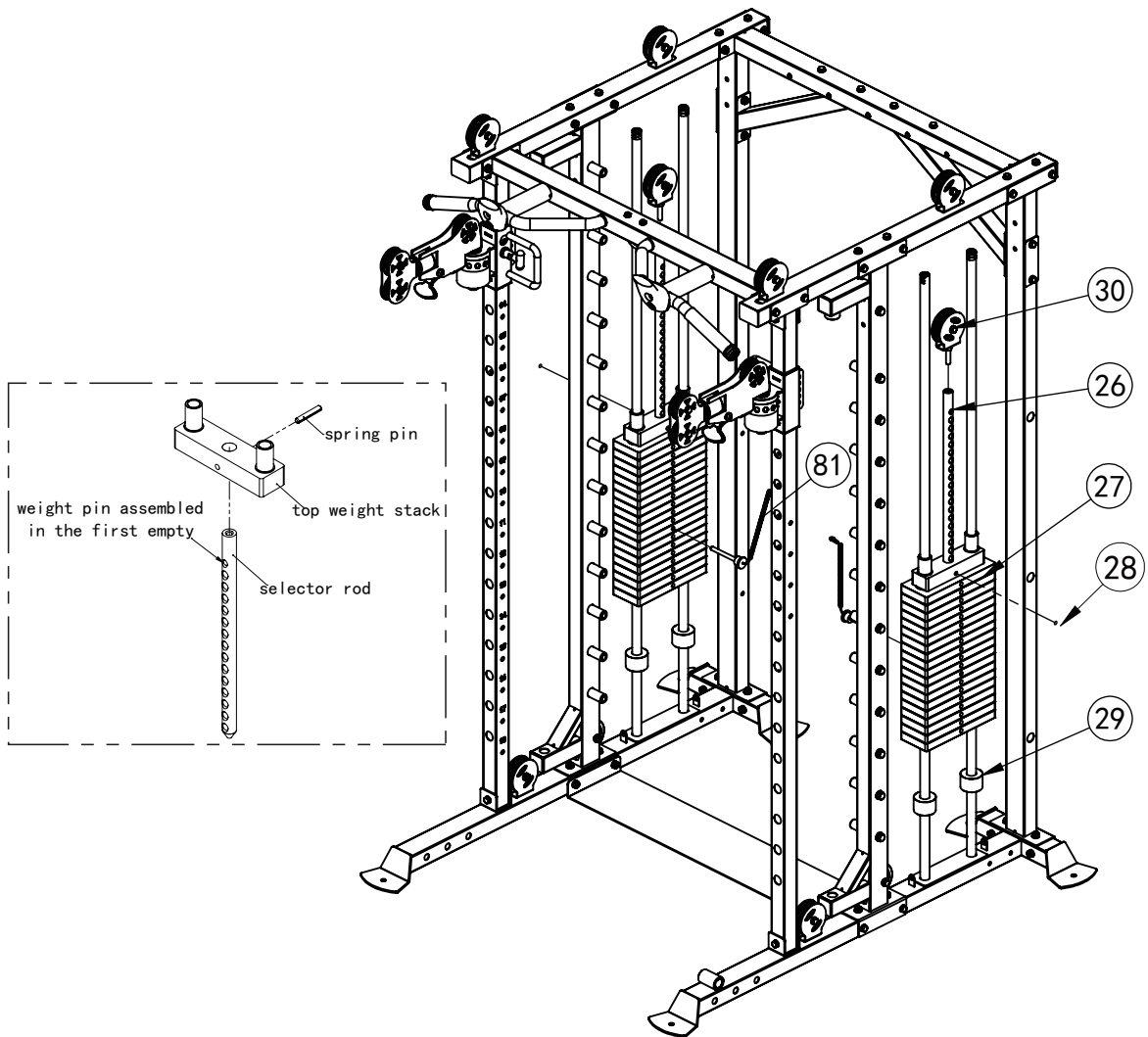
Assembly step (3) drawing



Assembly step (3) assembly instruction

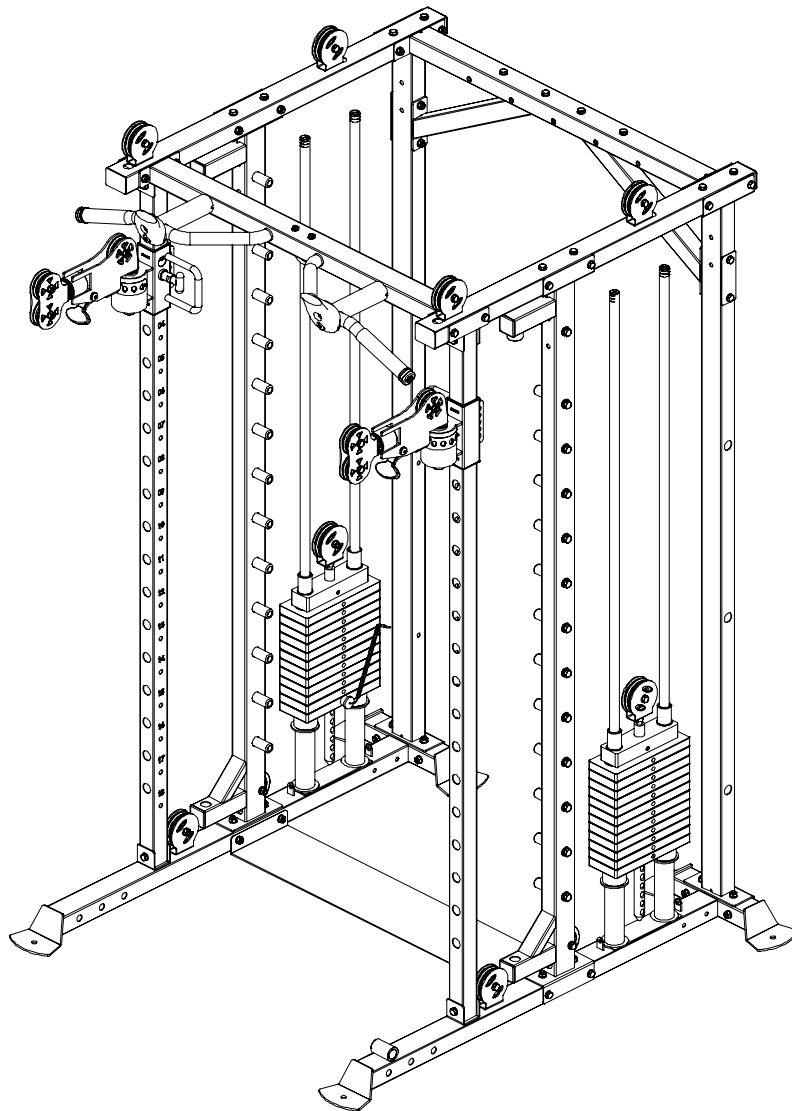
1. Install Sliding component left(21) and Sliding component right(22) into front stand tube(20).
2. Install the front stand tube (20) on the main machine with M10*75 hexagon bolt(24), washer (9) and lock nut(10).
3. Install the chin up bar (19) on the main machine with M10*95 hexagon bolt(11), ϕ 10 washer (9),M10 lock nut (10), 140X50 connector piece(18).

Assembly step (4) explosion drawing



No.	Description	Note	Qty.
26	selector rod	$\phi 25$	2
27	weight stack 90kg	90kg	2
28	spring pin	10×60	2
29	crash pad	$\phi 60 \times \phi 27 \times 42$	4
30	pulley frame		2
81	Magnetic latch	$\phi 10 \times 100$	2

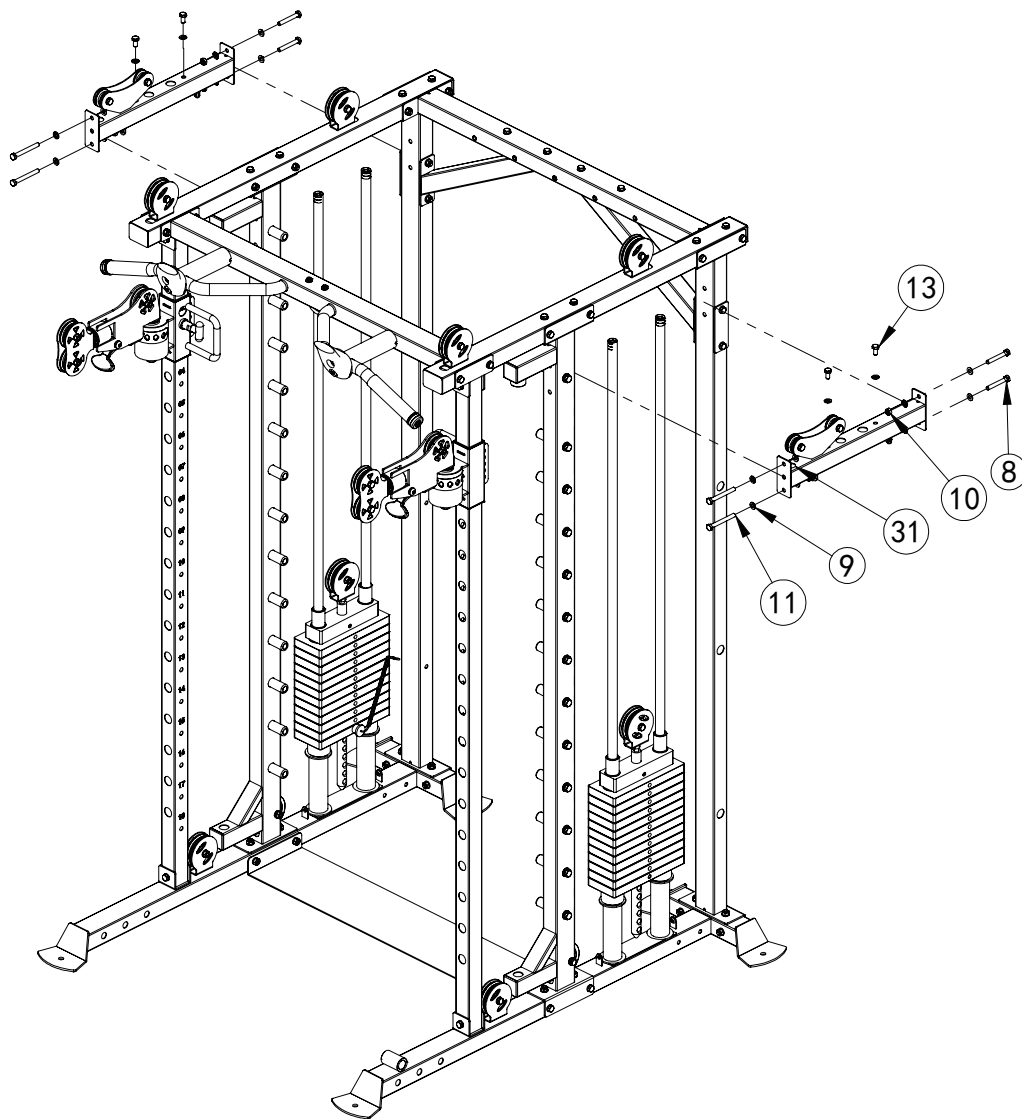
Assembly step (4) drawing



Assembly step (4) assembly instruction

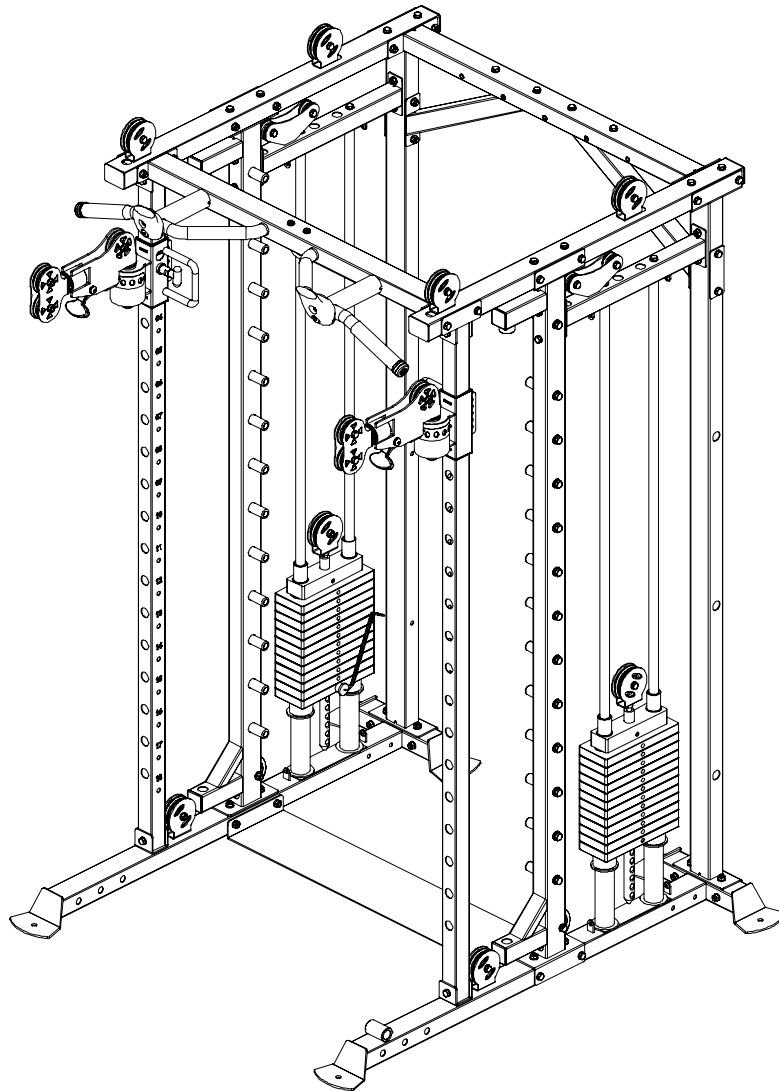
1. Insert 60-27 cushion (29) into guide rod (12).
2. Put the weight stack 90kg (27) in descending order according to the weight mark, and put selector rod (26) of spring pin (28).
3. Install pulley frame(30) on selector rod (26).

Assembly step (5) explosion drawing



No.	Description	Note	Qty.
8	hexagon bolt	M10×70	4
9	washer	φ10	20
10	lock nut	M10	8
80	hexagon bolt	M10×85	4
13	hexagon bolt	M10×20	4
31	Guide rod fixed pipe		2

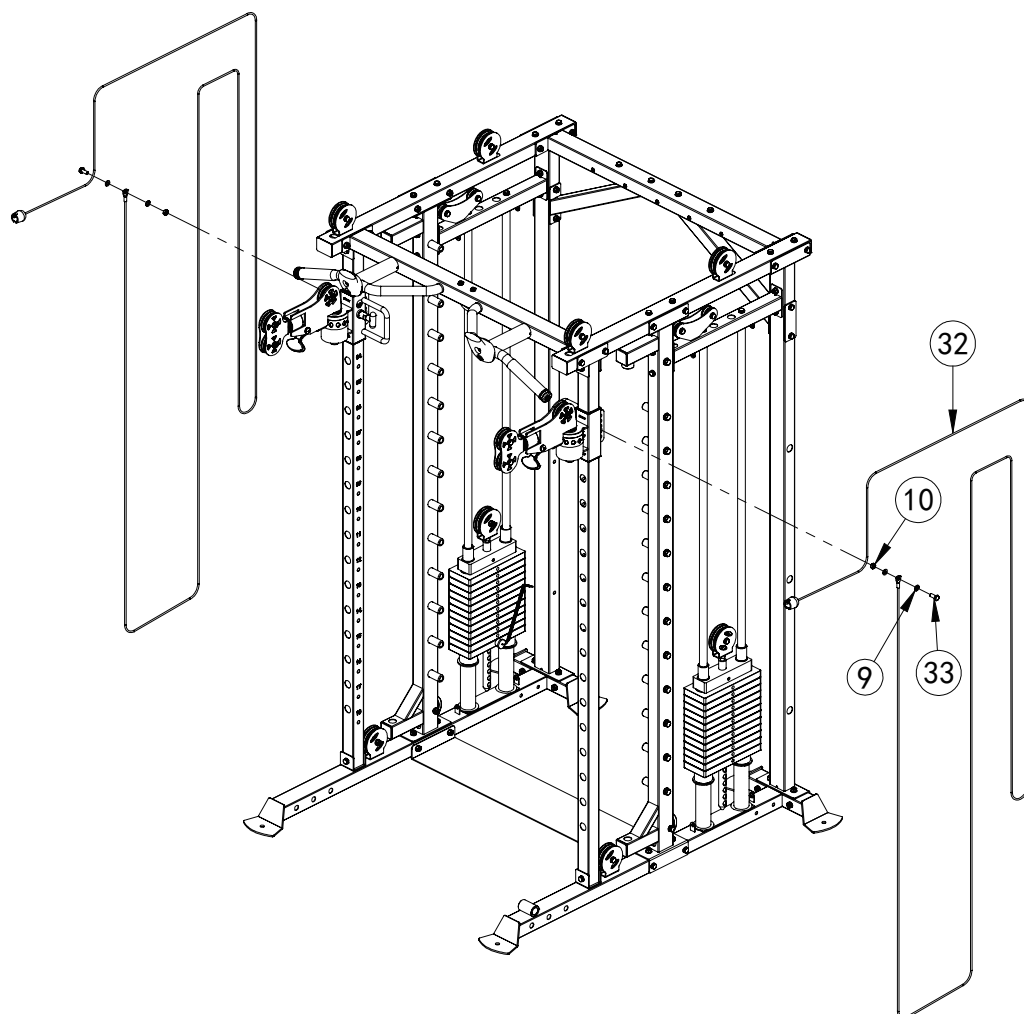
Assembly step (5) drawing



Assembly step (5) assembly Instruction

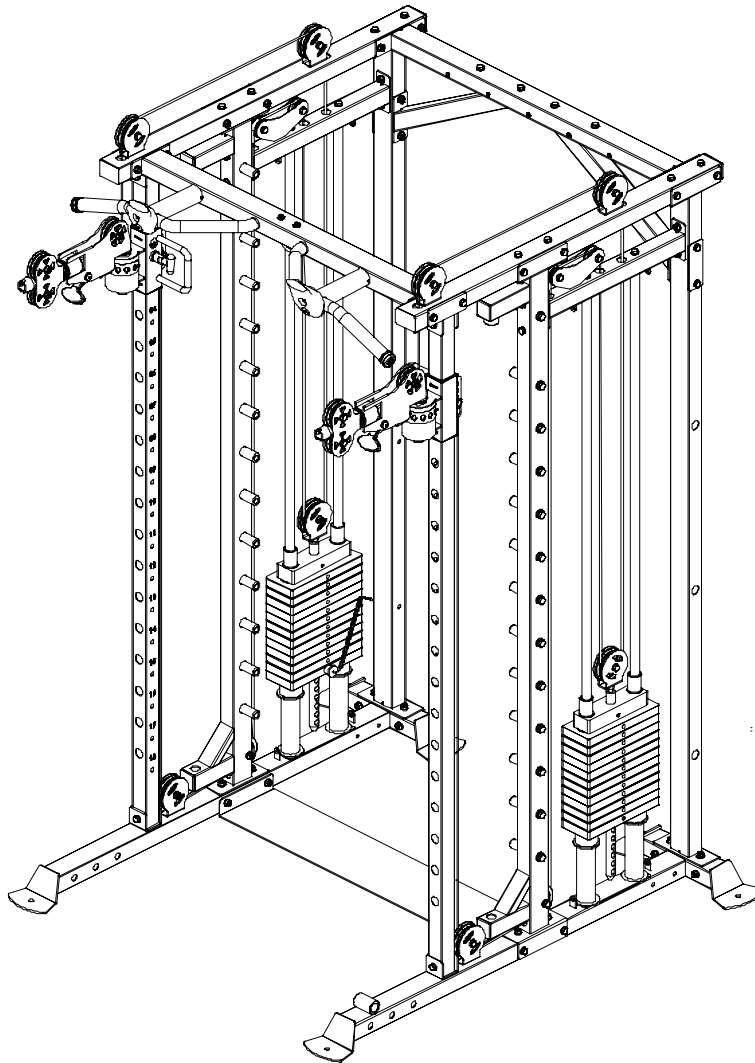
1. Use M10×70 hexagon bolt(8), M10*85 hexagon bolt(80), washer (9), lock nut (10) to assemble the guide rod fixed pipe (31) and fix it on the main machine.
2. Lock the guide rod (12) with M10*20 hexagon bolt(13) and $\phi 10$ washer (9).

Assembly step (6) explosion drawing



No.	Description	Note	Qty.
9	washer	ϕ 10	4
10	lock nut	M10	2
32	Steel wire rope	Bulbous ϕ 5 * 1	2
33	M10*25 hexagon bolt	M10*25	2

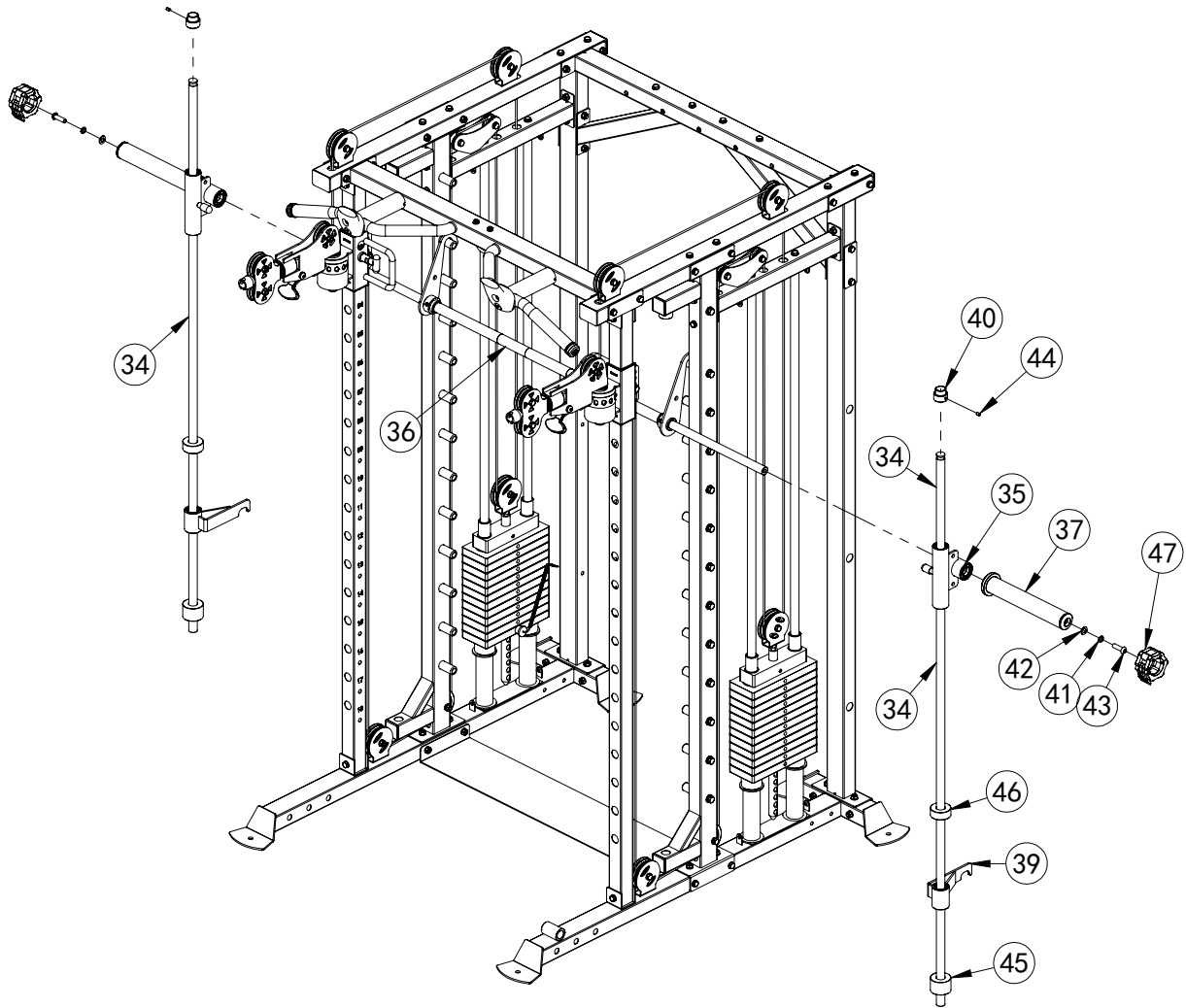
Assembly step (6) drawing



Assembly step (6) assembly instruction

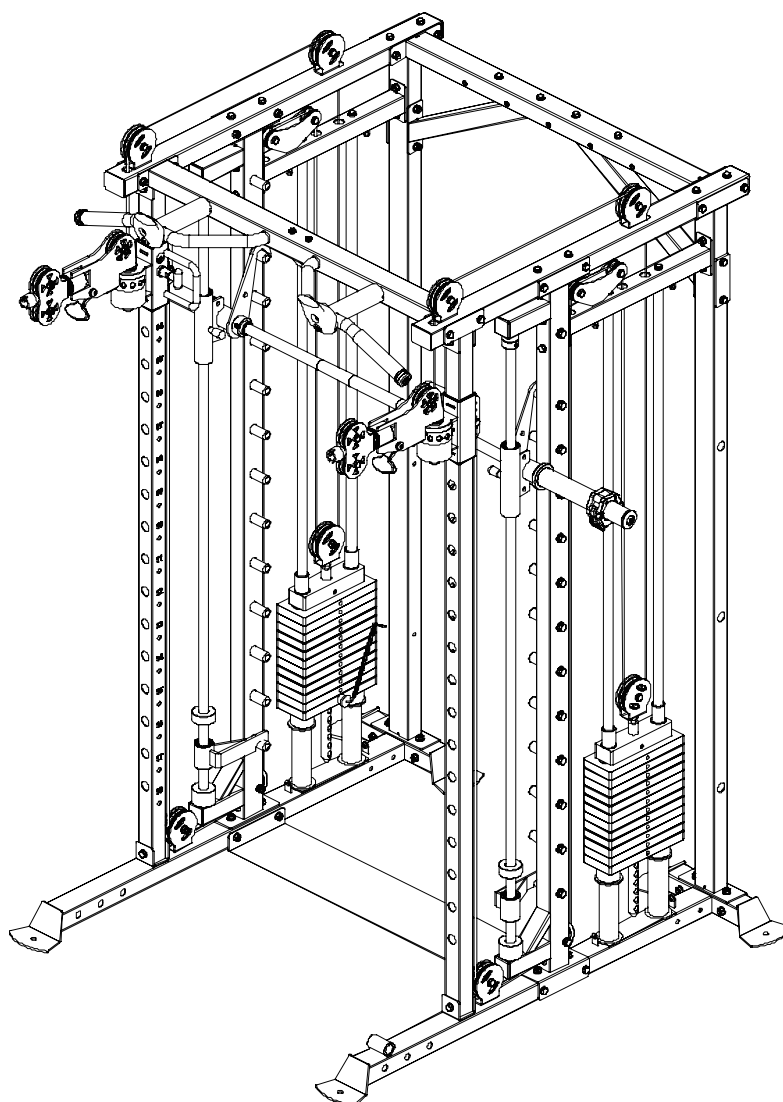
1, as shown in the Steel wire rope (32), with M10*25 hexagon bolt (33), washer(9), lock nut (10) fixed the wire rope end on the fly sliding sleeve.

Assembly step (7) explosion drawing



No.	Description	Note	Qty.
34	long guide rod	$\Phi 25 * 1850$	2
35	The sliding sleeve welding		2
36	Barbell rod		1
37	Barbell rod sleeve		2
38	Safety hook right		1
39	Safety hook left		1
40	Guide rod locking sleeve	$\Phi 40 * \Phi 25.5 * 35$	2
41	Spring washer	$\Phi 12$	2
42	flat washer	$\Phi 12$	2
43	hexagon bolt	M12x40	2
44	Hexagon bolt without head	M8x10	2
45	60-27 cushioning	$\Phi 60 * \Phi 27 * 42$	2
46	60-26 cushion	$\Phi 60 * \Phi 26 * 25$	2
47	Barbell card	$\Phi 85 * \Phi 50 * H49$	2

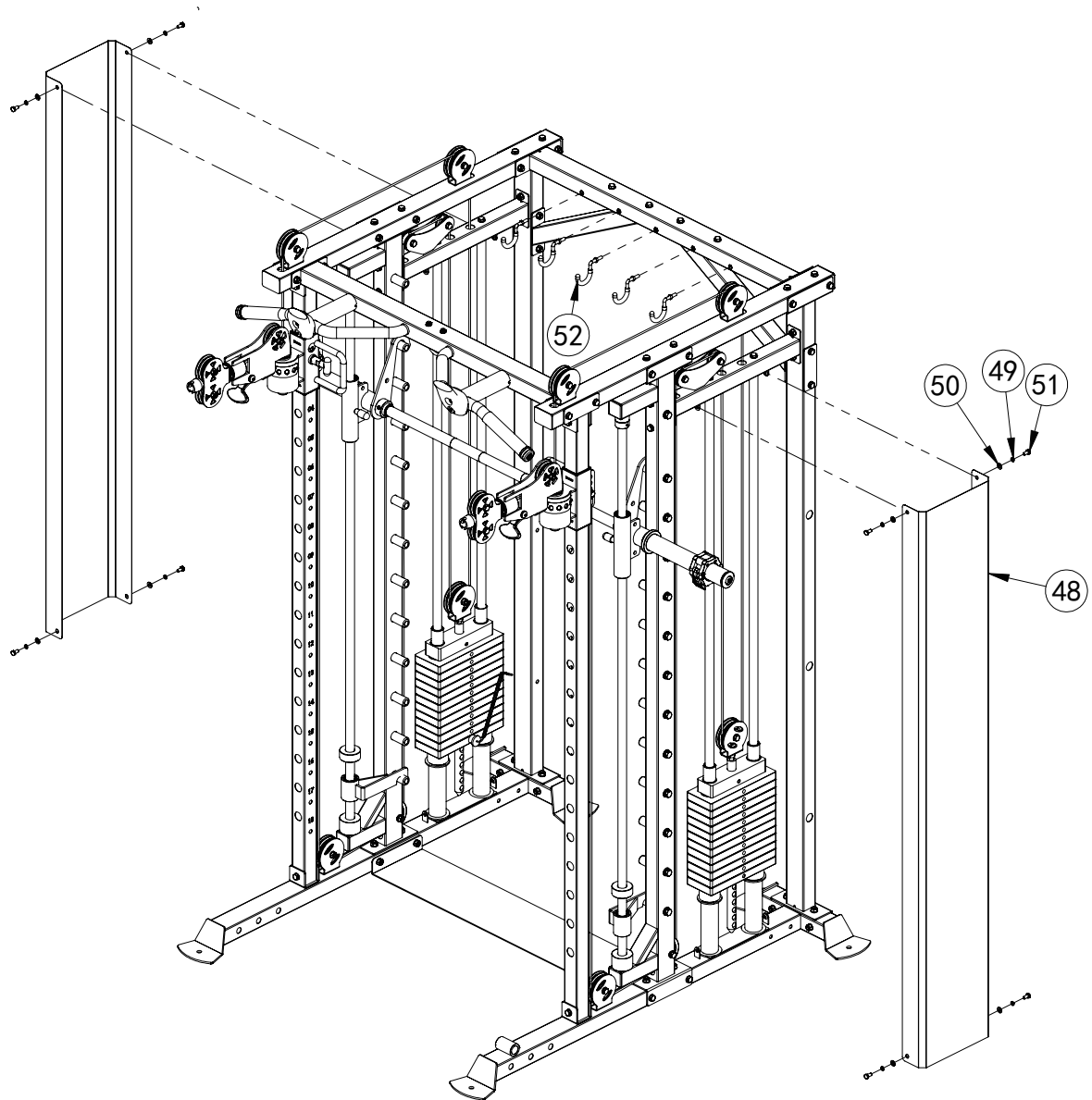
Assembly step (7) drawing



Assembly step (7) assembly instruction

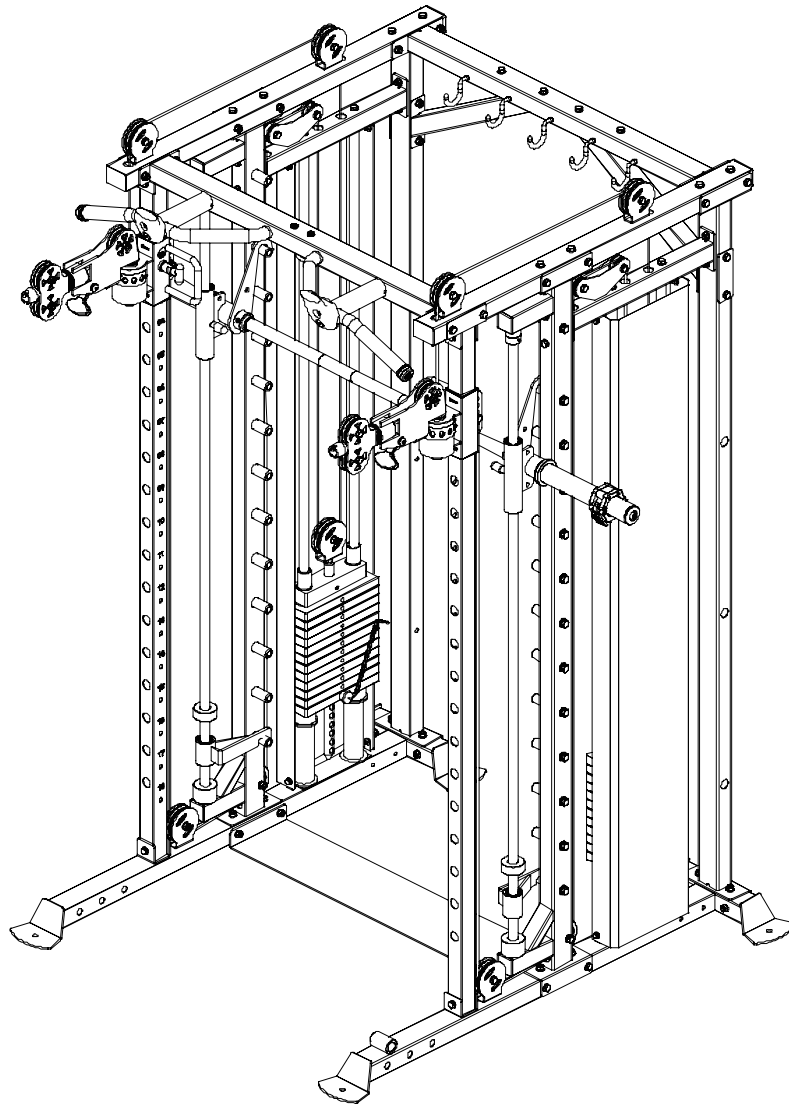
1. Hang the barbell rod (36) on the main machine, hold it by one person, adjust the Angle and wait for installation.
2. long guide rod (34) installed 60-27 cushioning (45), Safety hook left (39), 60-26 cushion (46), The sliding sleeve welding (35), Guide rod locking sleeve (40); Then insert the sliding sleeve welding assembly (35) on the long guide rod (34) and the barbell rod (36) together, and insert the long guide rod (34) on the left frame; Finally, fasten the Guide rod locking sleeve (40) at the top of the long guide rod (34) with the M8*10 Hexagon bolt without head (44).
3. use M12*40 hexagon bolt (43) with ϕ 12 flat washer (42), ϕ 12 spring gasket (41) to install the barbell rod sleeve (37) on the barbell rod (36).
4. Install the barbell card (47) on the barbell rod sleeve (37).

Assembly step (8) explosion drawing



No.	Description	Note	Qty.
48	Shield	T1	2
49	spring washer	Φ8	8
50	flat washer	Φ8	8
51	hexagon bolt	M8X16	8
52	Short hook assembly		5

Assembly step (8) drawing

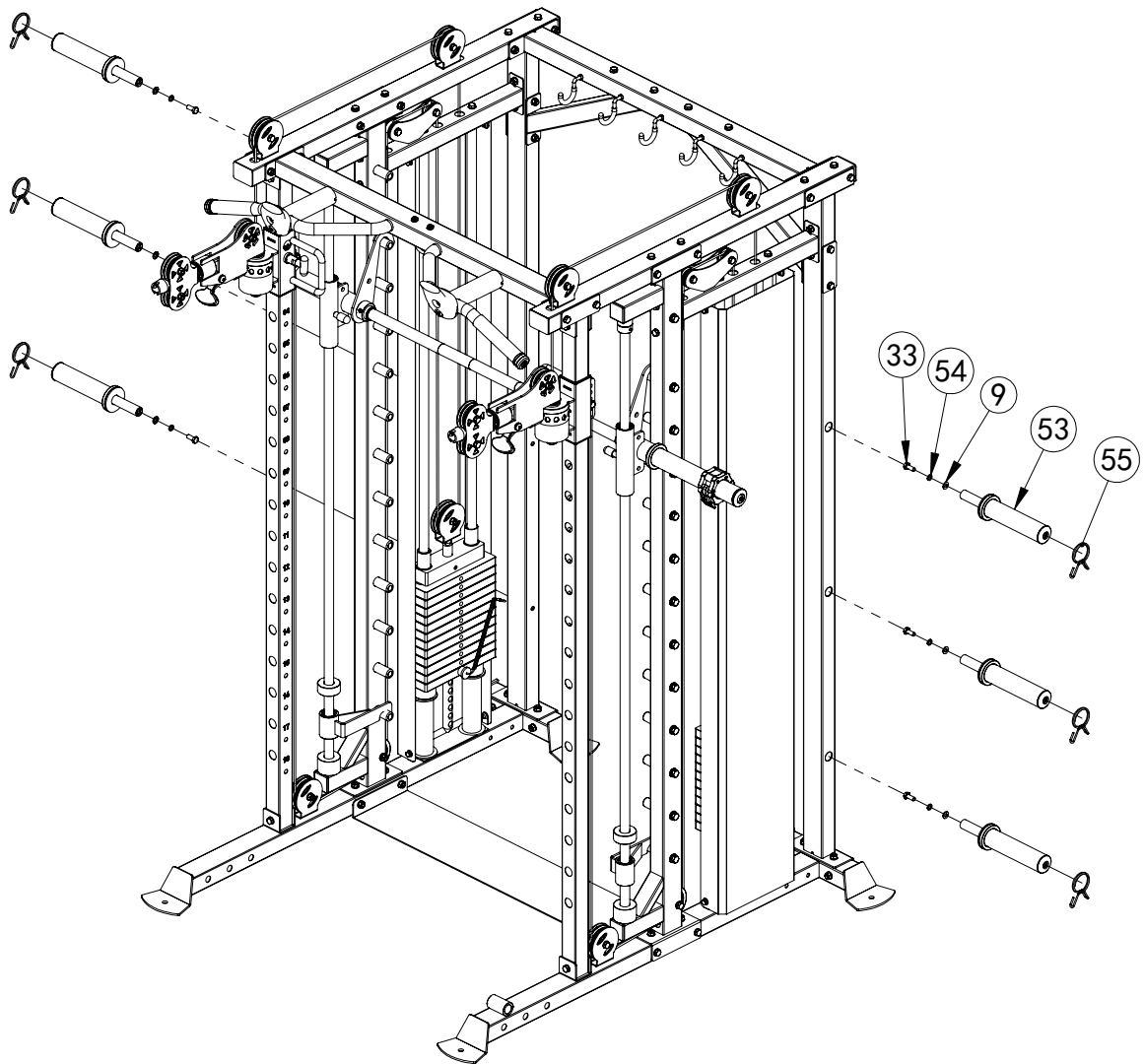


Assembly step(8) assembly Instruction

1, use M8*16 hexagon bolt (51), ϕ 8 flat washer (50), ϕ 8 spring washer(49) to fix the shield(48) on the main machine.

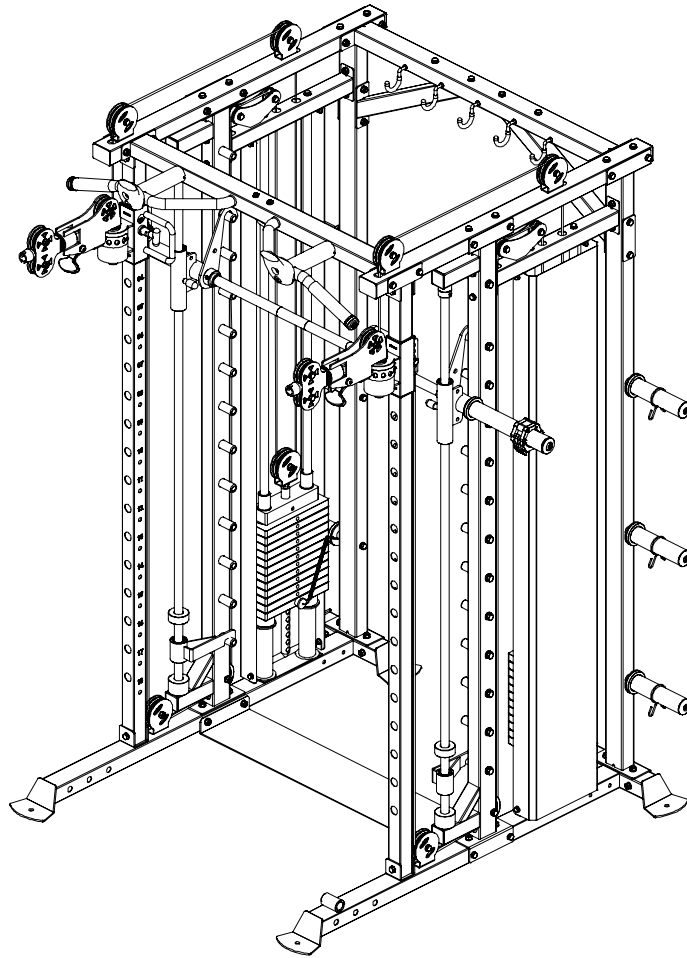
2. Install the short hook assembly (52) on the main machine .

Assembly step (9) explosion drawing



No.	Description	Note	Qty.
9	washer	$\phi 10$	6
33	hexagon bolt	M10×25	6
53	Barbell hanging rod		6
54	spring gasket	$\phi 10$	6
55	The butterfly clip	$\phi 50$	6

Assembly step (9) drawing

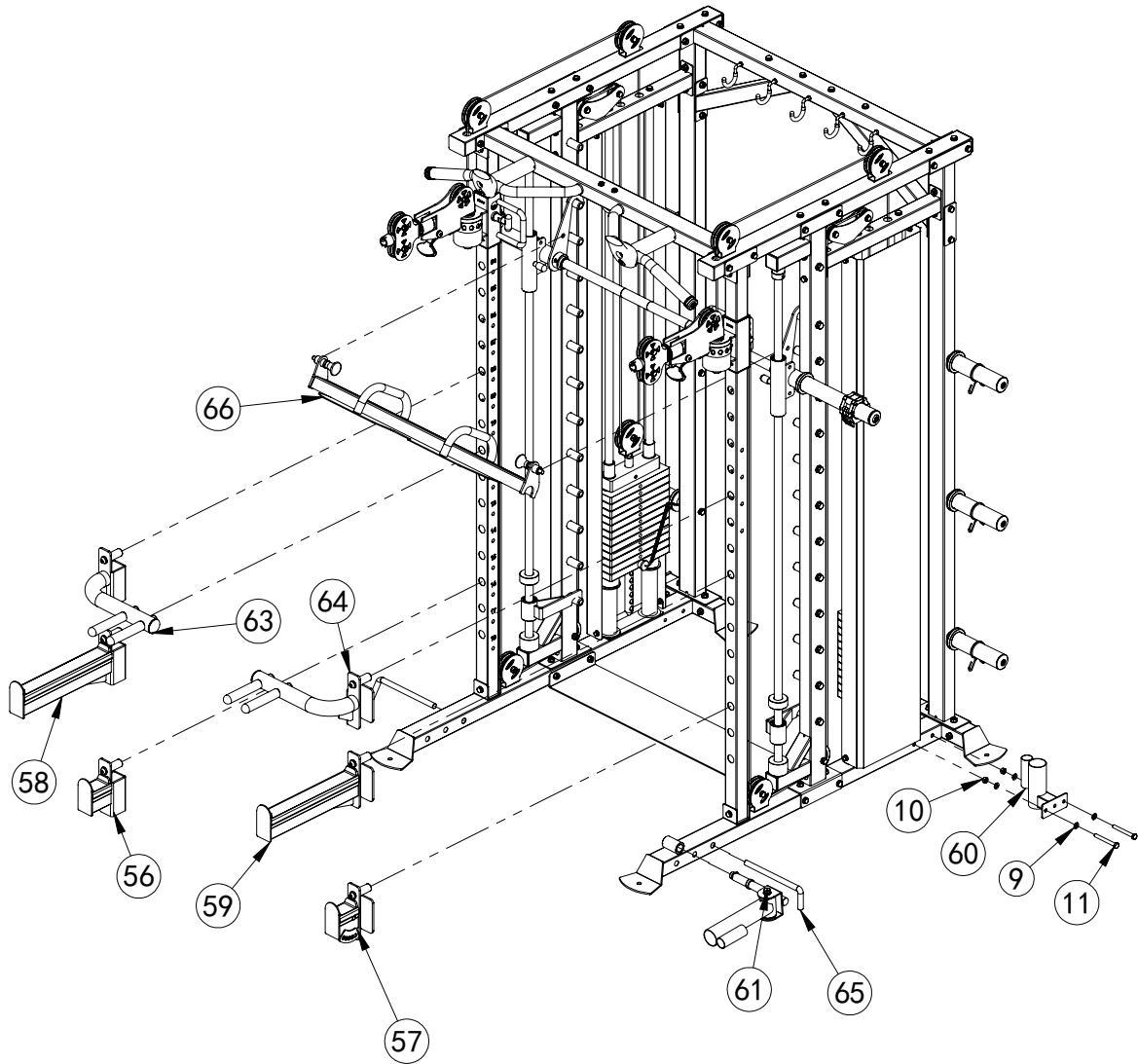


Assembly step (9) assembly instruction

1, use M10*25 hexagon bolt (33), ϕ 10 washer (9), ϕ 10 spring gasket (54) to install the barbell hanging rod (53) on the main machine.

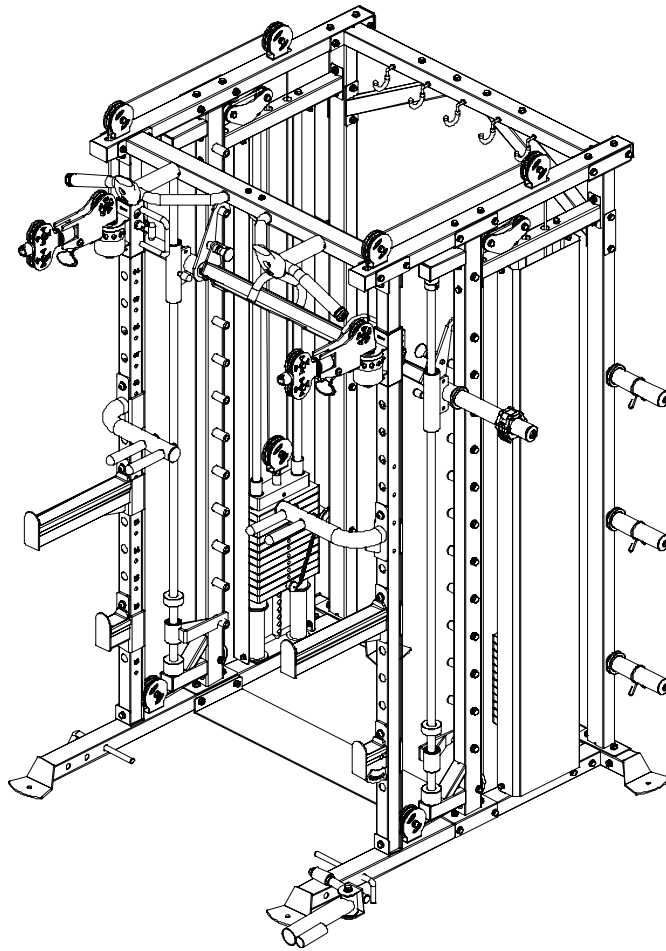
2, install the the butterfly clip (55) on the barbell hanging rod (53).

Assembly step (10) explosion drawing



No.	Description	Note	Qty.
56	Safety short - right assembly		1
57	Safety short - left assembly		1
58	Long right safety gear		1
59	Long left safety gear		1
60	Barbell rod sleeve welding		1
61	Turn rod assembly		1
63	dip bar right		1
64	dip bar left		1
65	Fix elastic rope L pin	$\phi 17 \times 250 \times 77L$	2
11	hexagon bolt	M10×90	2
9	washer	$\phi 10$	4
10	lock nut	M10	2
66	footplate		1

Assembly step(10) drawing

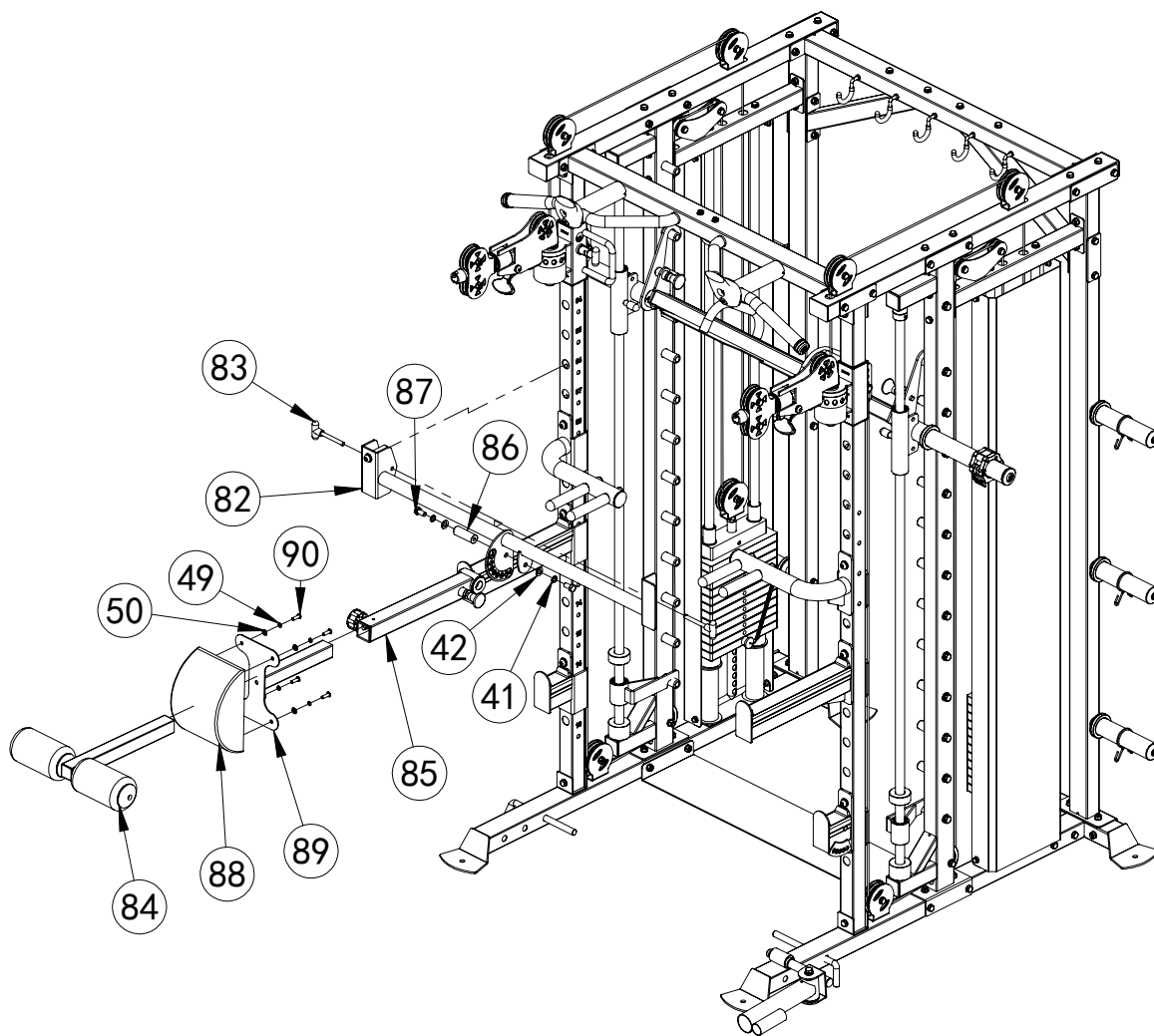


Assembly step(10) assembly instruction

1, use M10*90 hexagon bolt(11), ϕ 10 washer (9), M10 lock nut (10) to install the barbell rod sleeve welding (60) on the main machine.

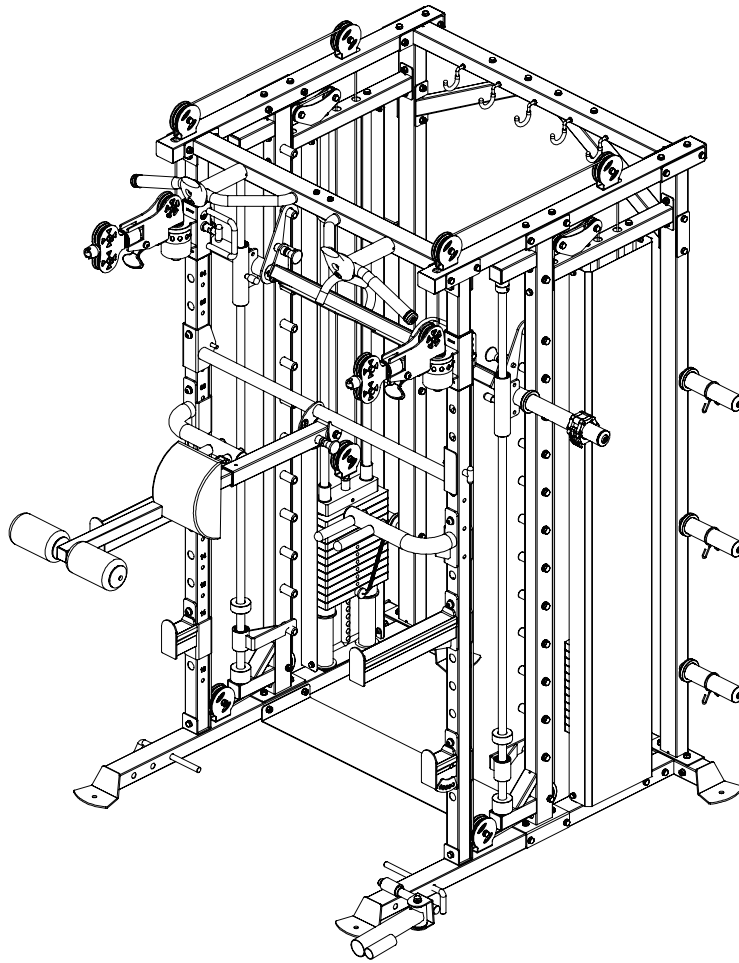
2. As shown in the figure, safety short - right assembly (56), safety short - left assembly(57), long right safety gear (58), Long left safety gear (59), turn rod assembly(61), dip bar right (63), dip bar left(64),fix elastic rope L pin (65) footplate (66) is installed on the main machine.

Assembly step (11) explosion drawing



No.	Description	Note	Qty.
82	The top waist assembly		1
83	85T-bolt - Black	$\phi 10 \times 85$	2
84	Leg press adjustment assembly		1
85	Top waist supervisor assembly		1
86	inner shaft	$\phi 25 \times 70 - M12$	1
87	hexagon bolt	M12 \times 25	2
41	spring washer	$\phi 12$	2
42	flat washer	$\phi 12$	2
88	Top of the back pad		1
89	Top waist telescopic weldment		1
90	Hexagon bolt	M8 \times 25	4
49	spring washer	$\phi 8$	4
50	Flat washer	$\phi 8$	4

Assembly step(11) drawing



Assembly step(11) assembly Instruction

1. Install the top waist assembly (82) on the main machine with 85T-bolt - Black(83).
2. Use M12*25 hexagon bolt (87), spring washer (41), $\phi 12$ flat washer(42), $\phi 25*70$ -M12 inner shaft(86) to top waist supervisor assembly (85) on the top waist assembly(82).
3. Top of the back pad(88) with M8*25 hexagon bolt (90), $\phi 8$ spring washer (49), $\phi 8$ flat washer (50) Connected with top waist telescopic weldment (89).
4. Install leg adjustment assembly (84) Pedal adjustment tube(91)or Top waist telescopic weldment (89) in Top waist supervisor assembly (85).

Accessories list

