

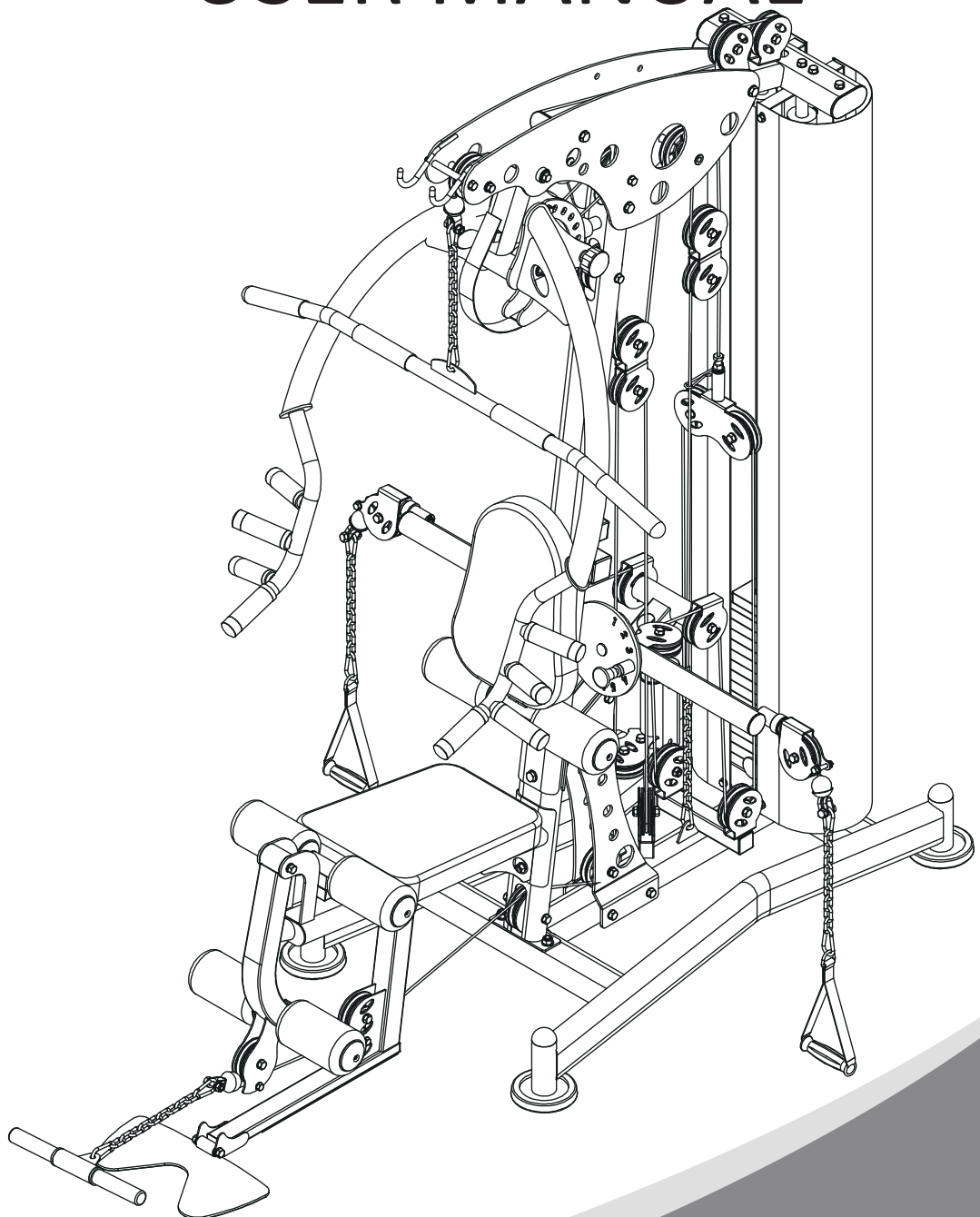


HIT FITNESS

HIT00734

HIT FITNESS PEGASUS 2.0 MULTI GYM

USER MANUAL



Contents

spare part list.....	3-7
Assembly step 1.....	8-10
Assembly step 2.....	11-12
Assembly step 3.....	13-15
Assembly step 4.....	16-18
Assembly step 5.....	19-21
Assembly step 6.....	22-24
Assembly step 7.....	25-27
Assembly step 8.....	28-30
Assembly step 9.....	31-33
Assembly step 10.....	34-35
Assembly step 11.....	36-38
Assembly step 12.....	39-40
Assembly step 13.....	41-44
Assembly step 14.....	45-47
Assembly step 15.....	48-49
Assembly step 16.....	50-51
Assembly step 17.....	52-54

Parts List

No.	Description	Note	Qty.
1	ground frame		1
2	guide rod	Φ25*1853	2
3	back support tube	Φ25*1757.5	2
4	hexagon bolt	M10*65	8
5	gasket	Φ10	84
6	hexagon bolt	M10*20	8
7	spring gasket	Φ10	14
8	rubber cushion	Φ60*Φ26*42	2
9	rubber cushion	Φ60*Φ26*20	2
10	allen bolt	M8*70	2
11	lock nut	M8	6
12	selector rod	92KG	1
13	weight plate	6KG	14
14	top weight plate	8KG	1
15	gasket	Φ8	26
16	magnetic pin	Φ10*100	1
17	locking spring knob	Φ40	2
18	locking spring knob	M18*1.5*Φ10	2
19	hexagon bolt	M12*70	4
20	gasket	Φ12	23
21	lock nut	M12	11
22	upright frame		1
23	lock nut	M10	34
24	shield support frame		1
25	upper frame		1
26	hexagon bolt	M12*130	3
27	right cover		1
28	left cover		1
29	hexagon bolt	M12*75	4

Parts List

No.	Description	Note	Qty.
30	hexagon bolt	M10*25	2
31	shaft	Φ17*57	1
32	seat pad adjuster tube		1
33	seat pad tube		1
34	leg curl tube		1
35	big gasket	Φ25*10*2.0	6
36	hexagon bolt	M8*16	9
37	locking spring knob	Φ12	1
38	shaft	Φ17*134	1
39	shaft	Φ17*100	1
40	front push holder		1
41	guard plate		1
42	front push arm		1
43	hexagon bolt	M10*70	1
44	allen bolt	M10*16	2
45	butterfly arm right		1
46	butterfly arm left		1
47	pulley support frame		1
48	reinforcing plate		1
49	footplate		1
50	hexagon bolt	M10*130	6
51	hexagon bolt	M10*115	2
52	hexagon bolt	M10*45	19
53	allen bolt	M10*45	1
54	pulley frame		2
55	pulley	Φ95*26	29
56	connection sleeve	Φ14*100	1
57	pulley spacer	Φ22*Φ10.5*45.5	4
58	cable	L=4490mm	1

Parts List

No.	Description	Note	Qty.
59	cable hook		1
60	9 section chain + snap hook		5
61	double pulley frame		1
62	cable	L=1500mm	1
63	hexagon bolt	M8*45	6
64	cable	L=5375mm	1
65	hexagon bolt	M10*75	2
66	hexagon bolt	M10*85	1
67	powder metallurgy sleeve	Φ10	2
68	left support plate		1
69	right support plate		1
70	cable	L=4225mm	1
71	short bar		1
72	spring gasket	Φ8	12
73	hexagon bolt	M8*40	2
74	back pad adjuster frame		1
75	back pad		1
76	seat pad		1
77	allen bolt	M8*25	6
78	foam outer cover		6
79	foam inner cover		6
80	foam	Φ100*75	6
81	foam rod	Φ25*480	1
82	foam rod	Φ25*450	1
83	weight plate cover		2
84	long bar		1
85	handle belt		2
89	foot cover	Φ120	4
90	tube plug	Φ50	4

Parts List

No.	Description	Note	Qty.
91	tube plug	□40*40	3
92	tube plug	50-100	5
93	ring	Φ39*Φ33*25	8
94	handle cover	Φ32*95	8
95	ring	Φ39*Φ33*9.6	8
96	screw	M5*5	16
97	reducing sleeve	□50-40L	2
98	rubber cushion	Φ45*Φ34*40	1
99	allen bolt	M8*16	1
100	tube plug	□25*50	6
101	rubber sheet	387*45*6	1
102	screw	M4*12	6
103	tube plug	Φ32*Φ26*25	4
104	rubber cushion	Φ40*Φ25.5*29	1
105	tube plug	□50-50*2.0	1
106	rubber cushion	Φ60*Φ25*42	1
107	tube plug	Φ25	1
108	handle cover	Φ32*180,one end open	2
109	handle cover	Φ32*150,both ends open	2
110	handle cover	Φ25*130, one end open	2
111	tube plug	Φ35*Φ27*25	2
112	hexagon bolt	M10*16	2
113	bearing	6003	4
114	pulley spacer sleeve	Φ22*Φ10.5*13.5	4
115	selector plate		1
116	cover	Φ8,one end open	2
117	pulley plate		2
118	tube plug	Φ48	2
119	bearing	51104	2

Parts List

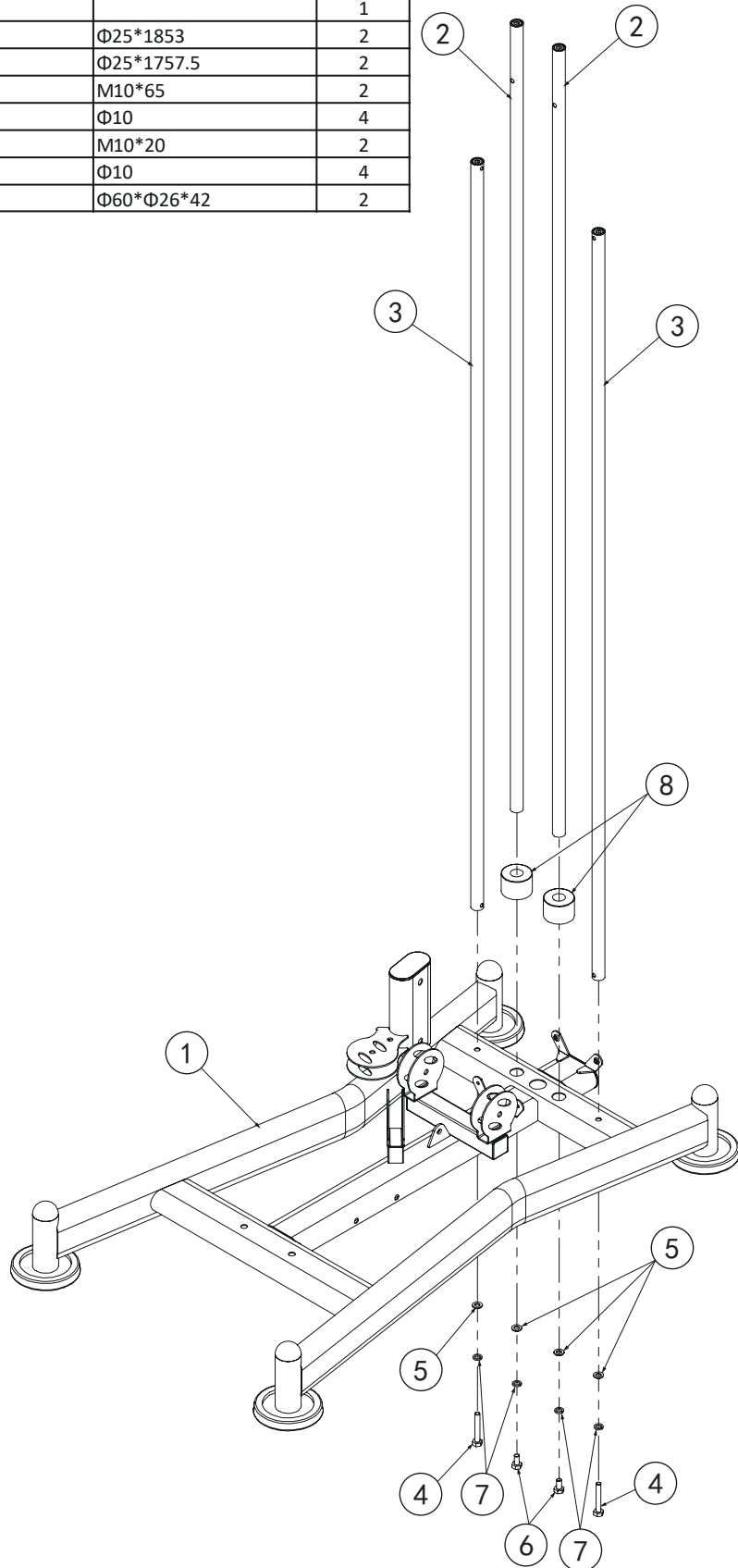
No.	Description	Note	Qty.
120	ring	Φ20	2
121	powder metallurgy sleeve	Φ32*Φ20*18	4
122	footplate rubber sheet		1
123	bearing	6203	2
124	figures plate-R		1
125	figures plate-L		1
126	inner thread lock screw	M4*5	4
127	outer thread lock screw	Φ5*8-M4	4
128	double layer nut	Φ29.3-M10 two layer	8
129	cross recessed countersunk head	M10*25	8
150	hexagon bolt	M8*25	1
162	hexagon bolt	M10*40	2

Bolt Length Measure



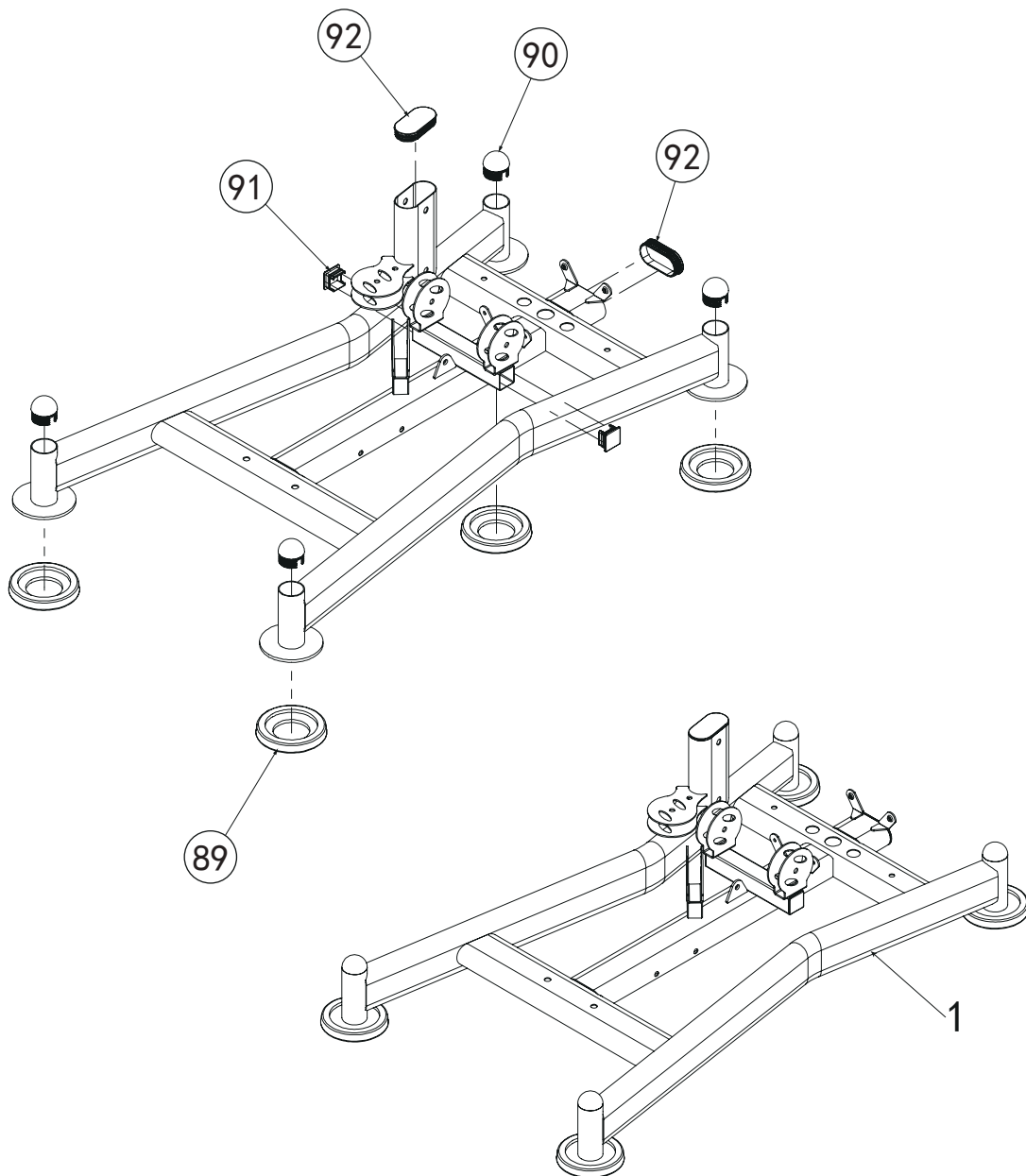
Assembly step (1) explosion drawing

No.	Description	Note	Qty.
1	ground frame		1
2	guide rod	Φ25*1853	2
3	back support tube	Φ25*1757.5	2
4	hexagon bolt	M10*65	2
5	gasket	Φ10	4
6	hexagon bolt	M10*20	2
7	spring gasket	Φ10	4
8	rubber cushion	Φ60*Φ26*42	2

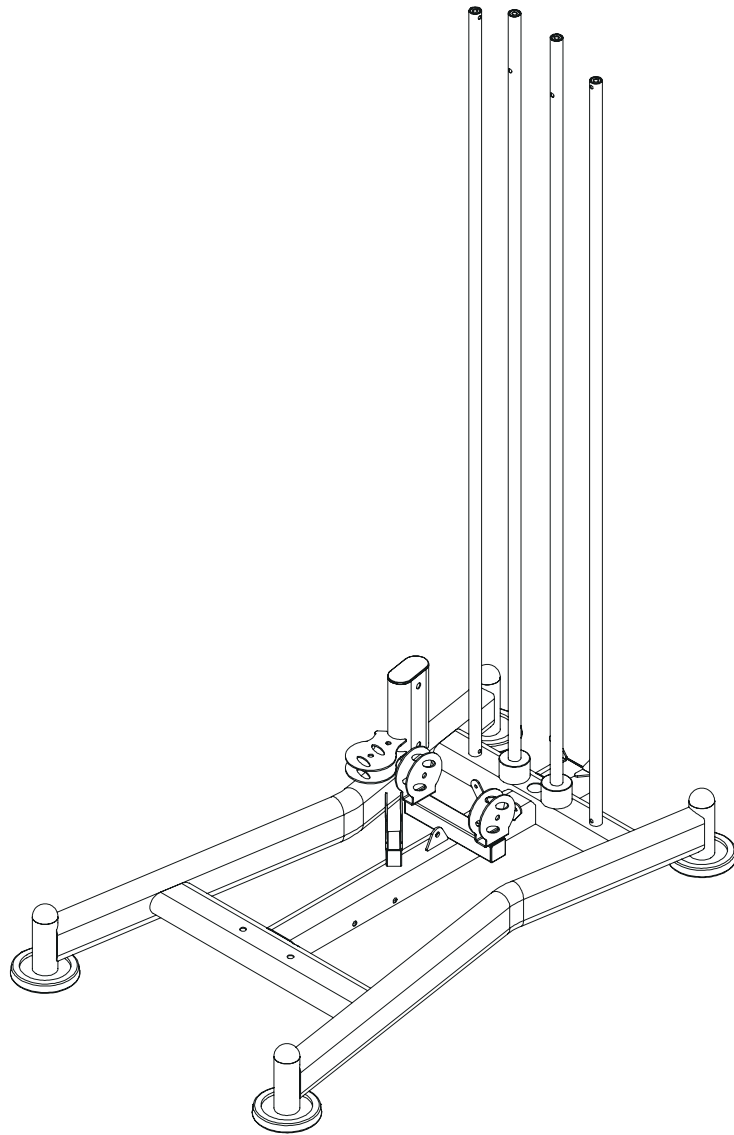


Factory Assembly Drawing

No.	Description	Note	Qty.
89	foot cover	Φ120	4
90	tube plug	Φ50	4
91	tube plug	□40*40	2
92	tube plug	50-100	2



Assembly step (1) drawing



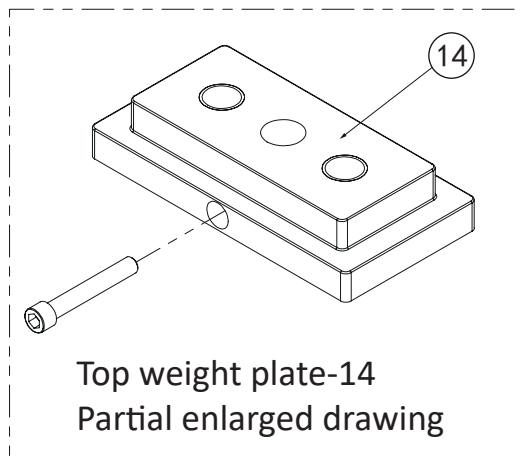
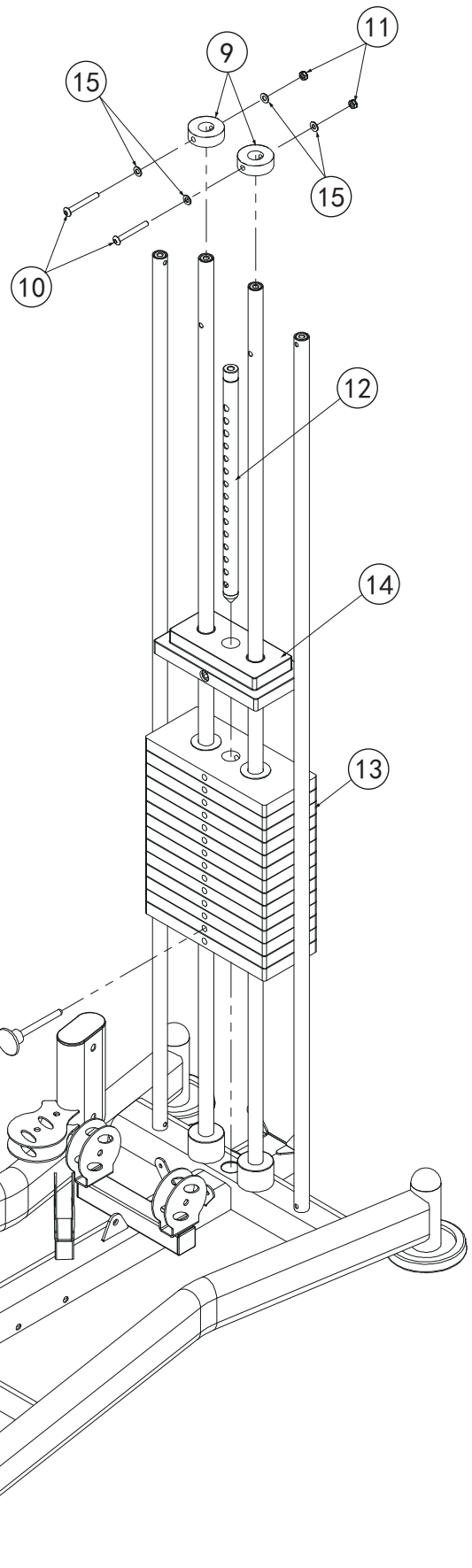
Assembly step (1) assembly instruction

- 1 Fix guide rod-3 on ground frame-1 using M10*65 hexagon bolt-4, Φ 10 spring gasket-7, Φ 10 gasket-5.
- 2 Fix guide rod/silver-2 on ground frame-1 using M10*20 hexagon bolt-6, Φ 10 spring gasket-7, Φ 10 gasket-5.
- 3 Put rubber cushion-8 on the guide rod -2.

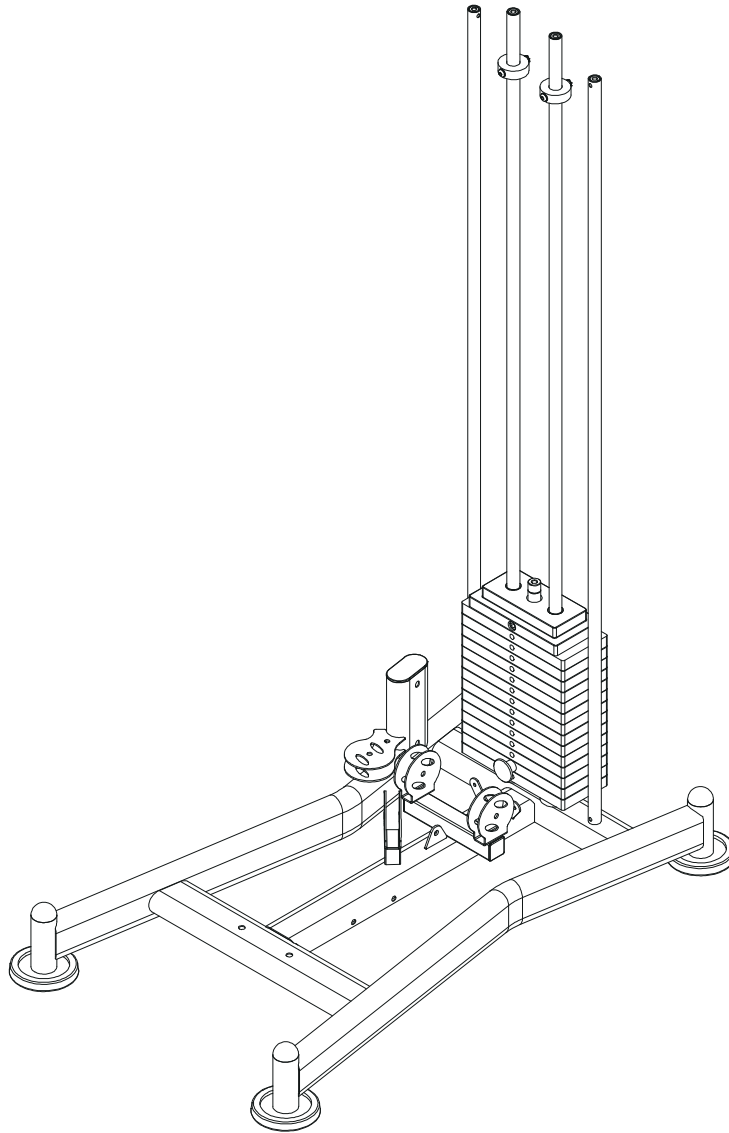
CAUTION: All bolts should be tightening.

Assembly step (2) explosion drawing

No.	Description	Note	Qty.
9	rubber cushion	$\Phi 60 \times \Phi 26 \times 20$	2
10	allen bolt	M8*70	2
11	lock nut	M8	2
12	selector rod	92KG	1
13	weight plate	6KG	14
14	top weight plate	8KG	1
15	gasket	$\Phi 8$	4
16	magnetic pin	$\Phi 10 \times 100$	1



Assembly step (2) drawing



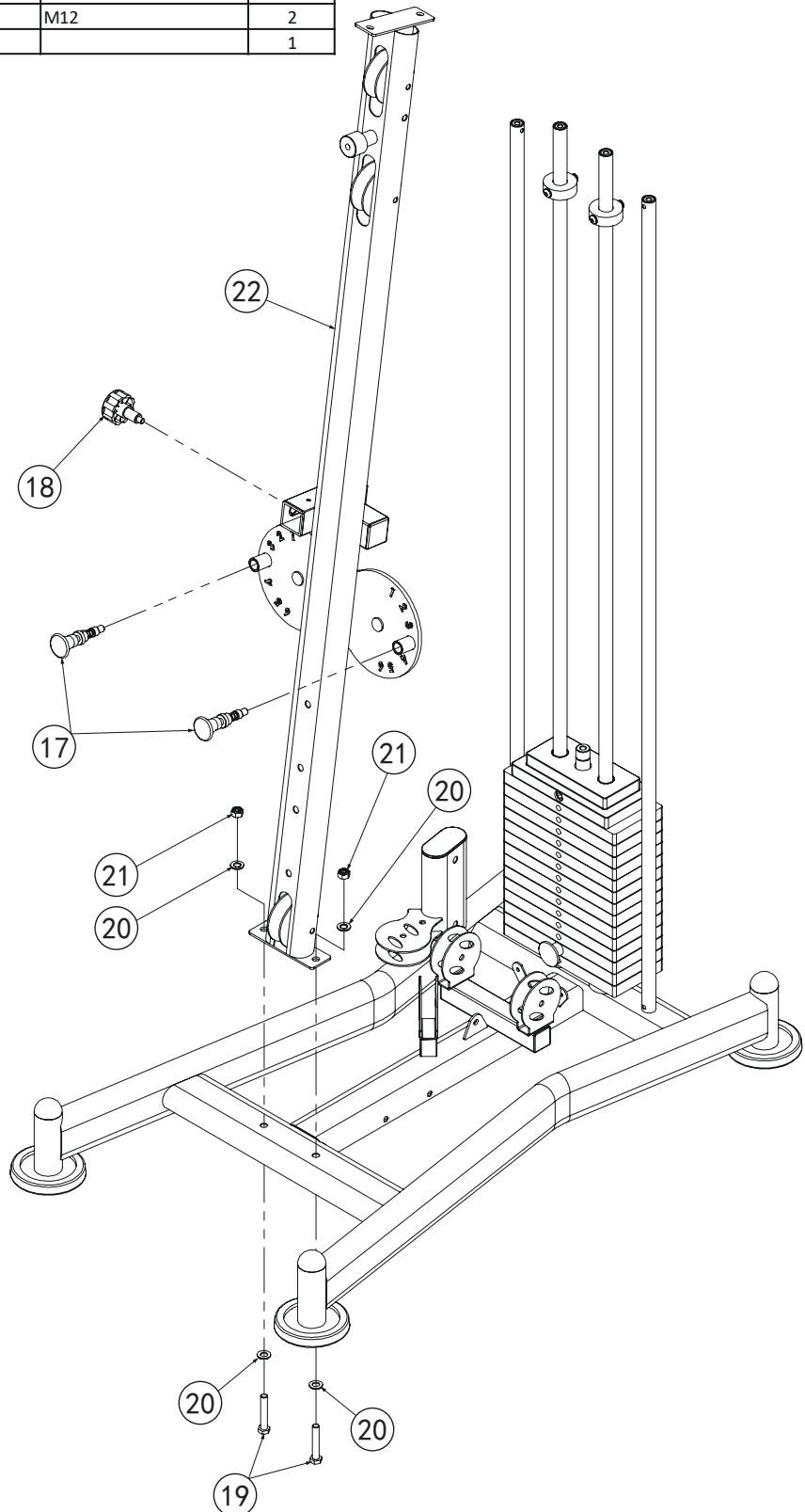
Assembly step (2) assembly instruction

- 1 From guide rod top in turn put 14 cps. weight plate-13, top weight plate-14, NO.13 note that the largest weight is placed at the bottom and the smallest at the top.
- 2 Take off the top weight plate-14,put selector rod-12,weight plate-13,top weight plate-14 together ,finally install the bolt back to top weight plate-14.
- 3 Plug magnetic pin-16 on weight plate-13 and selector rod-12.
- 4 Fix rubber cushion-9 on guide rod using M8*70 allen bolt-10, $\Phi 8$ gasket-15,M8 lock nut-11.

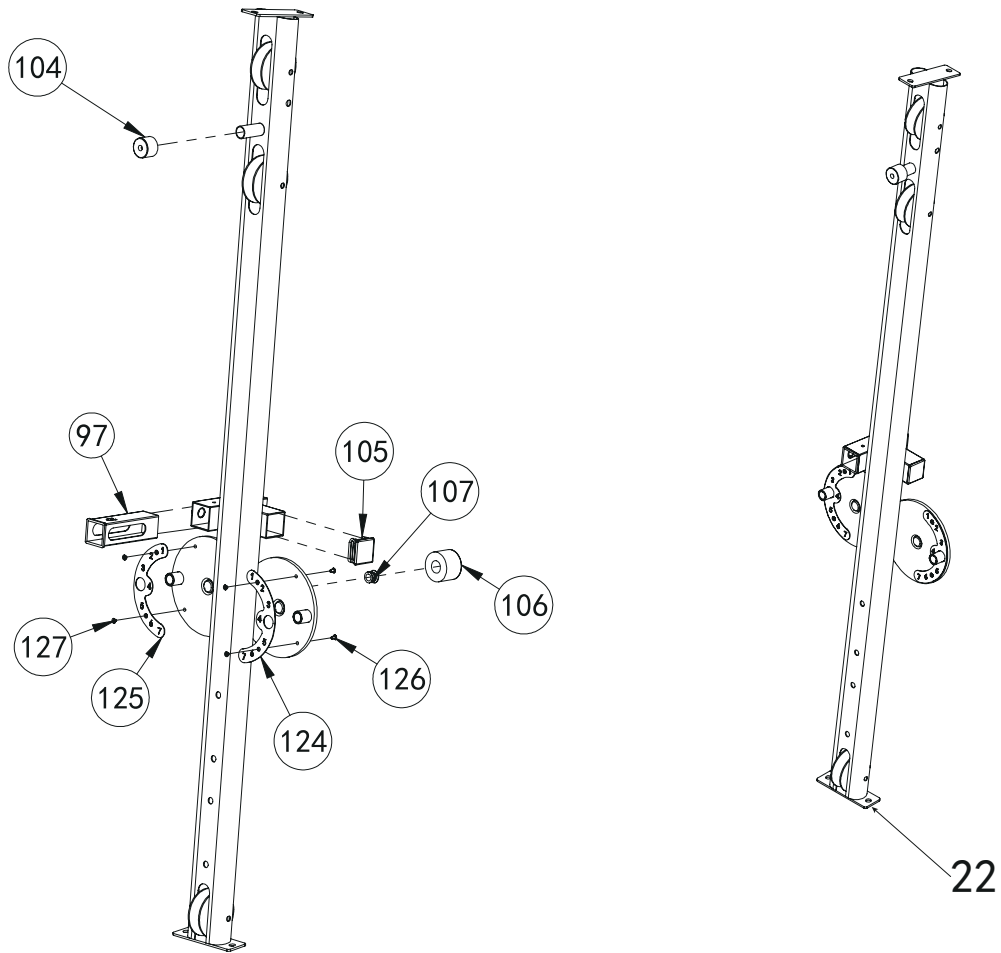
CAUTION: Allen bolts should be tightening

Assembly step (3) explosion drawing

No.	Description	Note	Qty.
17	locking spring knob	Φ40	2
18	locking spring knob	M18*1.5*Φ10	1
19	hexagon bolt	M12*70	2
20	gasket	Φ12	4
21	lock nut	M12	2
22	upright frame		1

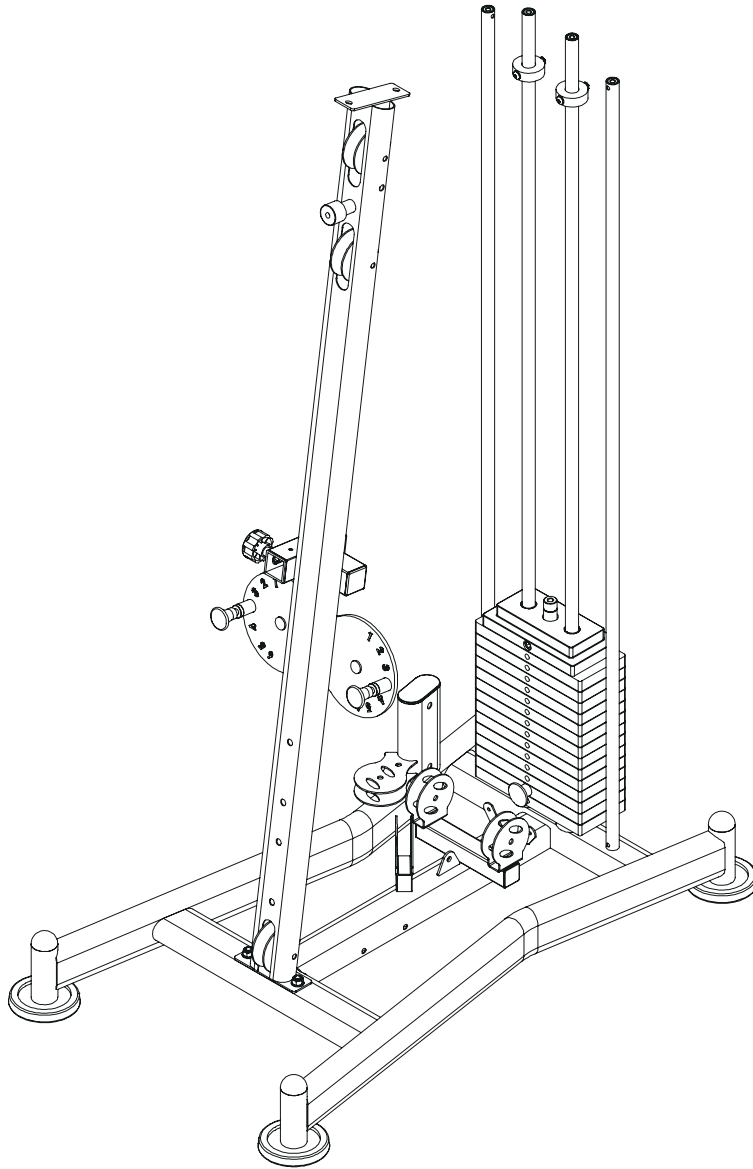


Factory Assembly Drawing



No.	Description	Note	Qty.
104	rubber cushion	$\Phi 40 * \Phi 25.5 * 29$	1
105	tube plug	$\square 50-50 * 2.0$	1
97	reducing sleeve	$\square 50-40L$	1
107	tube plug	$\Phi 25$	1
124	figures plate-R		1
125	figures plate-L		1
106	rubber cushion	$\Phi 60 * \Phi 25 * 42$	1
126	inner thread lock screw	M4*5	4
127	outer thread lock screw	$\Phi 5 * 8-M4$	4

Assembly step (3) drawing



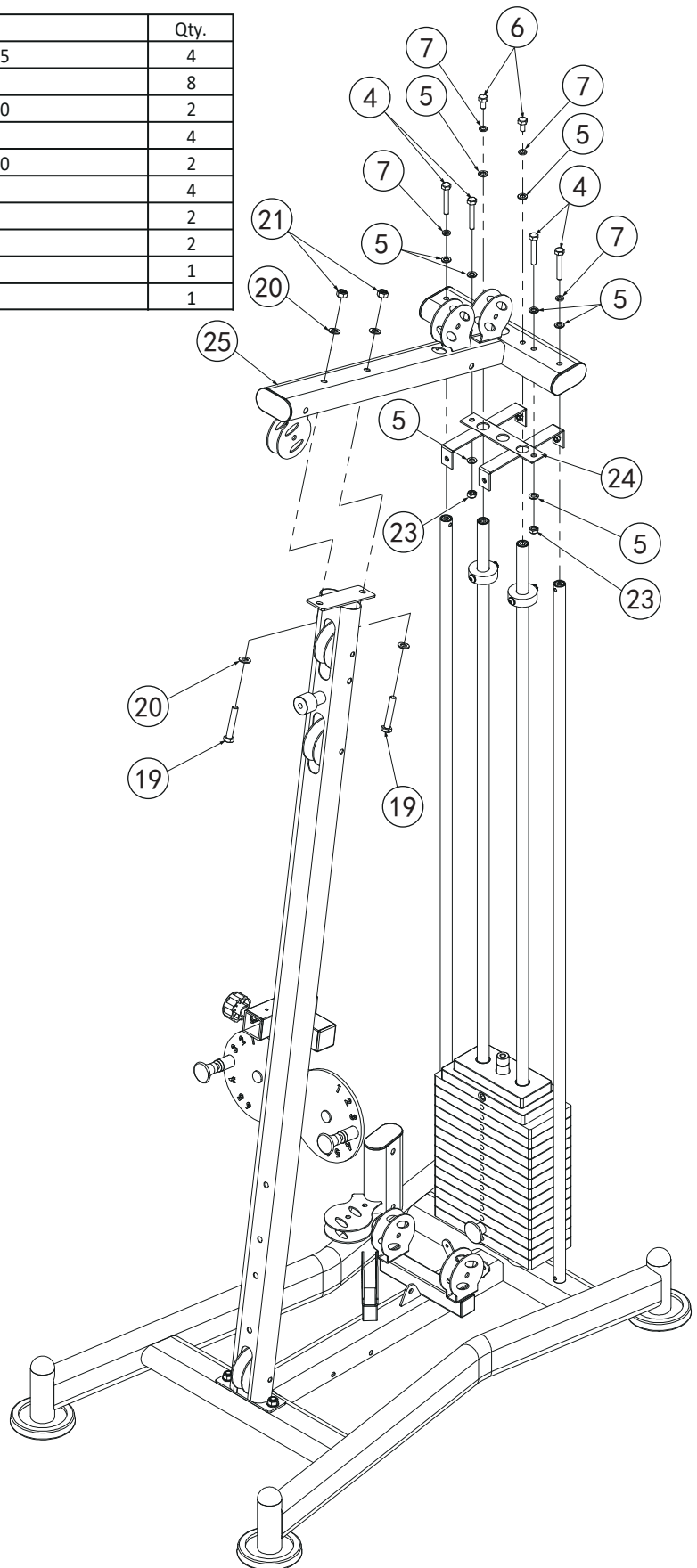
Assembly step (3) assembly instruction

- 1 Fix upright frame-22 fastening on ground frame-1 using M12*70 hexagon bolt-19, Φ 12 gasket-20, M12 lock nut-21.
- 2 Assmby locking spring knob-17 on upright frame-22 .
- 3 Assmby locking spring knob-18 on upright frame-22.

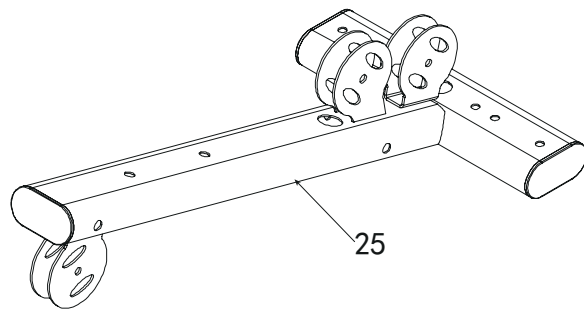
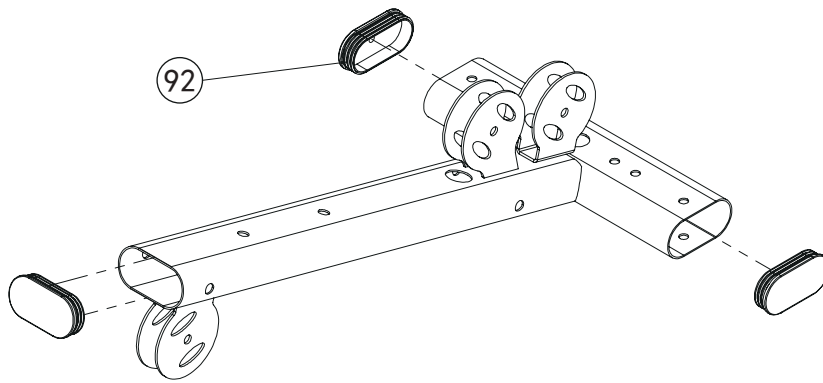
CAUTION: The hexagon bolt need to tighten .

Assembly step (4) explosion drawing

No.	Description	Note	Qty.
4	hexagon bolt	M10*65	4
5	gasket	Φ10	8
6	hexagon bolt	M10*20	2
7	spring gasket	Φ10	4
19	hexagon bolt	M12*70	2
20	gasket	Φ12	4
21	lock nut	M12	2
23	lock nut	M10	2
24	shield support frame		1
25	upper frame		1

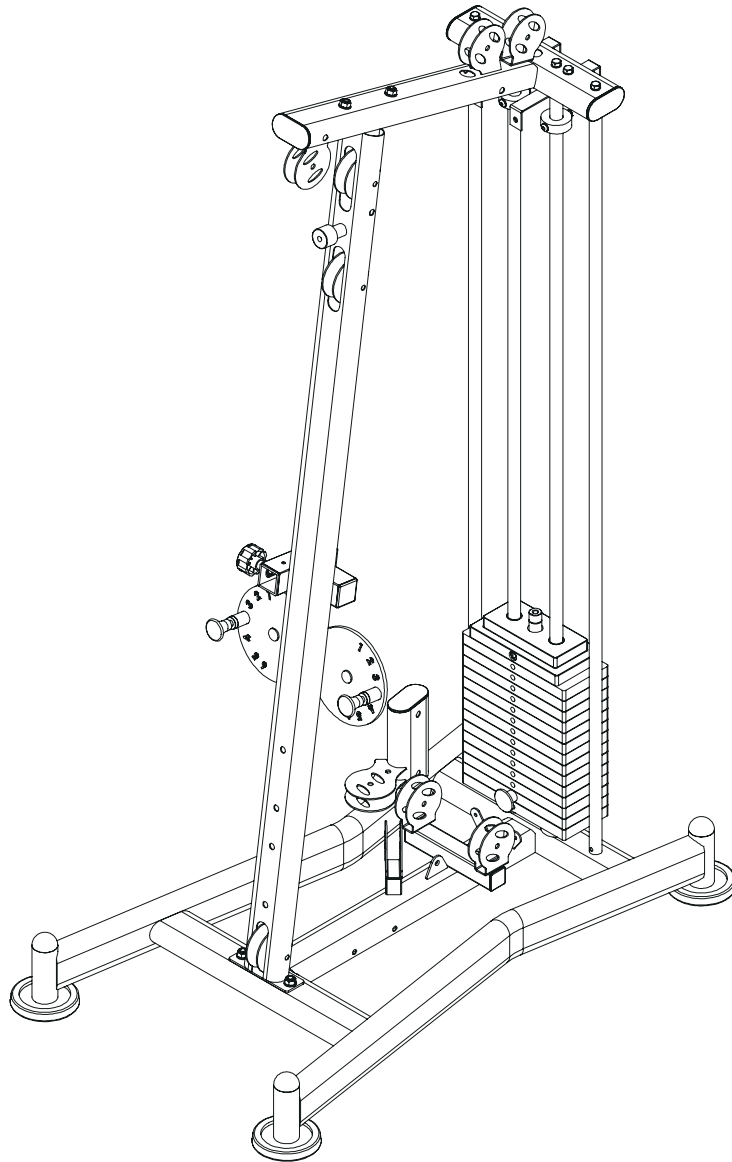


Factory Assembly Drawing



No.	Description	Note	Qty.
92	tube plug	50-100	3

Assembly step (4) drawing



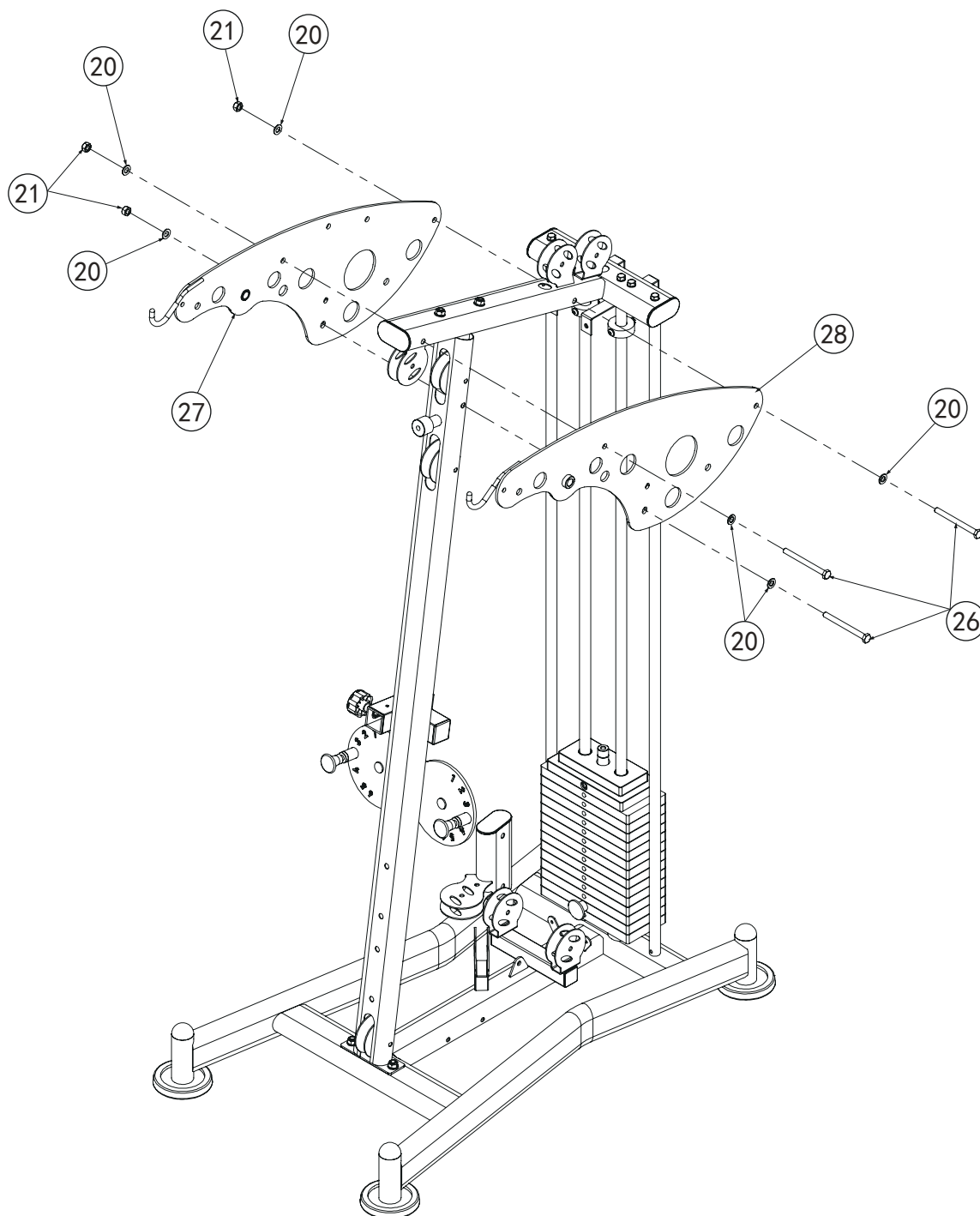
Assembly step (4) assembly instruction

- 1 Put shield support frame-24 and guide rod together.
- 2 Fix upper frame-25 fastening with guide rod using M10*20 hexagon bolt-6, Φ 10 spring gasket-7, Φ 10 gasket-5.
- 3 Fix upper frame-25 fastening on upright frame using M12*70 hexagon bolt-19, Φ 12 gasket-20, M12 lock nut-21.
- 4 Fix upper frame-25 fastening on back support tube-3 using M10*65 hexagon bolt-4, Φ 10 spring gasket-7, Φ 10 gasket-5.
- 5 Fix shield support frame-24 fastening on upper frame-25 using M10*65 hexagon bolt- 4, Φ 10 gasket-5, M10 lock nut-23.

CAUTION: All bolts should be tightening.

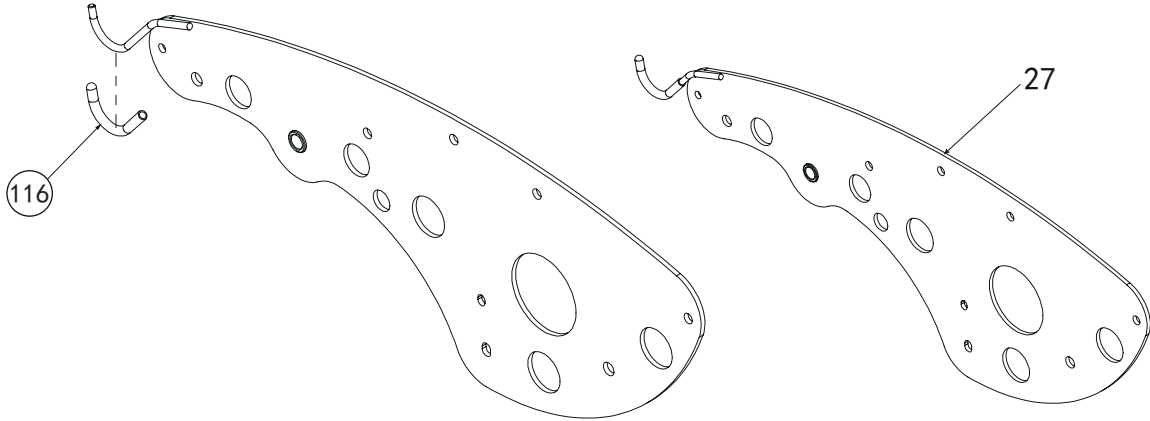
Assembly step (5) explosion drawing

No.	Description	Note	Qty.
20	gasket	Φ12	6
21	lock nut	M12	3
26	hexagon bolt	M12*130	3
27	right cover		1
28	left cover		1

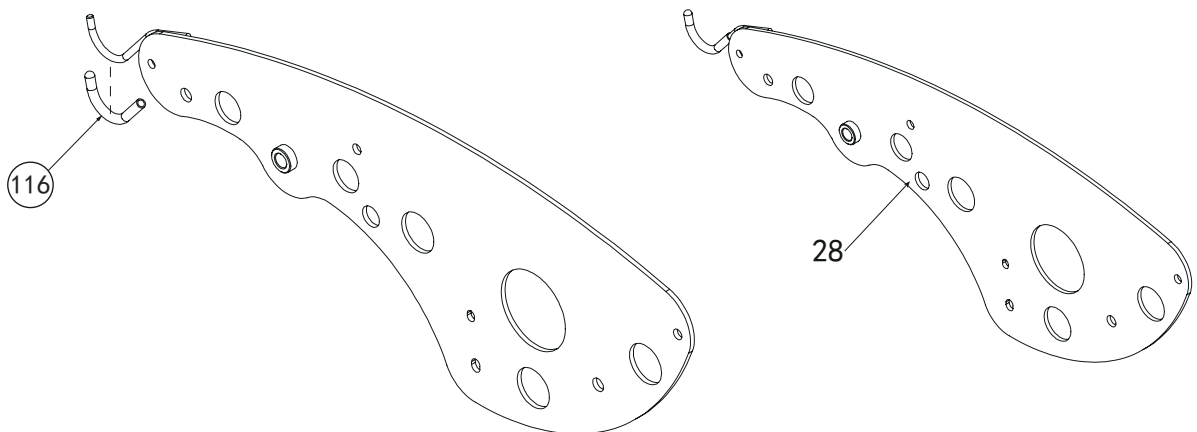


Factory Assembly Drawing

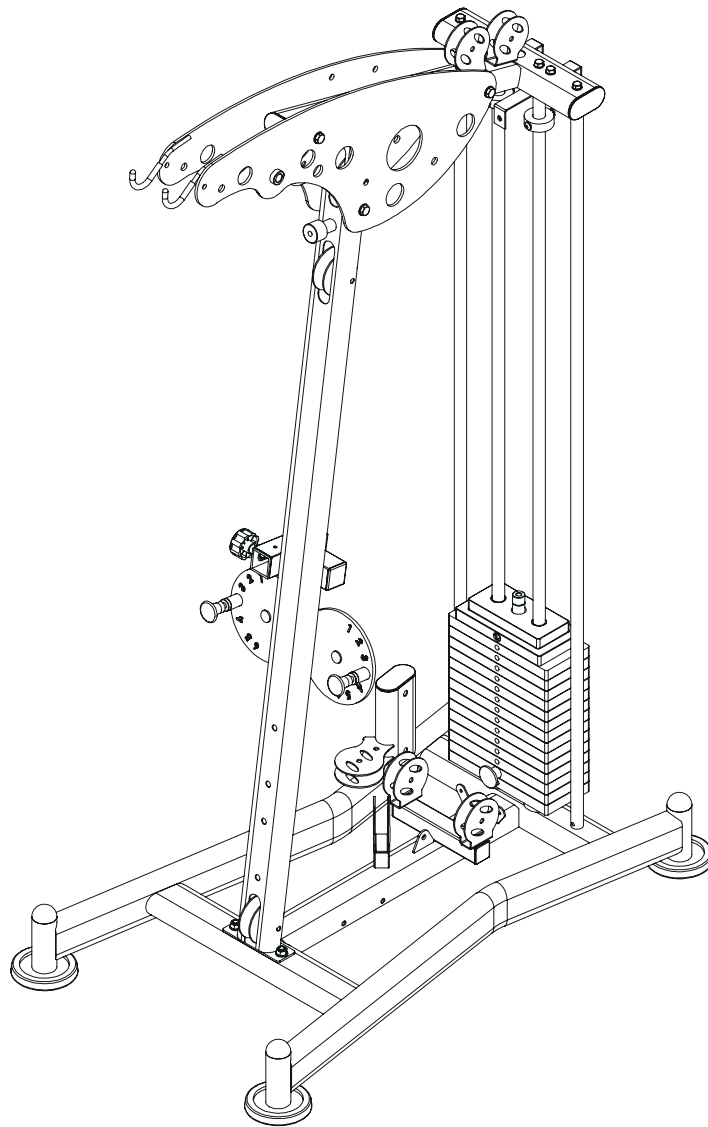
No.	Description	Note	Qty.
116	cover	Φ8,one end open	1



No.	Description	Note	Qty.
116	cover	Φ8,one end open	1



Assembly step (5) drawing



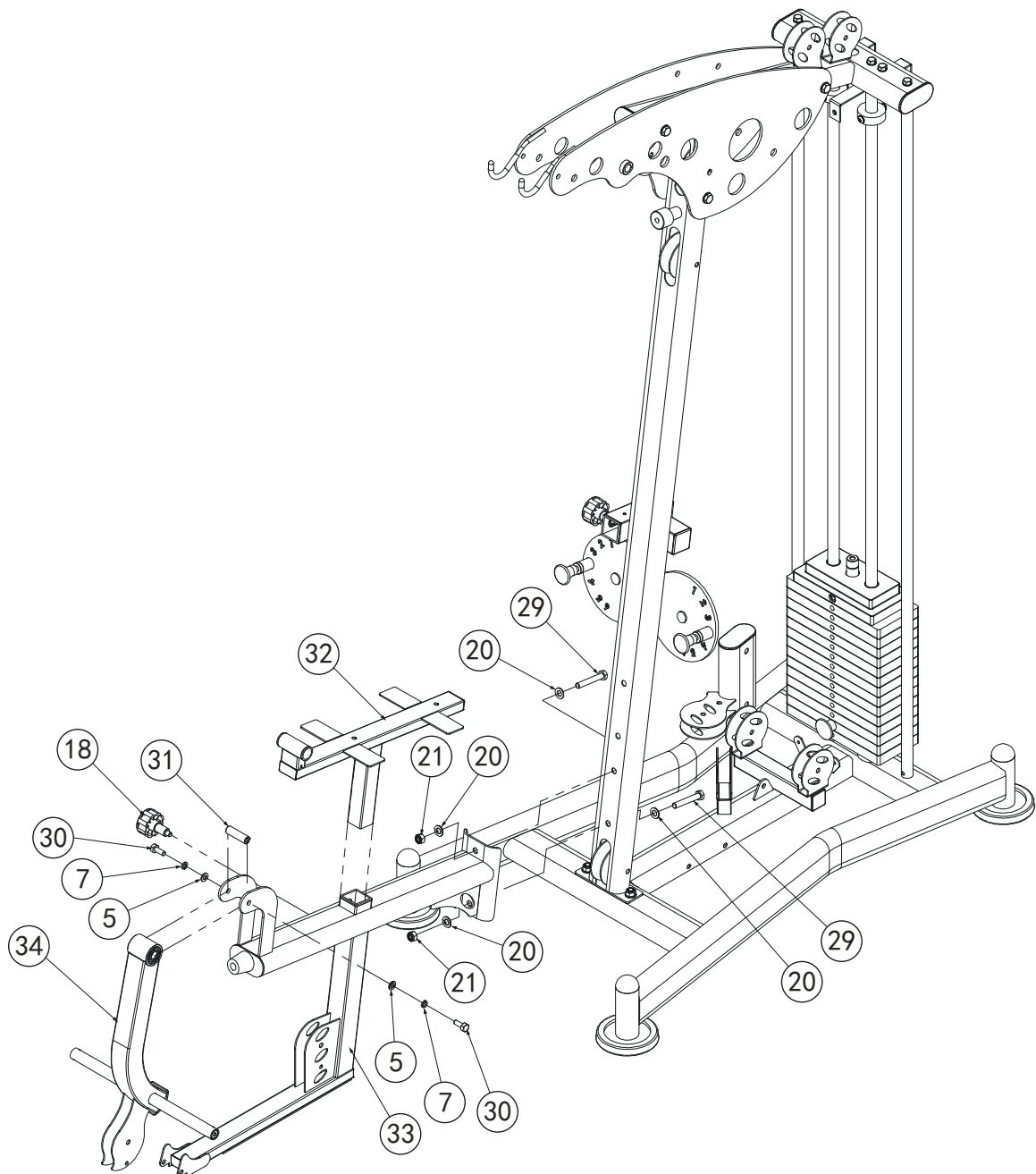
Assembly step (5) assembly instruction

Fix right cover-27 and left cover-28, on upper frame using M12*130 hexagon bolt-26, Φ 12 gasket-20, M12 lock nut-21.

CAUTION: All bolts should be tightening.

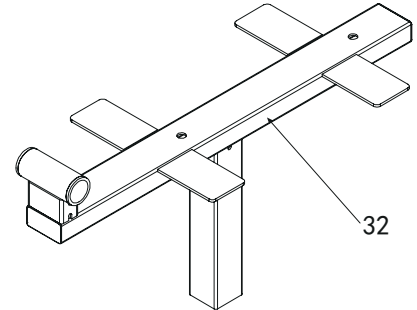
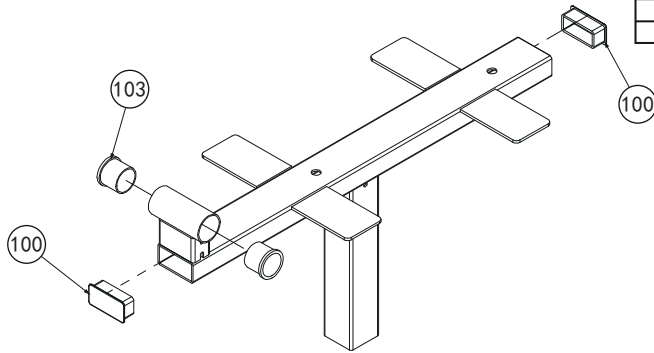
Assembly step (6) explosion drawing

No.	Description	Note	Qty.
5	gasket	Φ10	2
7	spring gasket	Φ10	2
18	locking spring knob	M18*1.5*Φ10	1
20	gasket	Φ12	4
21	lock nut	M12	2
29	hexagon bolt	M12*75	2
30	hexagon bolt	M10*25	2
31	shaft	Φ17*57	1
32	seat pad adjuster tube		1
33	seat pad tube		1
34	leg curl tube		1

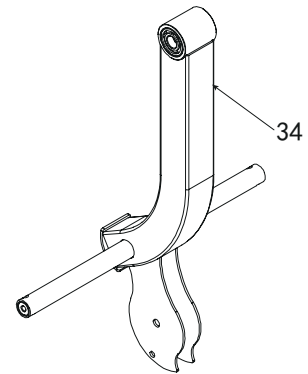
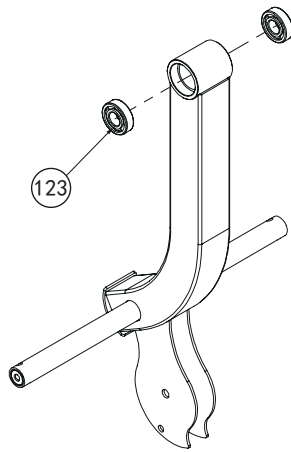


Factory Assembly Drawing

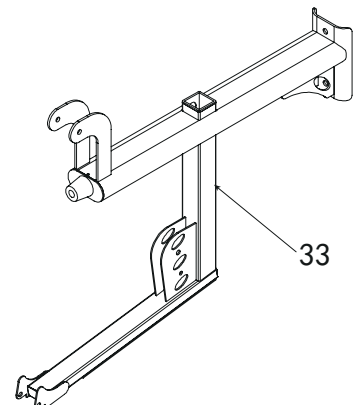
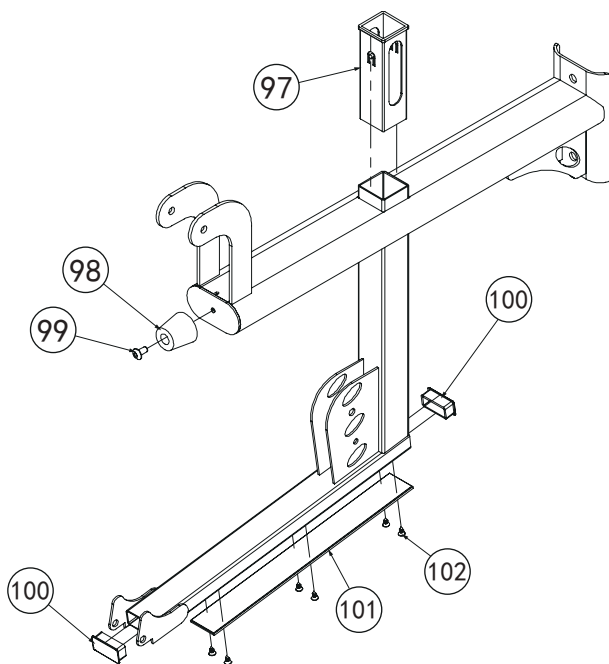
No.	Description	Note	Qty.
100	tube plug	□25*50	2
103	tube plug	Φ32*Φ26*25	2



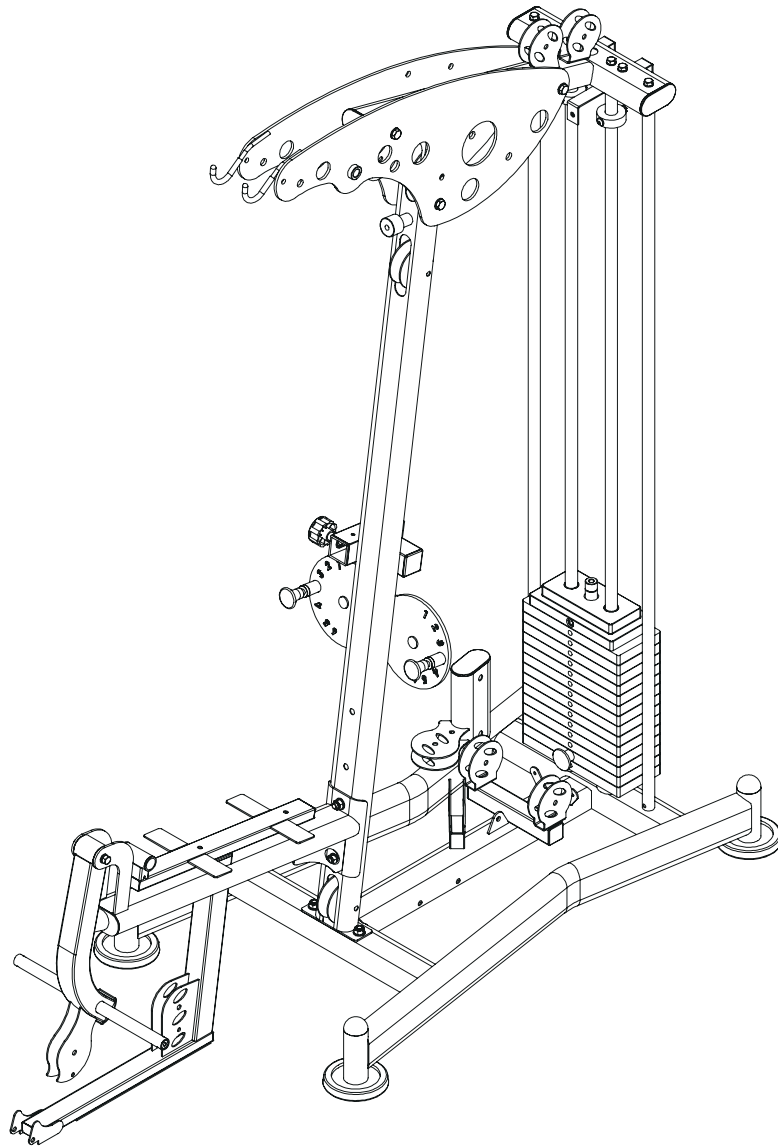
No.	Description	Note	Qty.
123	bearing	Φ32*Φ20*18	2



No.	Description	Note	Qty.
97	reducing sleeve	□50-40L	1
98	rubber cushion	Φ45*Φ34*40	1
99	allen bolt	M8*16	1
100	tube plug	□25*50	2
101	rubber sheet	387*45*6	1
102	screw	M4*12	6



Assembly step (6) drawing



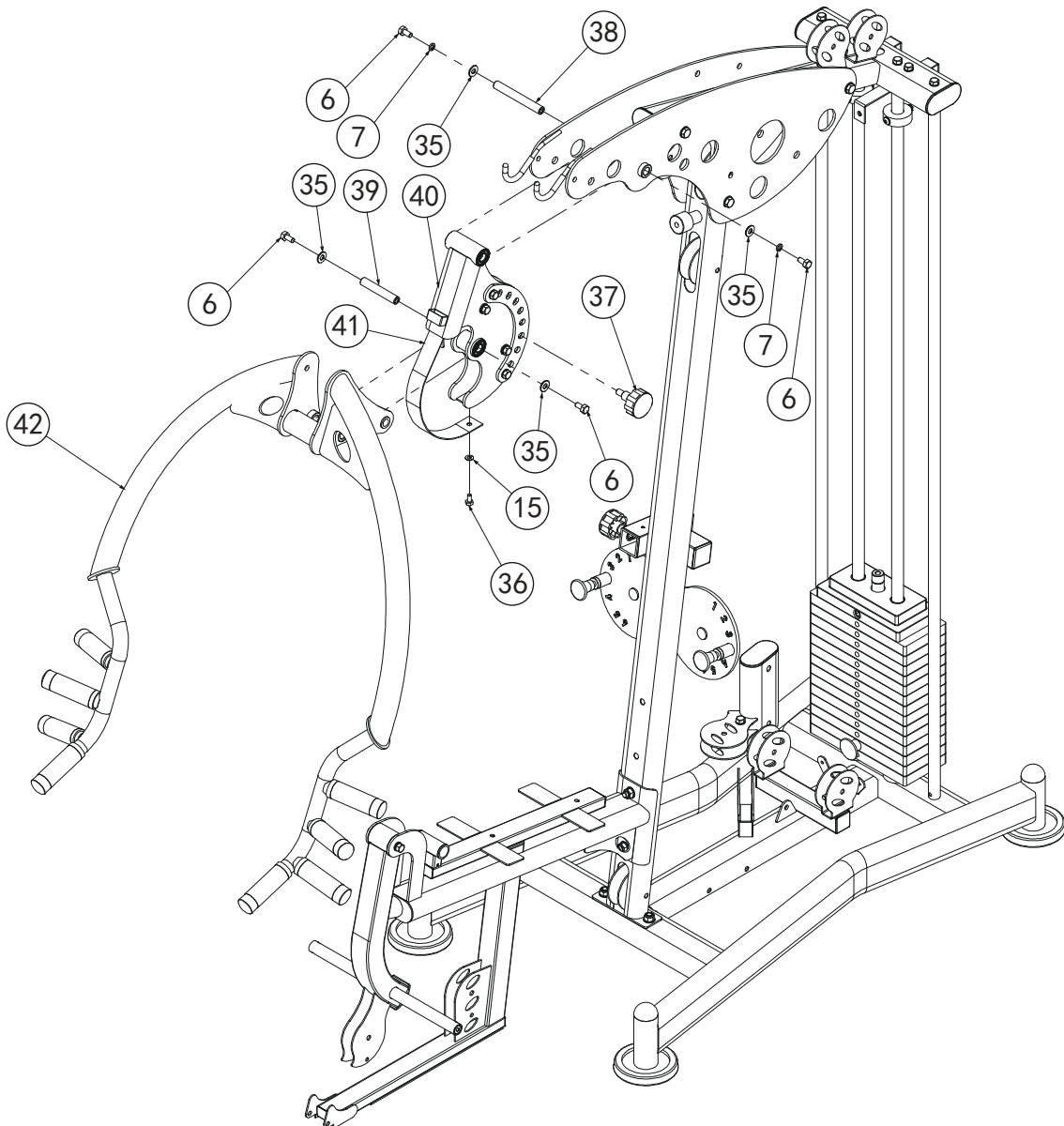
Assembly step (6) assembly instruction

- 1 Fix seat pad tube-33 fastening on upright frame using M12*75 hexagon bolt-29, Φ 12 gasket-20, M12 lock nut-21.
- 2 Fix leg curl tube-34 on seat pad tube-33 using shaft-31, M10*25 hexagon bolt-30, Φ 10 spring gasket-7, Φ 10 gasket-5.
- 3 Fix seat pad adjuster tube-32 fastening on seat pad tube-33 using locking spring knob-18.

CAUTION: All bolts should be tightening.

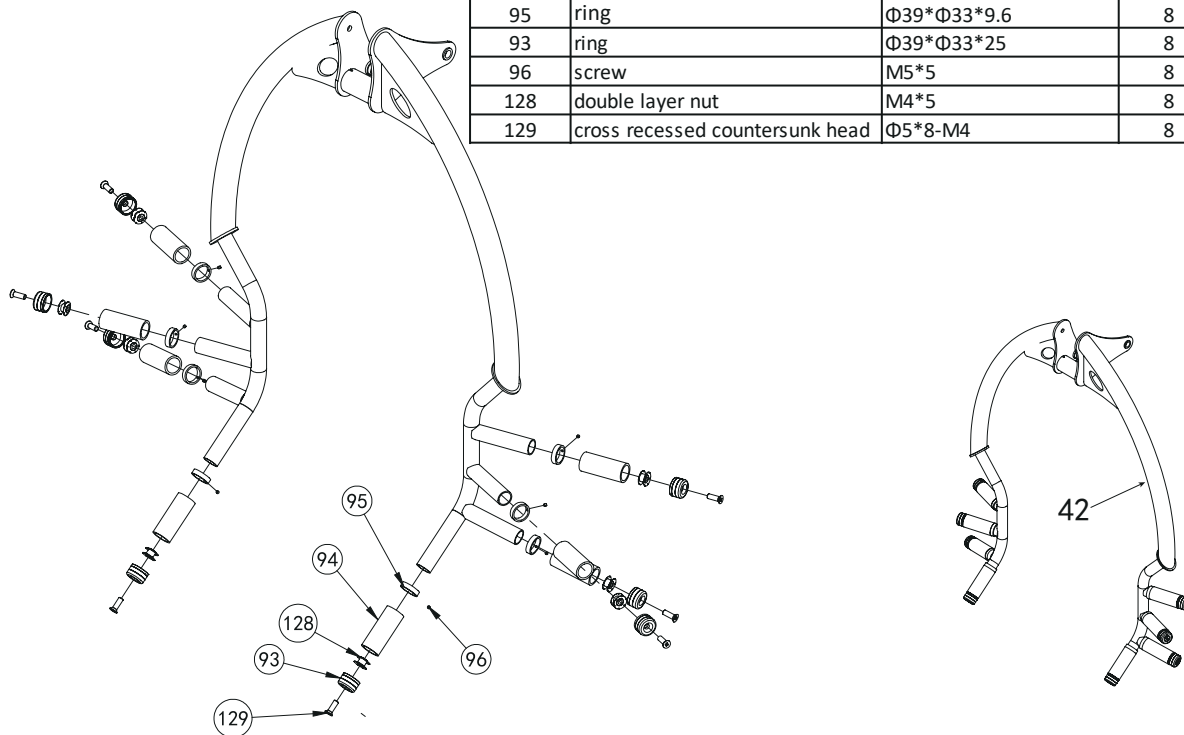
Assembly step (7) explosion drawing

No.	Description	Note	Qty.
6	hexagon bolt	M10*20	4
7	spring gasket	Φ10	2
15	gasket	Φ8	1
35	big gasket	Φ25*10*2.0	4
36	hexagon bolt	M8*16	1
37	locking spring knob	Φ12	1
38	shaft	Φ17*134	1
39	shaft	Φ17*100	1
40	front push holder		1
41	guard plate		1
42	front push arm		1

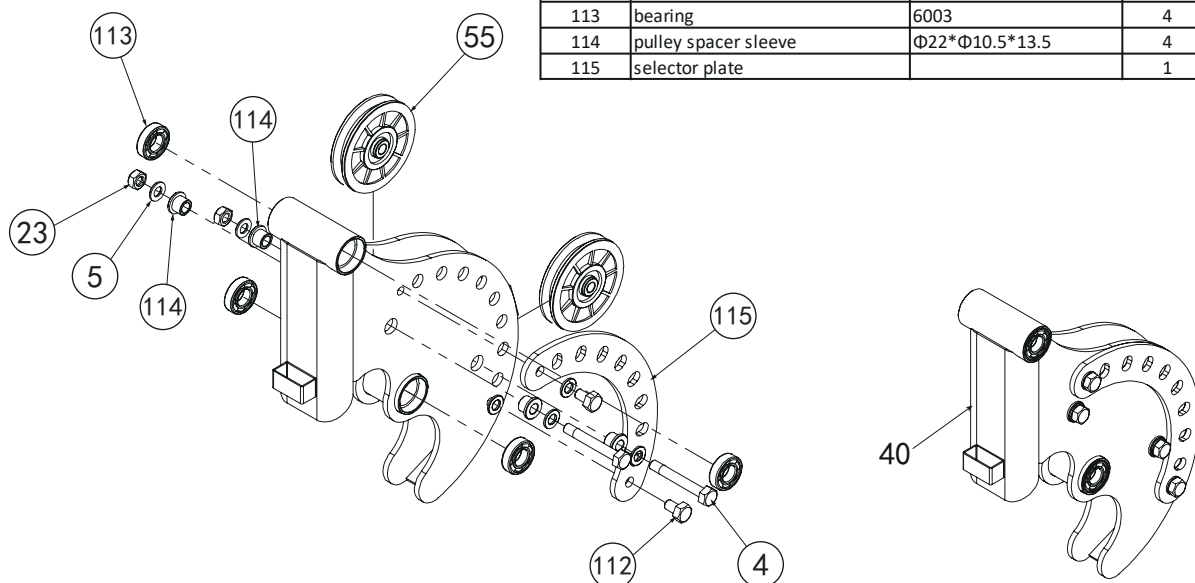


Factory Assembly Drawing

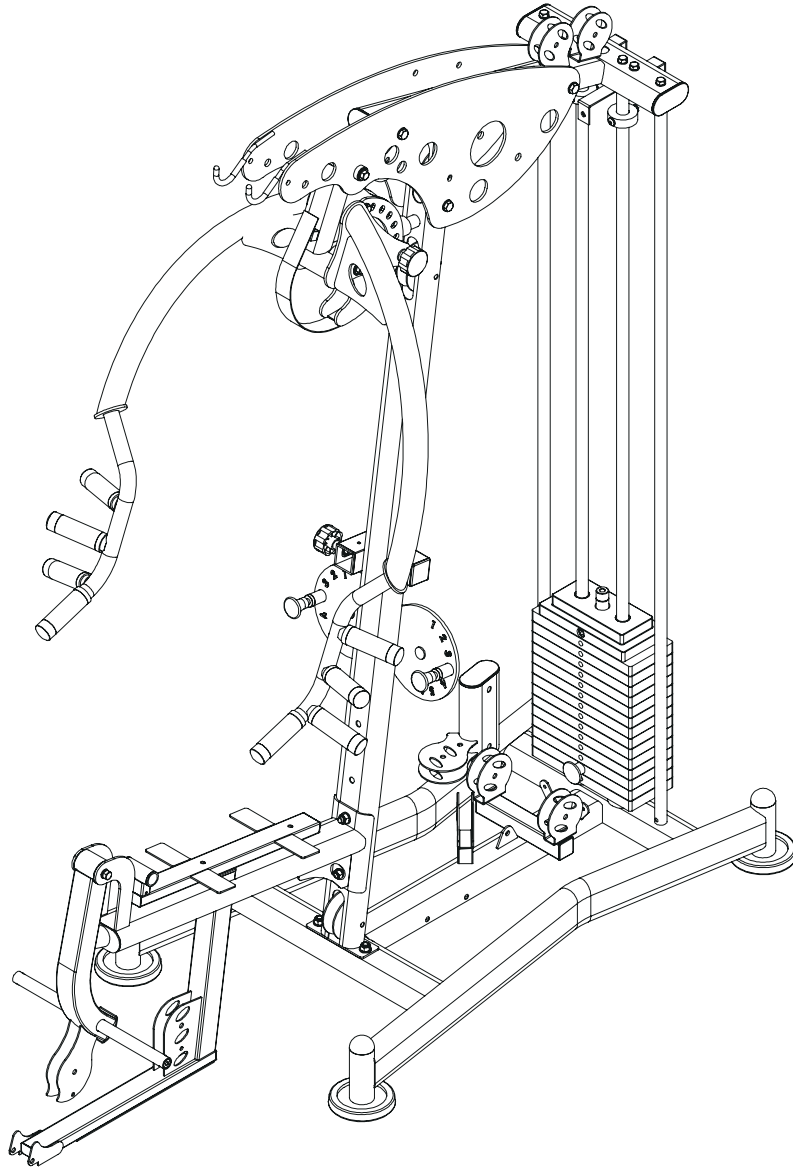
No.	Description	Note	Qty.
94	handle cover	Φ32*95	8
95	ring	Φ39*Φ33*9.6	8
93	ring	Φ39*Φ33*25	8
96	screw	M5*5	8
128	double layer nut	M4*5	8
129	cross recessed countersunk head	Φ5*8-M4	8



No.	Description	Note	Qty.
4	hexagon bolt	M10*65	2
5	gasket	Φ10	6
23	lock nut	M10	2
55	pulley	Φ95*26	2
112	hexagon bolt	M10*16	2
113	bearing	6003	4
114	pulley spacer sleeve	Φ22*Φ10.5*13.5	4
115	selector plate		1



Assembly step (7) drawing



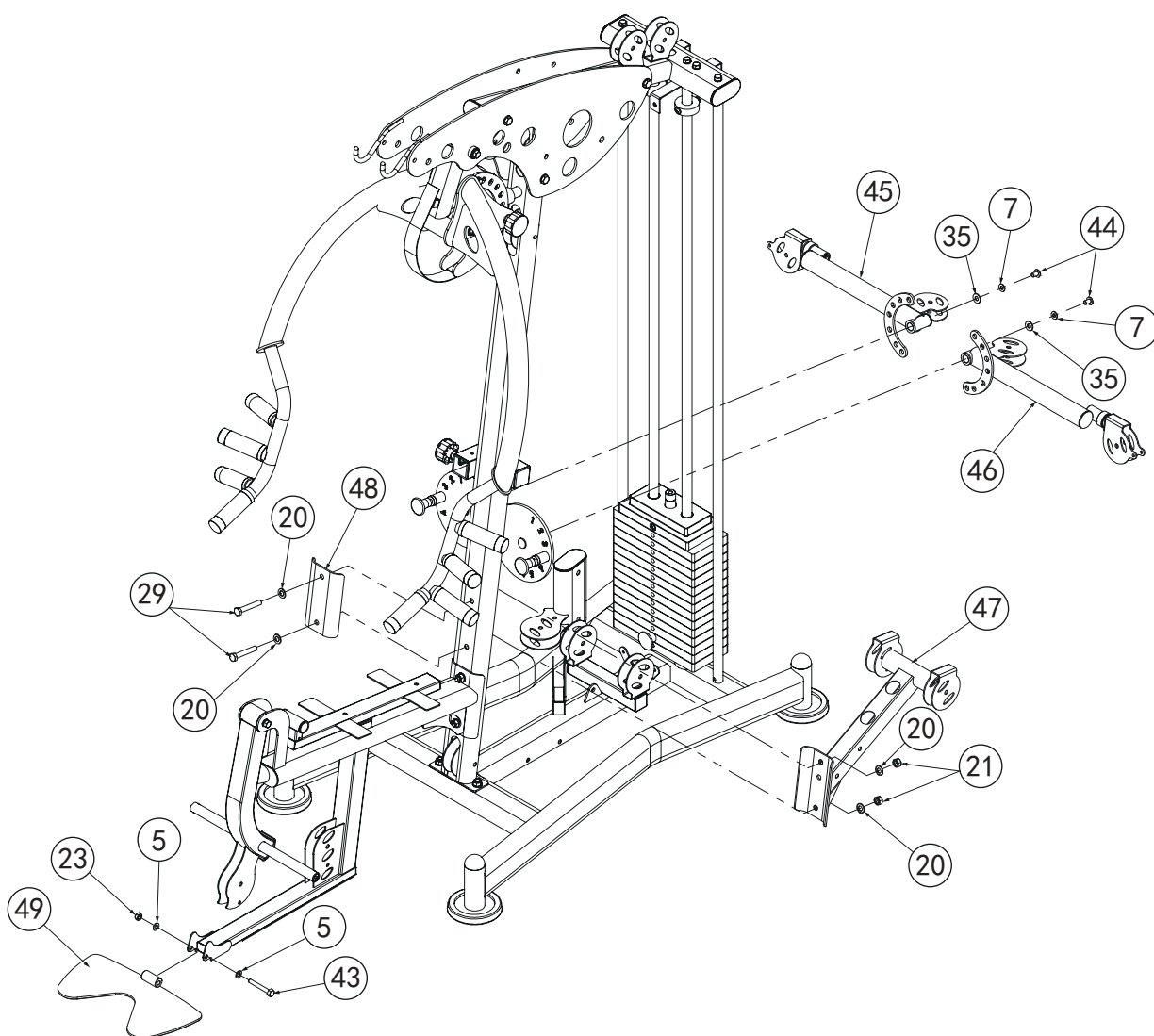
Assembly step (7) assembly instruction

- 1 Fix front push holder-40 fastening on left cover and right cover using shaft-38, M10*20 hexagon bolt-6, Φ 10 spring gasket-7, Φ 10 big gasket-35.
- 2 Fix front push arm-42 and front push holder-40 using shaft-39, M10*20 hexagon bolt-6, Φ 10 big gasket-35, locking spring knob-37.
- 3 Fix guard plate-41 fastening on front push holder-40 using M8*16 hexagon bolt-36, Φ 8 gasket-15.

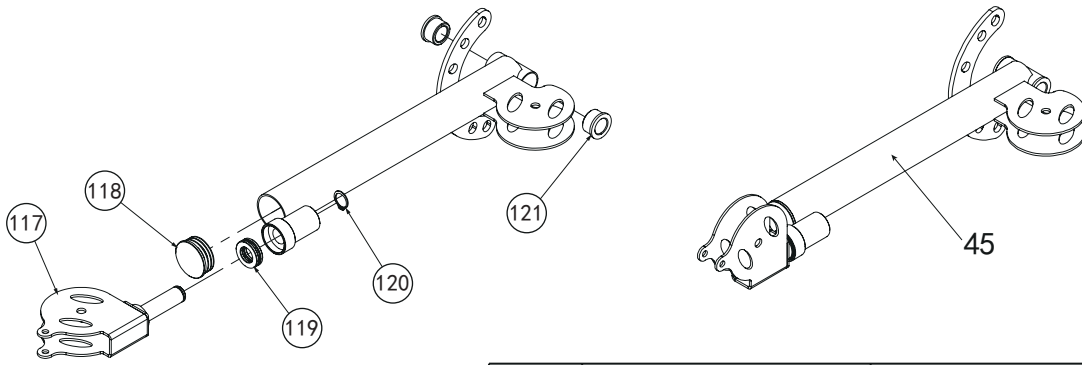
CAUTION: All bolts and pins should be tightening.

Assembly step (8) explosion drawing

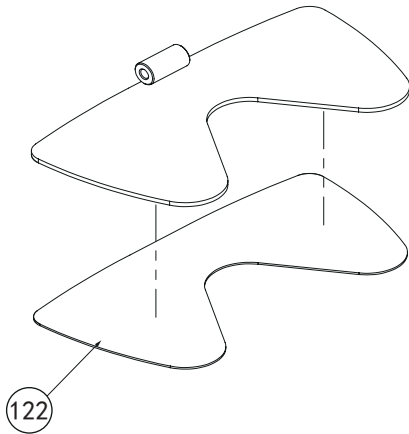
No.	Description	Note	Qty.
5	gasket	Φ10	2
7	spring gasket	Φ10	2
20	gasket	Φ12	4
21	lock nut	M12	2
23	lock nut	M10	1
29	hexagon bolt	M12*75	2
35	big gasket	Φ25*10*2.0	2
43	hexagon bolt	M10*70	1
44	allen bolt	M10*16	2
45	butterfly arm right		1
46	butterfly arm left		1
47	pulley support frame		1
48	reinforcing plate		1
49	footplate		1



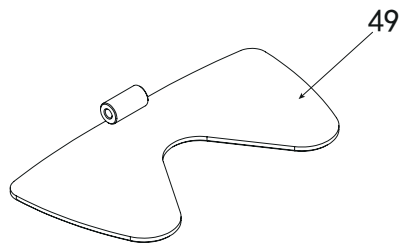
Factory Assembly Drawing



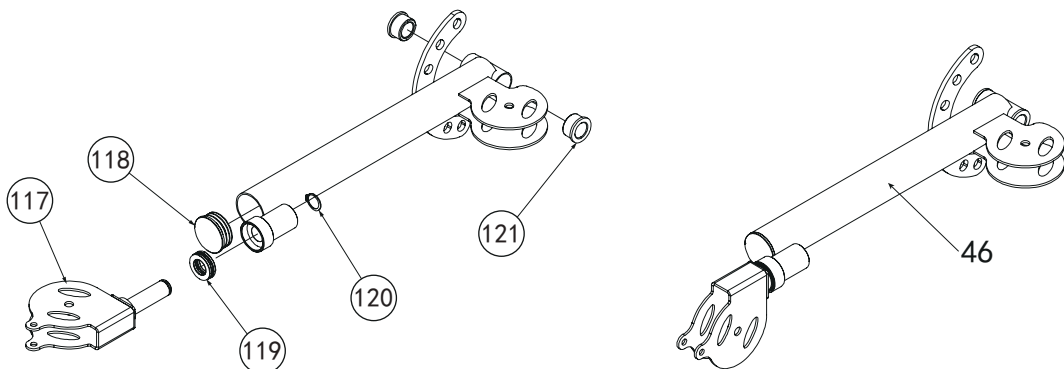
No.	Description	Note	Qty.
117	pulley plate		1
118	tube plug	Φ48	1
119	bearing	51104	1
120	ring	Φ20	1
121	powder metallurgy sleeve	Φ32*Φ20*18	2



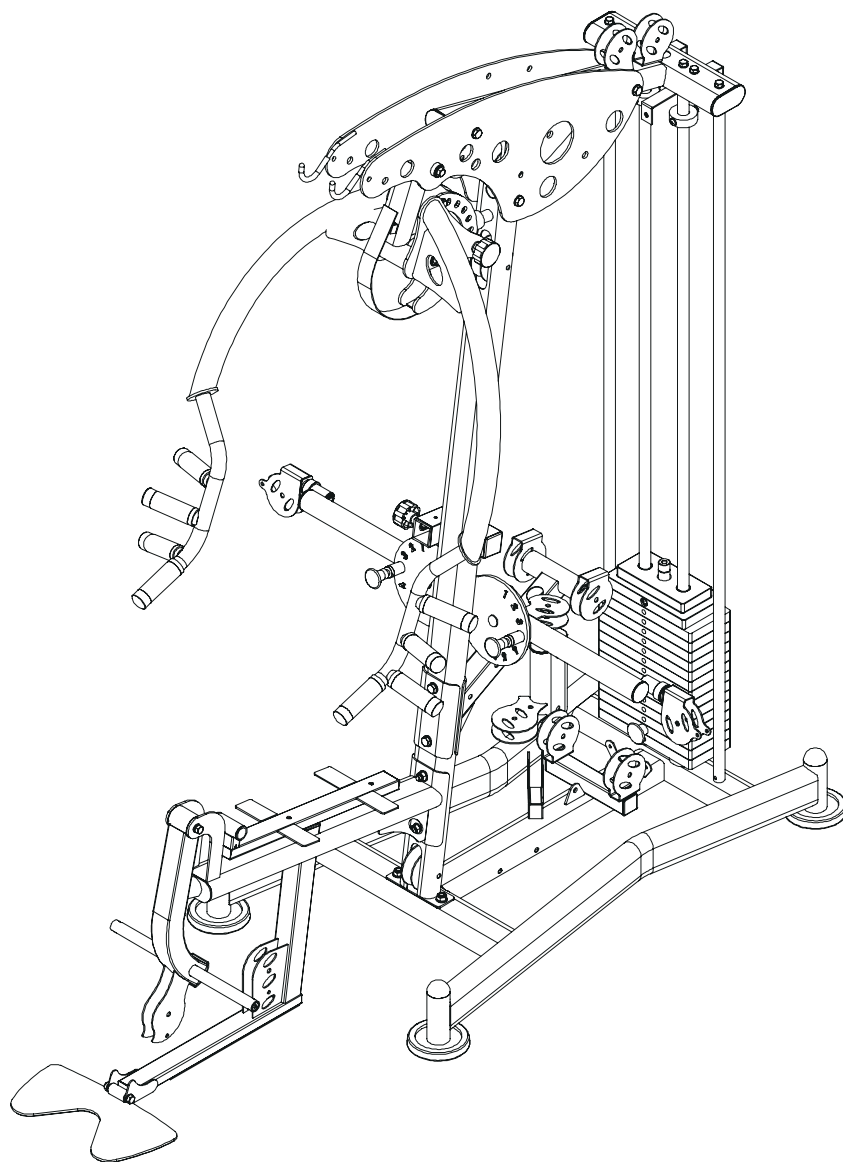
No.	Description	Note	Qty.
122	footplate rubber sheet	Φ20	1



No.	Description	Note	Qty.
117	pulley plate		1
118	tube plug	Φ48	1
119	bearing	51104	1
120	ring	Φ20	1
121	powder metallurgy sleeve	Φ32*Φ20*18	2



Assembly step (8) drawing

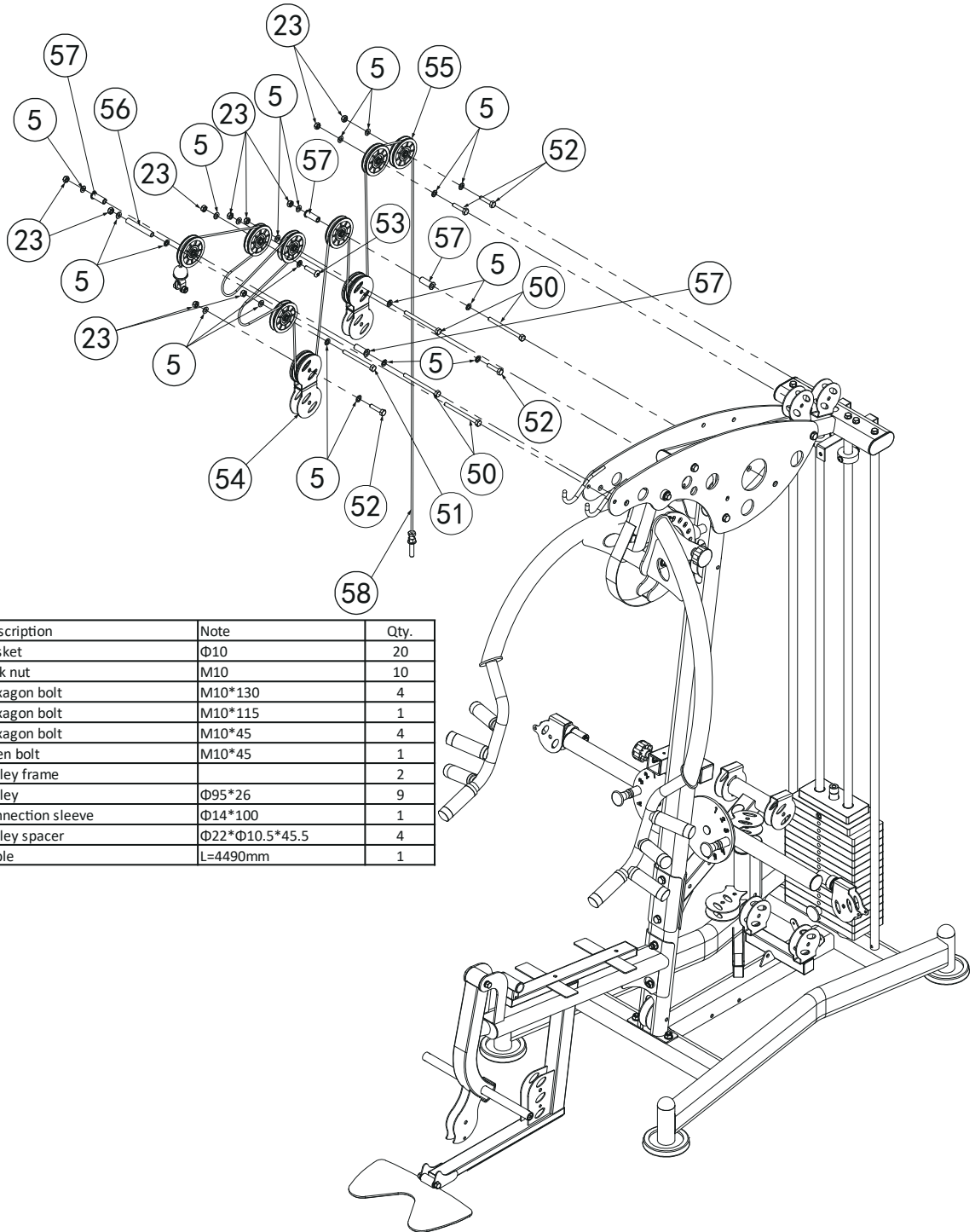


Assembly step (8) assembly instruction

- 1 Fix butterfly arm left-46 on upright frame using M10*16 allen bolt-44, Φ 10 spring gasket-7, Φ 10 big gasket-35.
- 2 Fix butterfly arm right-45 on upright frame using M10*16 allen bolt-44, Φ 10 spring gasket-7, Φ 10 big gasket-35.
- 3 Fix pulley support frame-47 on upright frame using M12*75 hexagon bolt-29, Φ 12 gasket-20, reinforcing plate-48 and Φ 12 lock nut-21.
- 4 Fix footplate-49 on seat pad tube using M10*70 hexagon bolt-43, Φ 10 gasket-5, M10 lock nut-23.

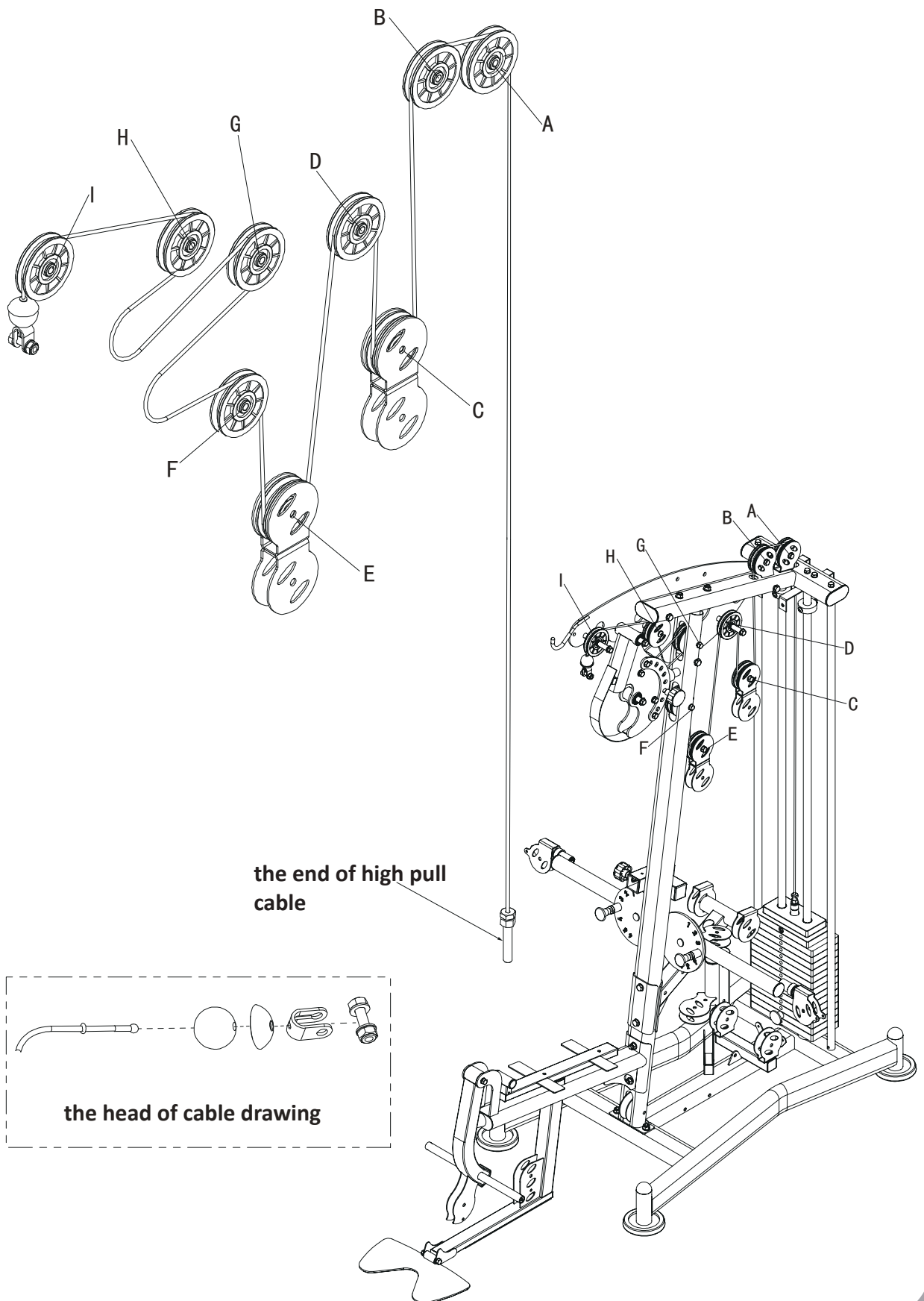
CAUTION: All bolts and pins should be tightening.

Assembly step (9) explosion drawing

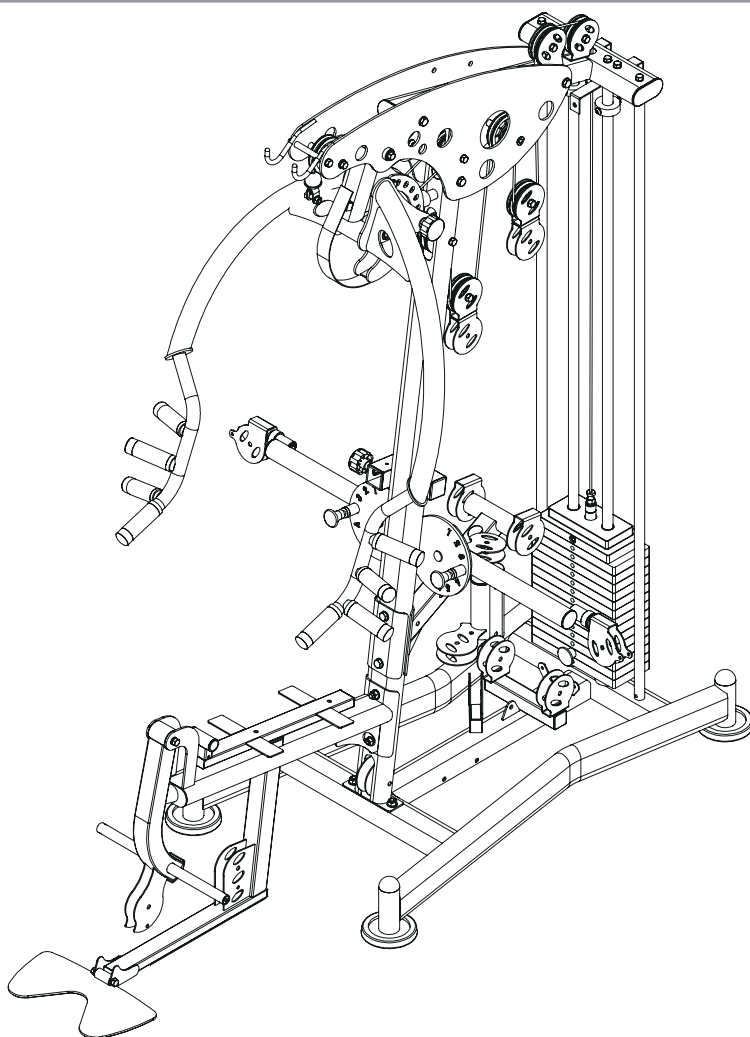


No.	Description	Note	Qty.
5	gasket	Φ10	20
23	lock nut	M10	10
50	hexagon bolt	M10*130	4
51	hexagon bolt	M10*115	1
52	hexagon bolt	M10*45	4
53	allen bolt	M10*45	1
54	pulley frame		2
55	pulley	Φ95*26	9
56	connection sleeve	Φ14*100	1
57	pulley spacer	Φ22*Φ10.5*45.5	4
58	cable	L=4490mm	1

Assembly step-9 cable drawing



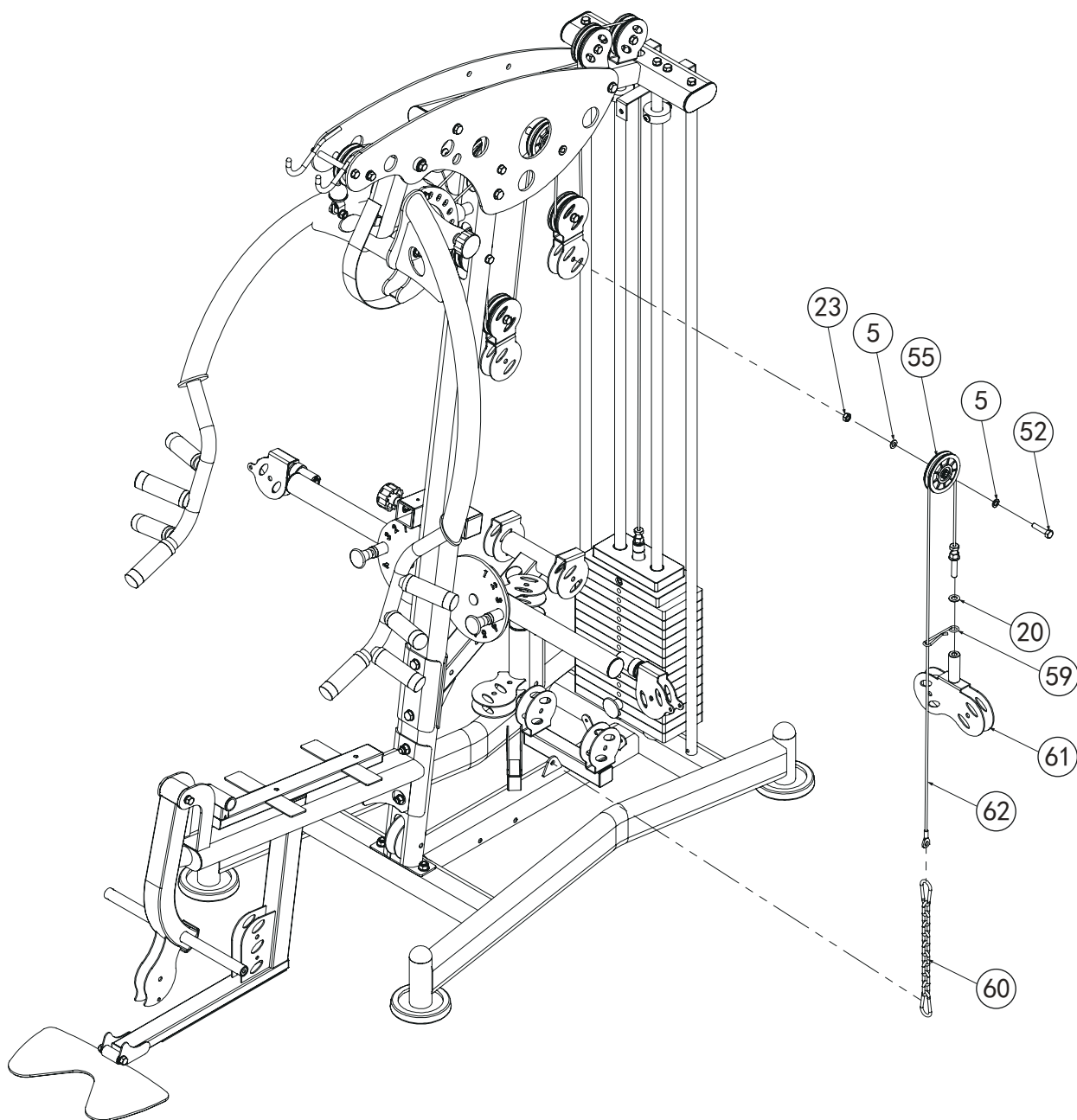
Assembly step (9) drawing



Assembly step (9) assembly instruction

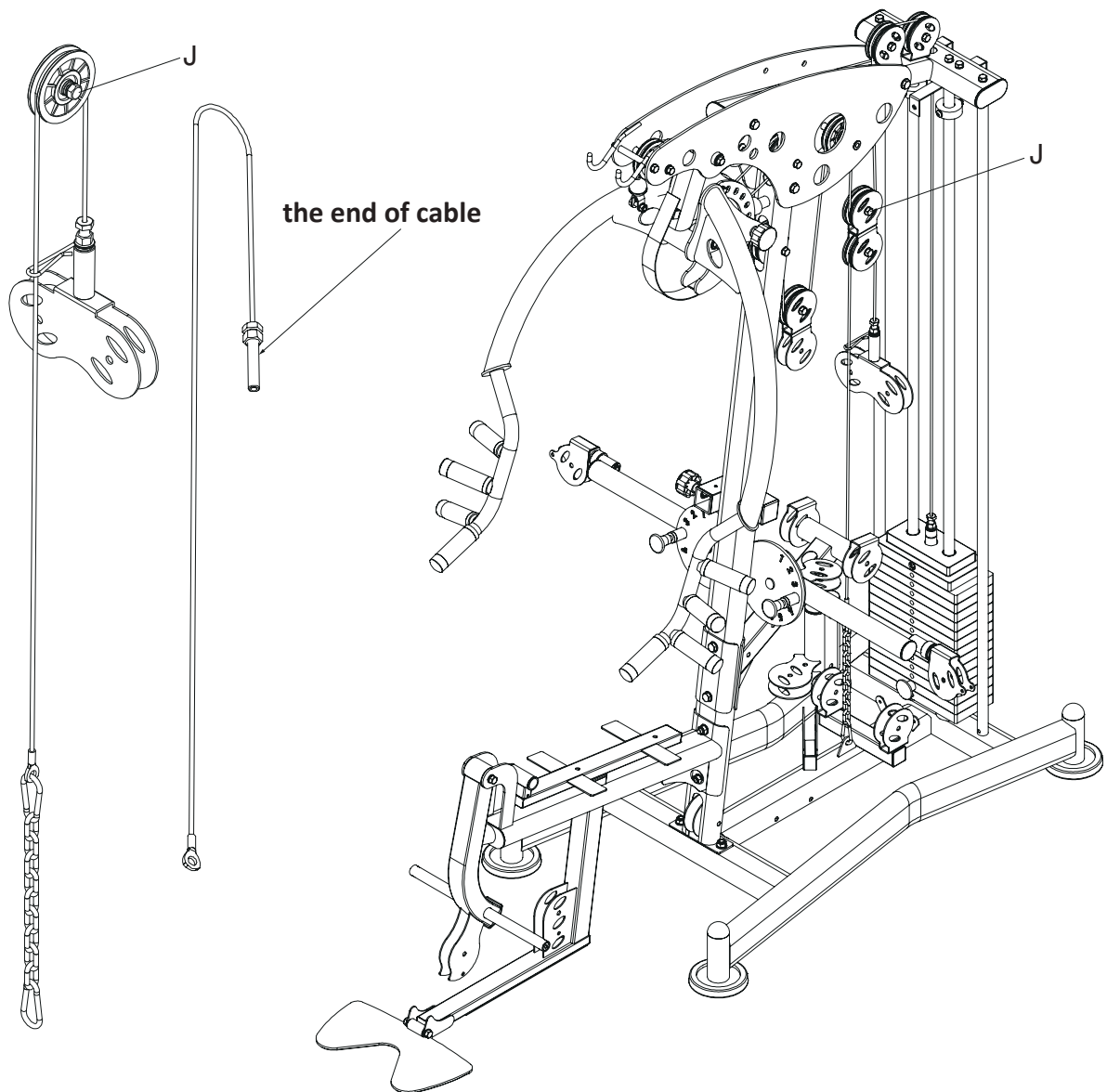
- 1 Fix 4 cps. pulley-55 fastening on point A ,B,C,E using M10*45 hexagon bolt-52, Φ 10 gasket-5, M10 lock nut-23.
- 2 Fix 2 cps. pulley-55 fastening on point I,D using M10*130 hexagon bolt-50, pulley spacer-57, Φ 10 gasket-5, M10 lock nut-23.
- 3 Fix pulley-55 fastening on point G using M10*130 hexagon bolt-50, Φ 10 gasket-5, M10 lock nut-23.
- 4 Fix pulley-55 fastening on point H using M10*45 allen bolt-53, Φ 10 gasket-5, M10 lock nut-23.
- 5 Fix pulley-55 fastening on point F using M10*115 hexagon bolt-51, Φ 10 gasket-5, M10 lock nut-23.
- 6 Fix M10*130 hexagon bolt-50, connecting sleeve-56, Φ 10 gasket-5, M10 lock nut-23 fastening on left cover and right cover-near point I.
- 7 Remove one end of the cable-58 containing the ball end.
- 8 Connect cable-58 terminal and selector rod, head down end from point A in turn through point B,C,D,E,F,G,H,I,final installed ball head back to the cable.

Assembly step (10) explosion drawing



No.	Description	Note	Qty.
5	gasket	Φ10	2
20	gasket	Φ12	1
23	lock nut	M10	1
52	hexagon bolt	M10*45	1
55	pulley	Φ95*26	1
59	cable hook		1
60	9 section chain + snap hook		1
61	double pulley frame		1
62	cable	L=1500mm	1

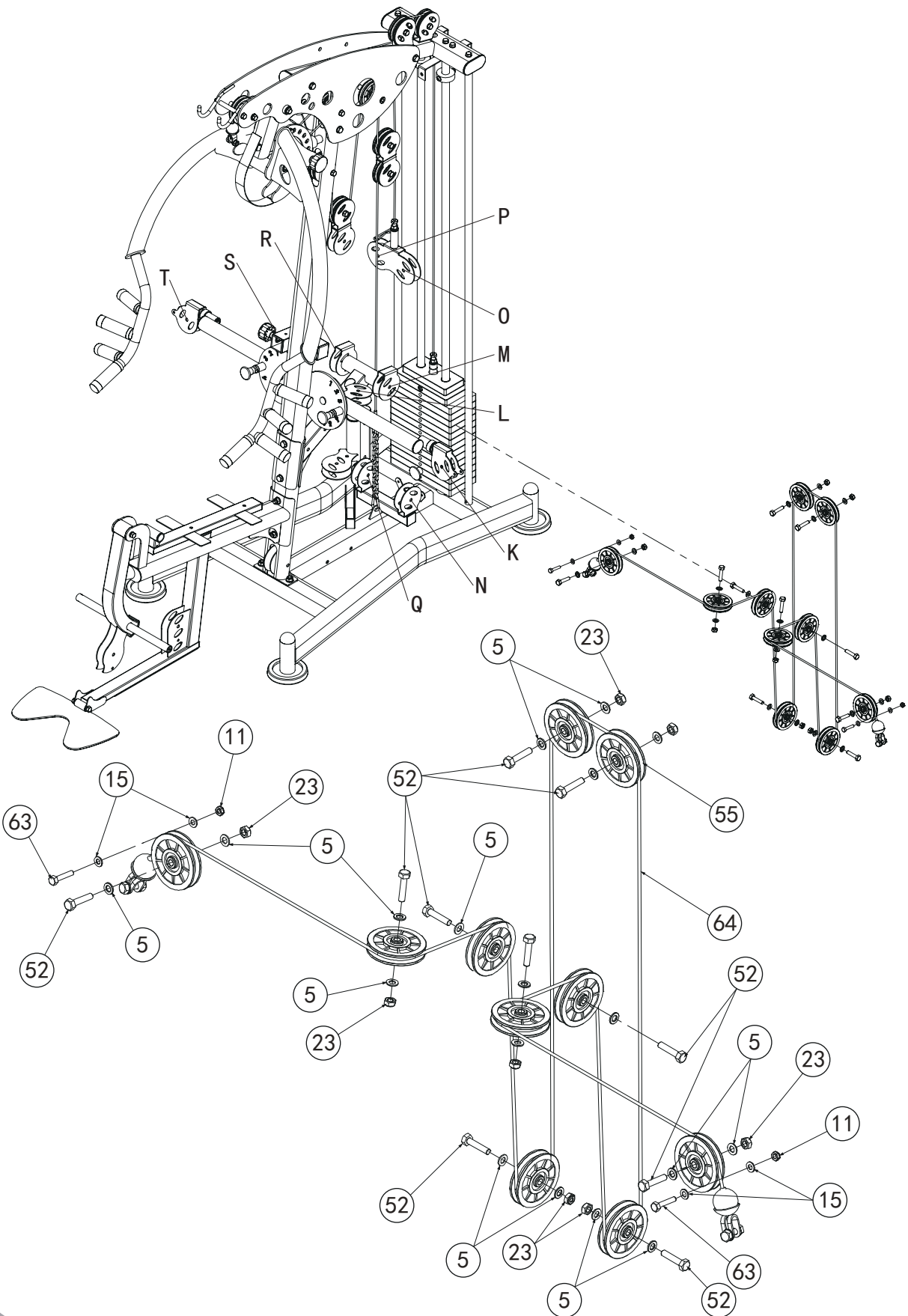
Assembly step (10) drawing



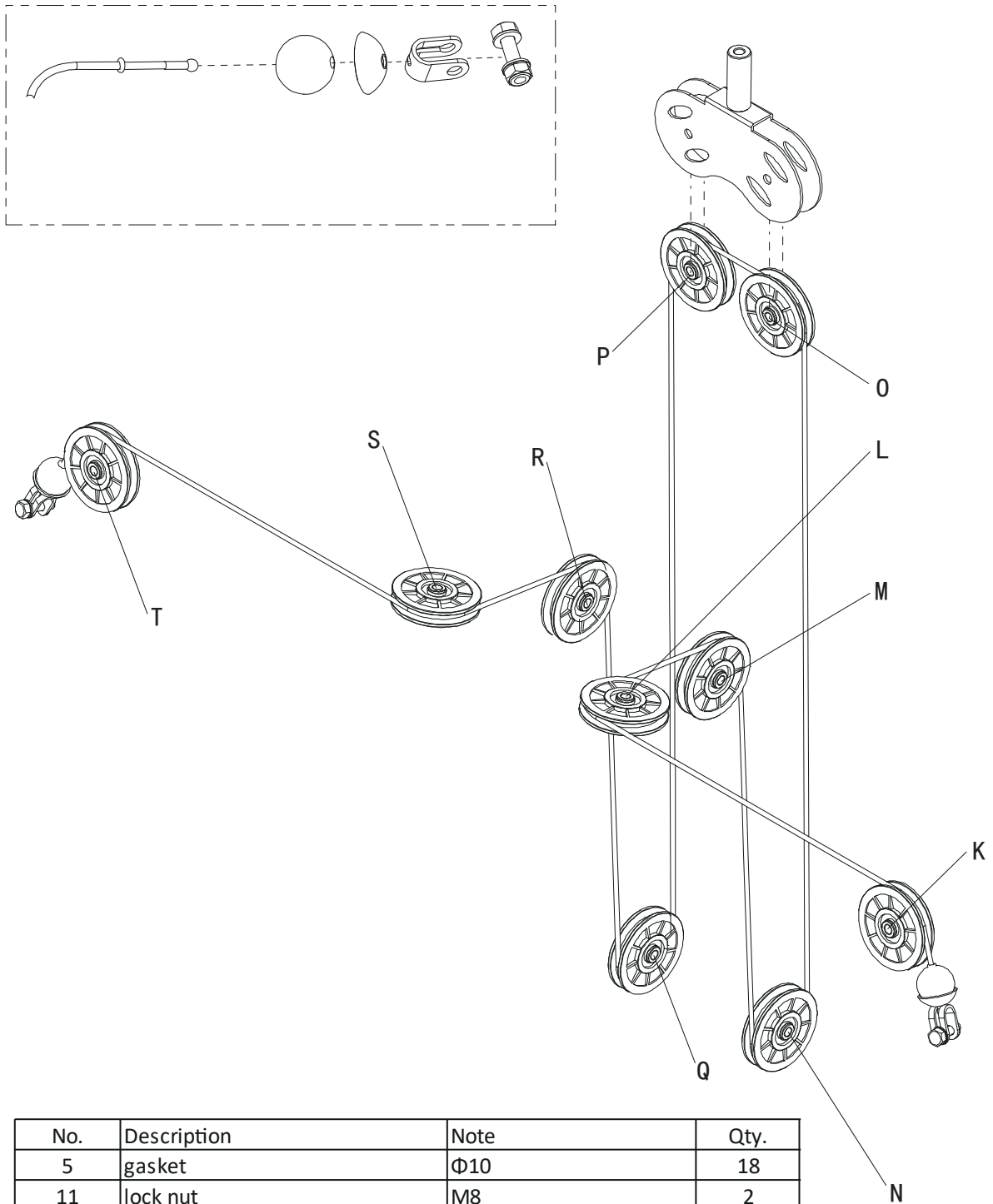
Assembly step (10) assembly instruction

- 1 Connect 9 section chain + snap hook-60 with cable-62, 9 link chain + snap hook-60 other end connect with ground frame.
- 2 Cable-62, through $\Phi 12$ gasket-20 cable hook-59, connect with double pulley plate-61.
- 3 Fix pulley-55 fastening on point J using M10*45 hexagon bolt-52, $\Phi 10$ gasket-5, M10 lock nut-23. Put middle cable-62 at pulley-55 top position point O.
- 4 Hang cable hook-59 on the middle cable-62.

Assembly step (11) explosion drawing

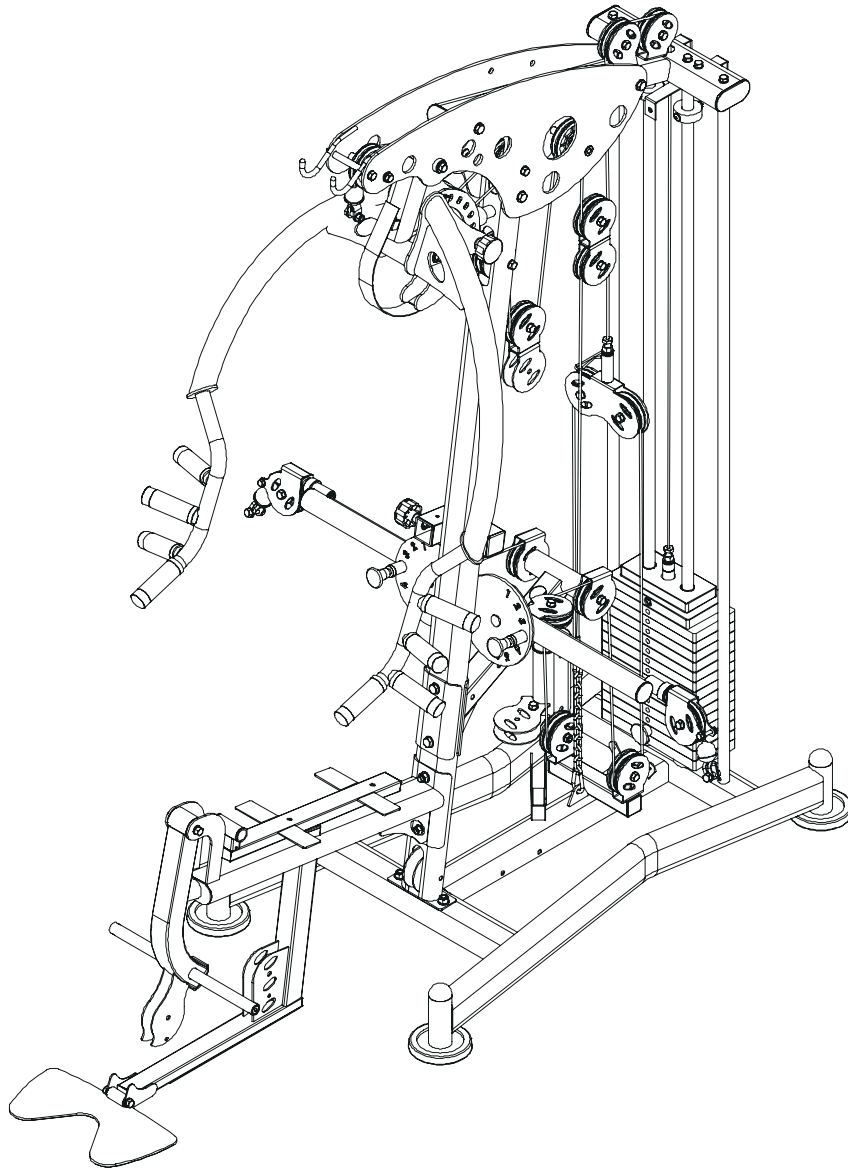


Assembly step-11 cable drawing



No.	Description	Note	Qty.
5	gasket	Φ10	18
11	lock nut	M8	2
15	gasket	Φ8	4
23	lock nut	M10	8
52	hexagon bolt	M10*45	10
55	pulley	Φ95*26	10
63	hexagon bolt	M8*45	2
64	cable	L=5375mm	1

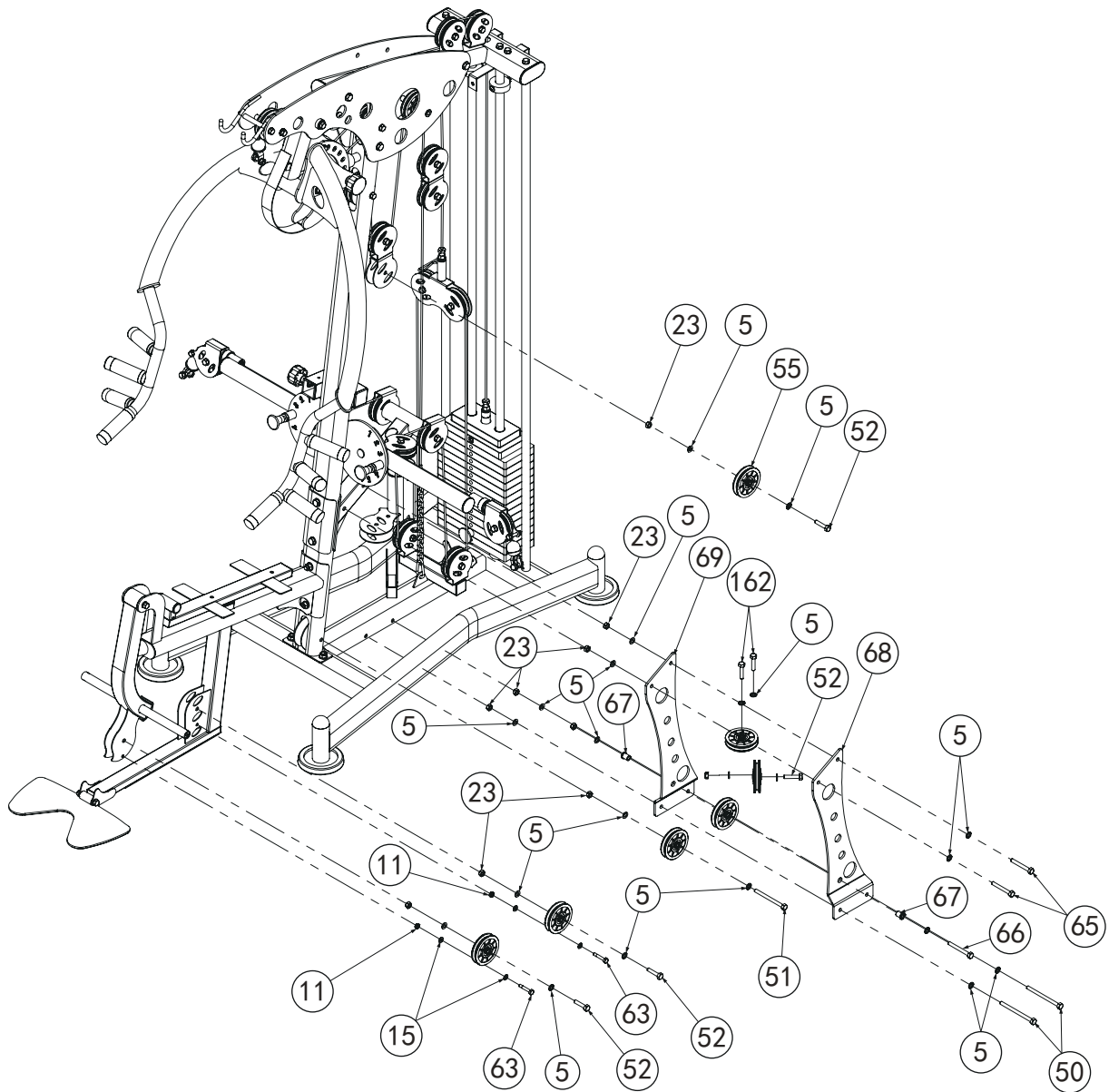
Assembly step (11) drawing



Assembly step (11) assembly instruction

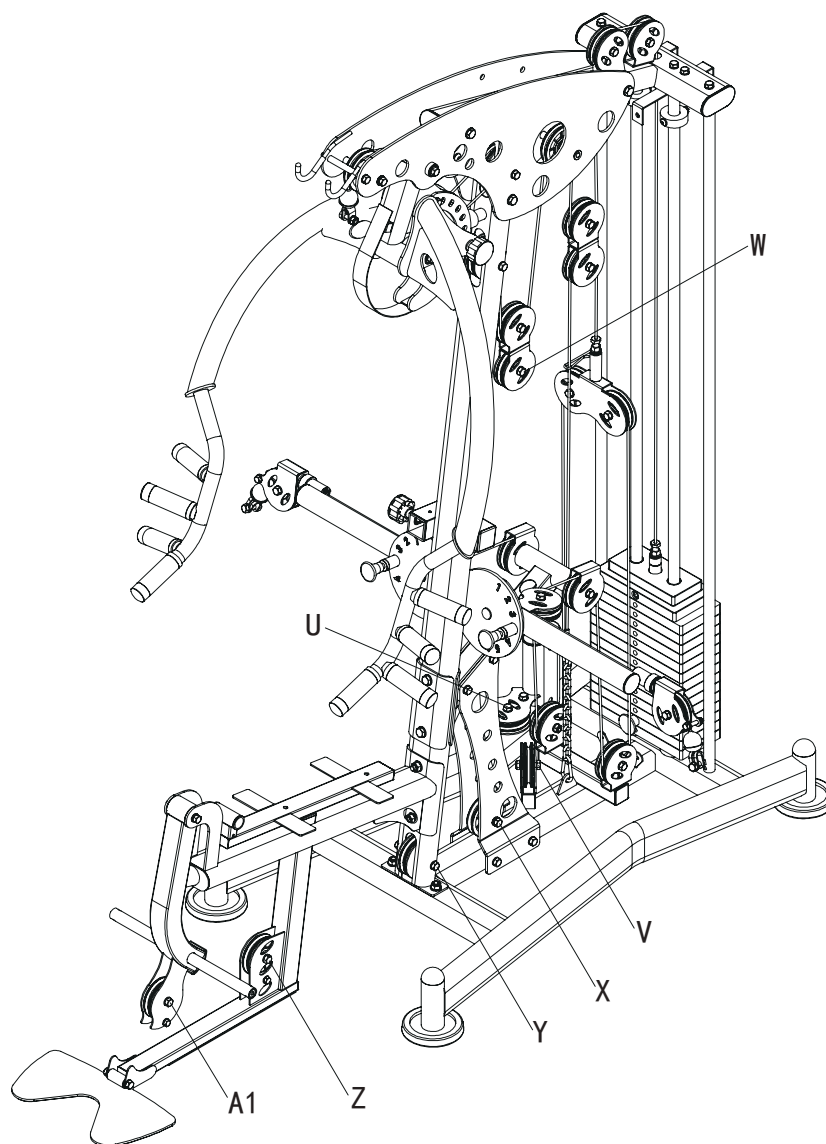
- 1 Fix 8 cps. pulley-55 fastening on point K,L,N,O,P,Q,R,S,T using M10*45 hexagon bolt-52, Φ 10 gasket-5, M10 lock nut-23.
- 2 Fix 2 cps. pulley-55 fastening on point M,R using M10*45 hexagon bolt-52, Φ 10 gasket-5.
- 3 Remove one end of the cable-64 containing the ball end.
- 4 Cable-64 head down end from point P according through point L,M,N,O,P,Q,R,S,T final installed ball head back to cable-64.
- 5 Installed M8*45 hexagon bolt-63, Φ 8 gasket-15, M8 lock nut-11 near point K,T.

Assembly step (12) explosion drawing



No.	Description	Note	Qty.
5	gasket	Φ10	22
11	lock nut	M8	2
15	gasket	Φ8	4
23	lock nut	M10	10
50	hexagon bolt	M10*130	2
51	hexagon bolt	M10*115	1
52	hexagon bolt	M10*45	4
55	pulley	Φ95*26	7
63	hexagon bolt	M8*45	2
65	hexagon bolt	M10*75	2
66	hexagon bolt	M10*85	1
67	powder metallurgy sleeve	Φ10	2
68	left support plate		1
69	right support plate		1
162	hexagon bolt	M10*40	2

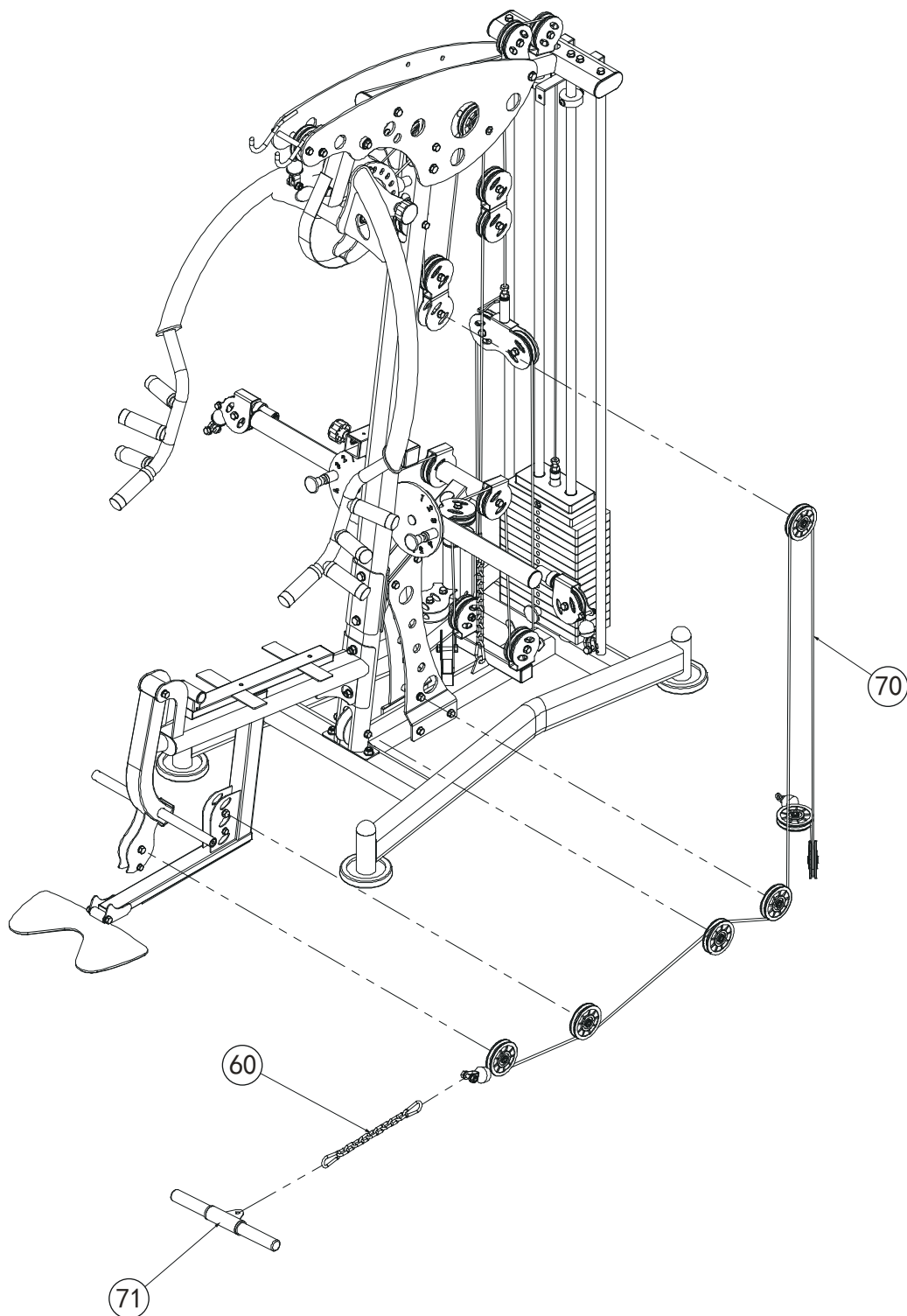
Assembly Step-12 Drawing



Assembly step-12 installation instruction

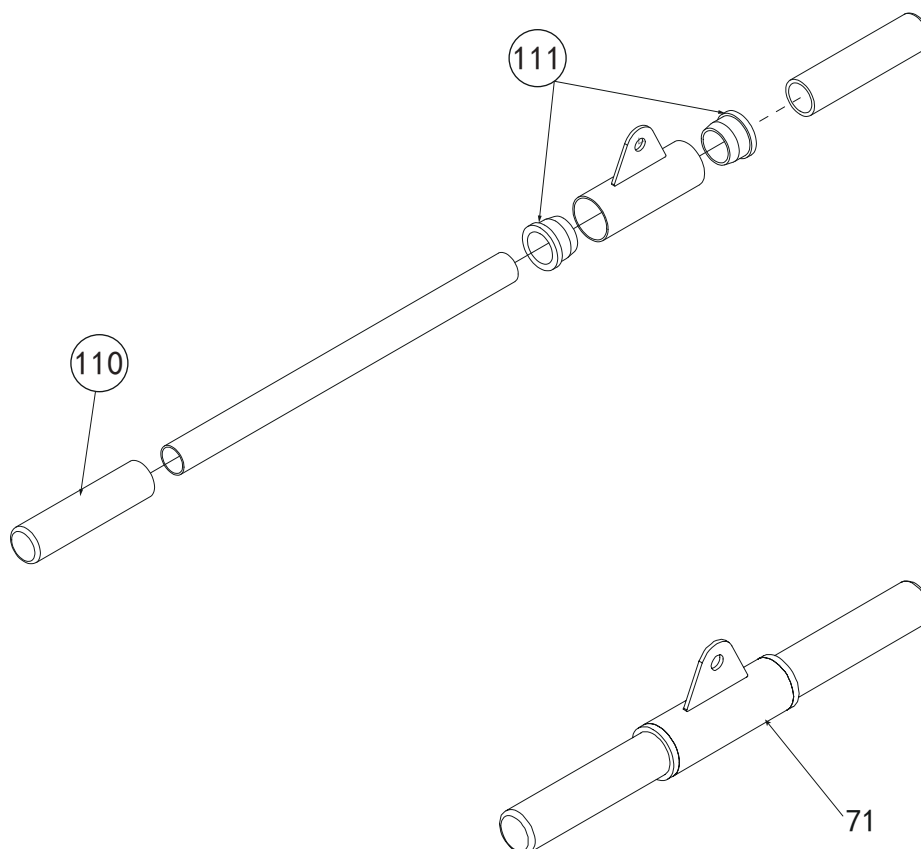
- 1 Fix left support plate-68 and right support plate-69 fastening on ground frame and upright frame using M10*130 hexagon bolt-50, M10*75 hexagon bolt-65, $\Phi 10$ gasket-5, M10 lock nut-23.
- 2 Fix 4 cps. pulley-55 fastening on point V,W,Z,A1 using M10*45 hexagon bolt-52, $\Phi 10$ gasket-5, M10 lock nut-23.
- 3 Fix pulley-55 fastening on point Y using M10*115 hexagon bolt-51, $\Phi 10$ gasket-5, M10 lock nut-23.
- 4 Fix pulley-55 fastening on point X using M10*85 hexagon bolt-66, $\Phi 10$ gasket-5, powder metallurgy sleeve-67, M10 lock nut-23.
- 5 Fix pulley-55 fastening on point U using M10*40 hexagon bolt-162, $\Phi 10$ gasket-5.
- 6 Installed M10*40 hexagon bolt-162, $\Phi 10$ gasket-5 near point U.
- 7 Installed M8*45 hexagon bolt-63, $\Phi 8$ gasket-15, M8 lock nut-11 near point A1,Z.

Assembly step (13) explosion drawing



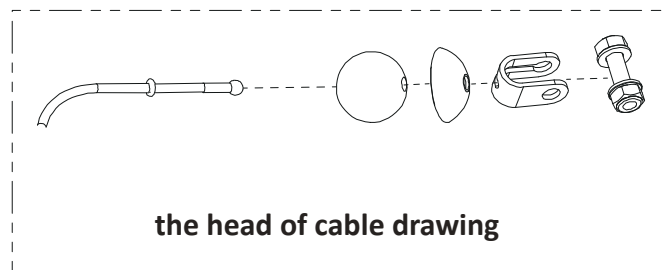
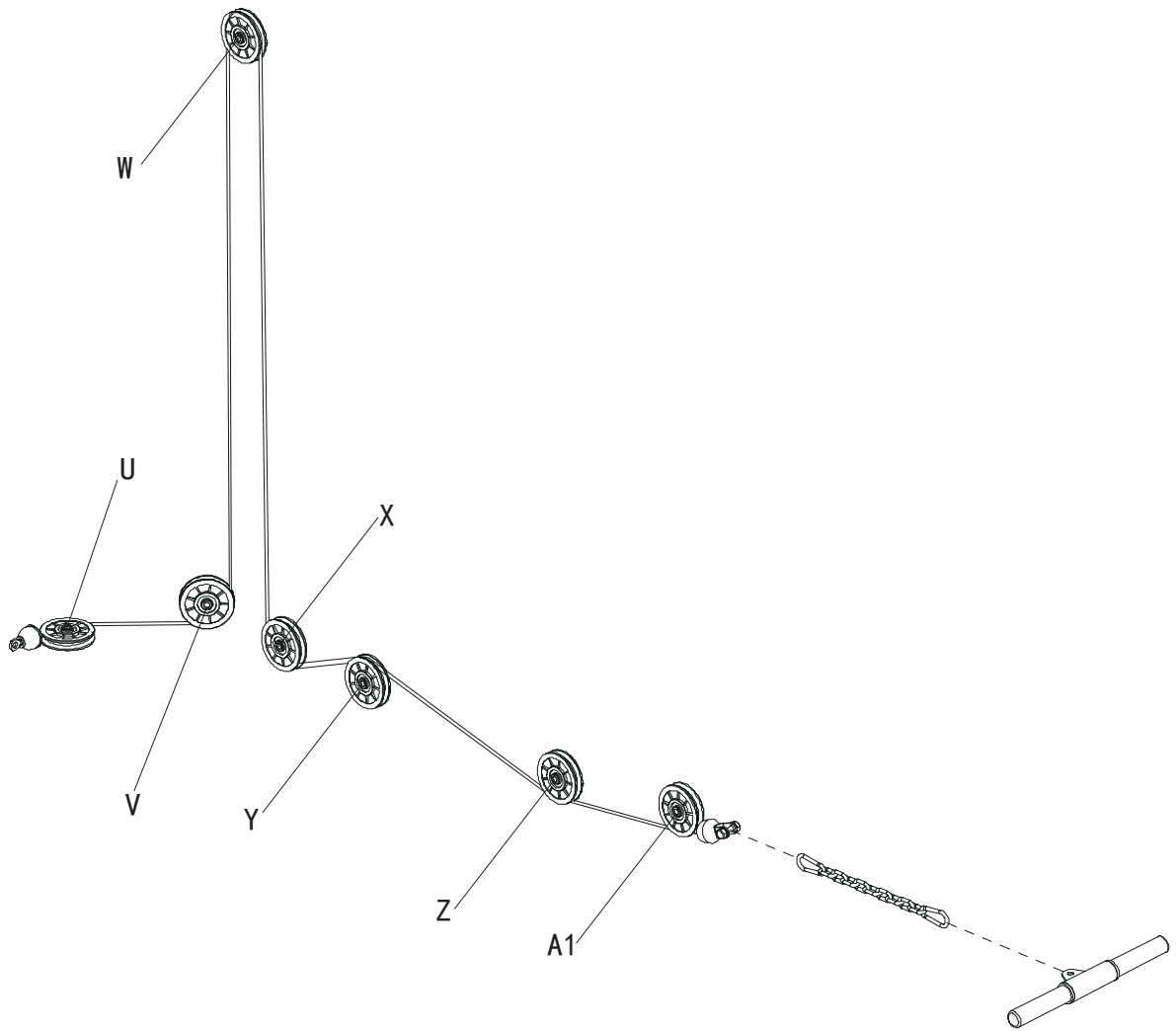
No.	Description	Note	Qty.
60	9 section chain + snap hook		1
70	cable	L=4225mm	1
71	short bar		1

Factory Assembly Drawing

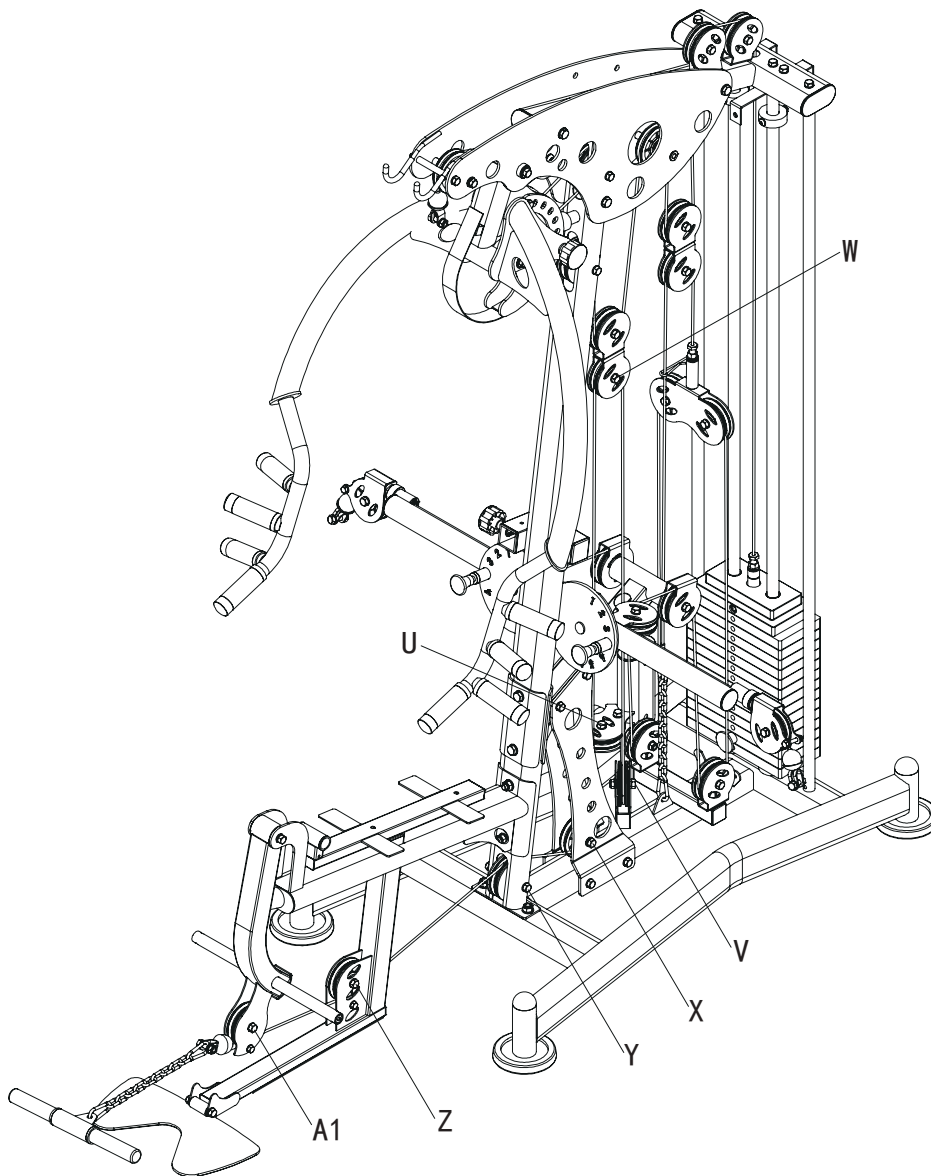


No.	Description	Note	Qty.
110	handle cover	$\Phi 25 \times 130$, one end open	2
111	tube plug	$\Phi 35 \times \Phi 27 \times 25$	2

Assembly step-13 cable drawing



Assembly Step-13 Drawing

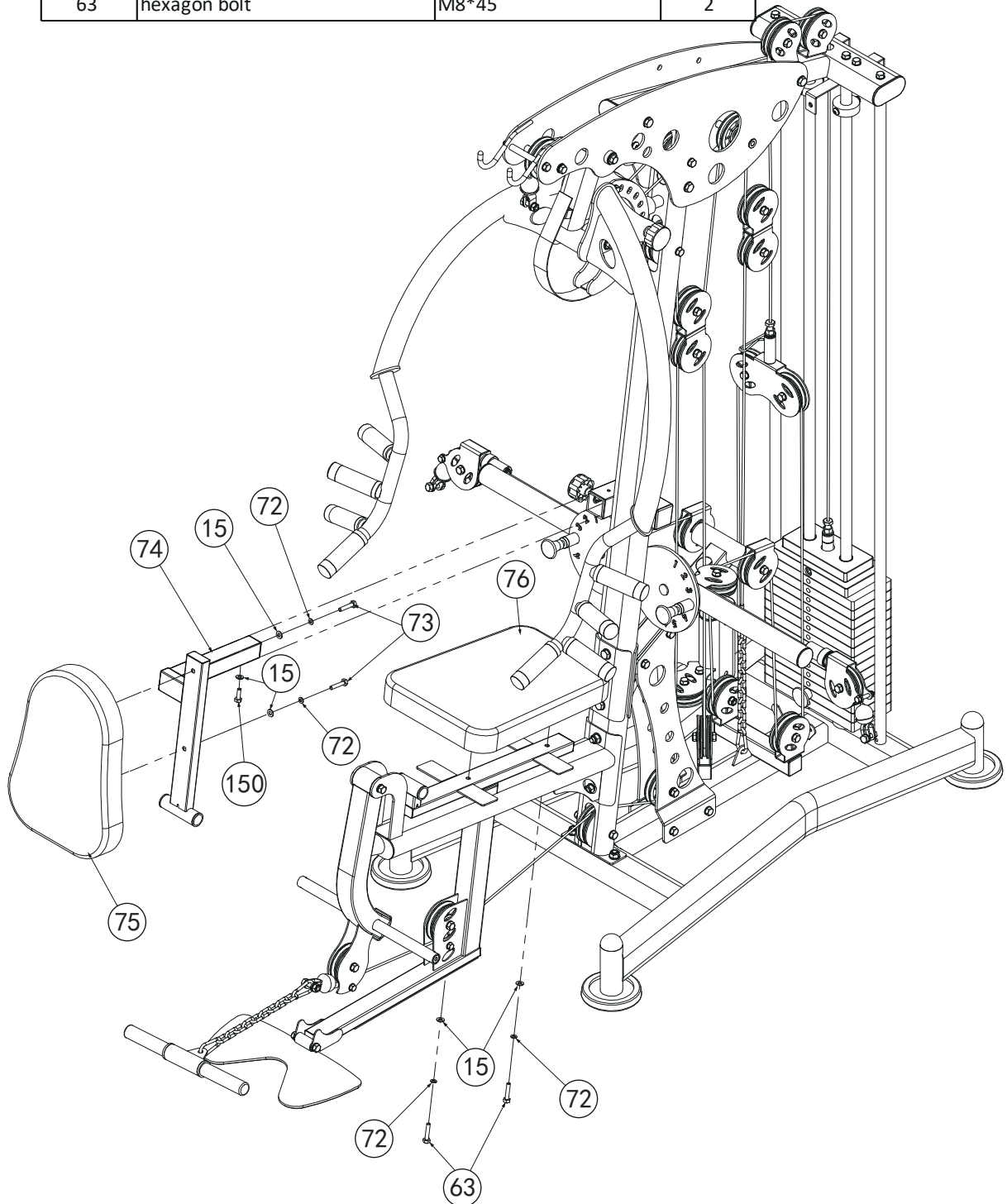


Assembly step-13 installation instruction

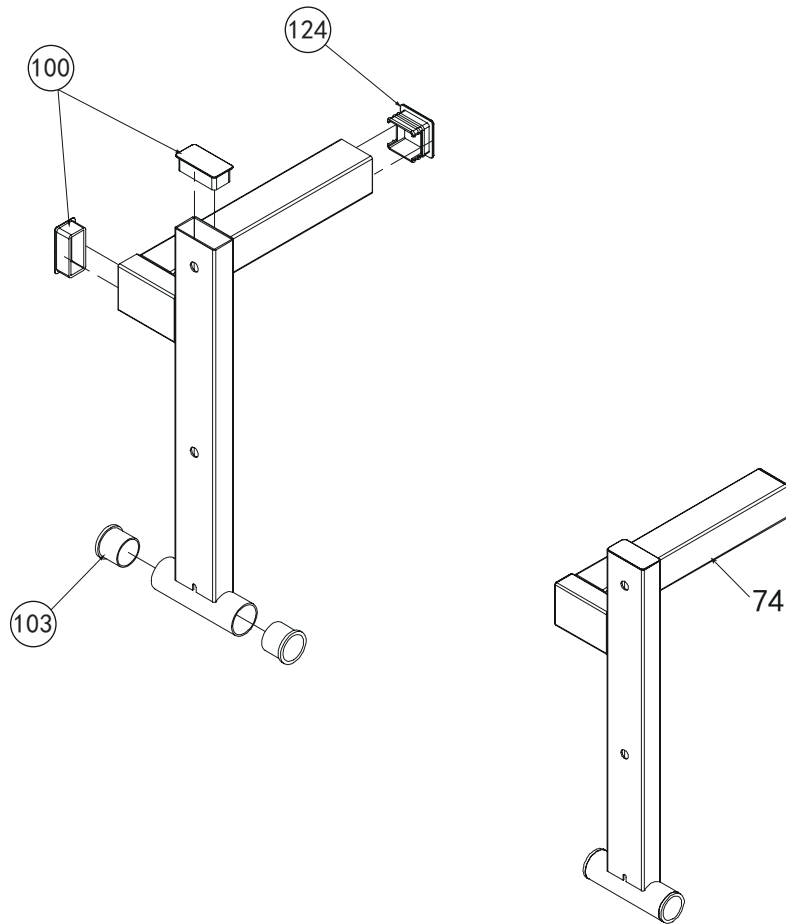
- 1 Remove one end of the cable-70 containing the ball end.
- 2 Cable-70 head down end from point U according through point V,W,X,Y,Z,A1 final installed ball head back to cable-70.
- 3 Connect 9 link chain + snap hook-60 with cable-70, 9 link chain + snap hook-60, other end connect with short bar-71.

Assembly step (14) explosion drawing

No.	Description	Note	Qty.
15	gasket	Φ8	5
72	spring gasket	Φ8	4
73	hexagon bolt	M8*40	2
74	back pad adjuster frame		1
75	back pad		1
76	seat pad		1
150	hexagon bolt	M8*25	1
63	hexagon bolt	M8*45	2

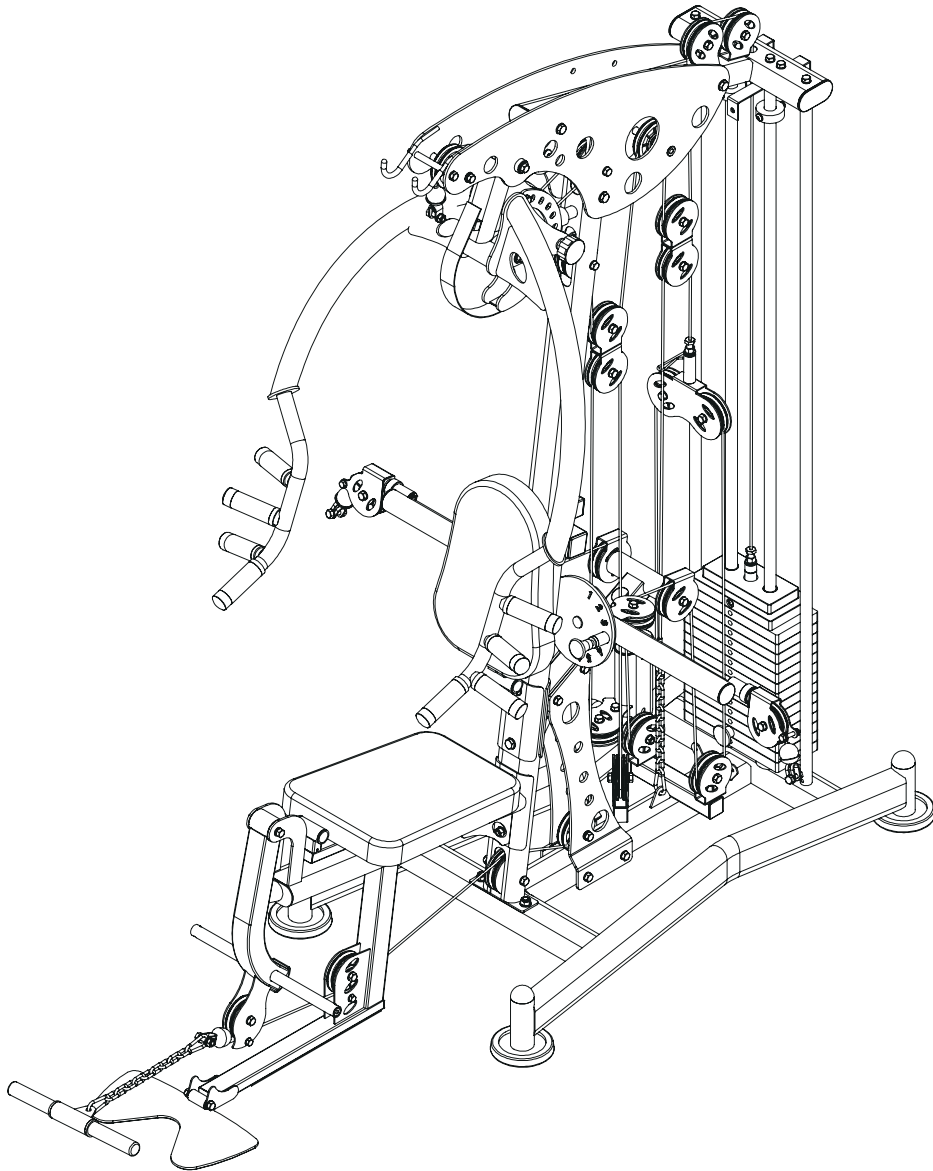


Factory Assembly Drawing



No.	Description	Note	Qty.
100	tube plug	□25*50	2
103	tube plug	Φ32*Φ26*25	2
91	tube plug	□40*40	1

Assembly Step-14 Drawing

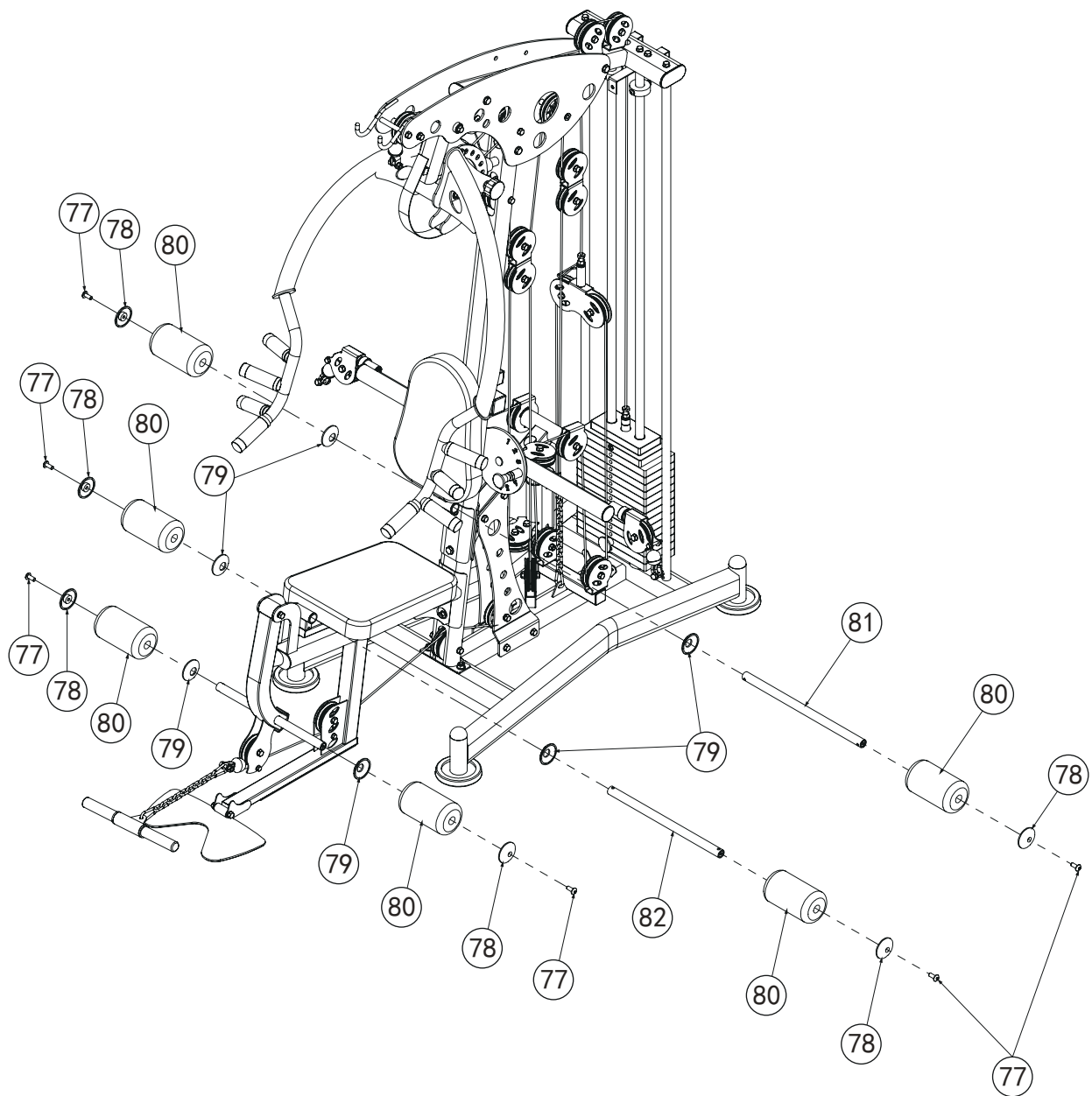


Assembly step-14 installation instruction

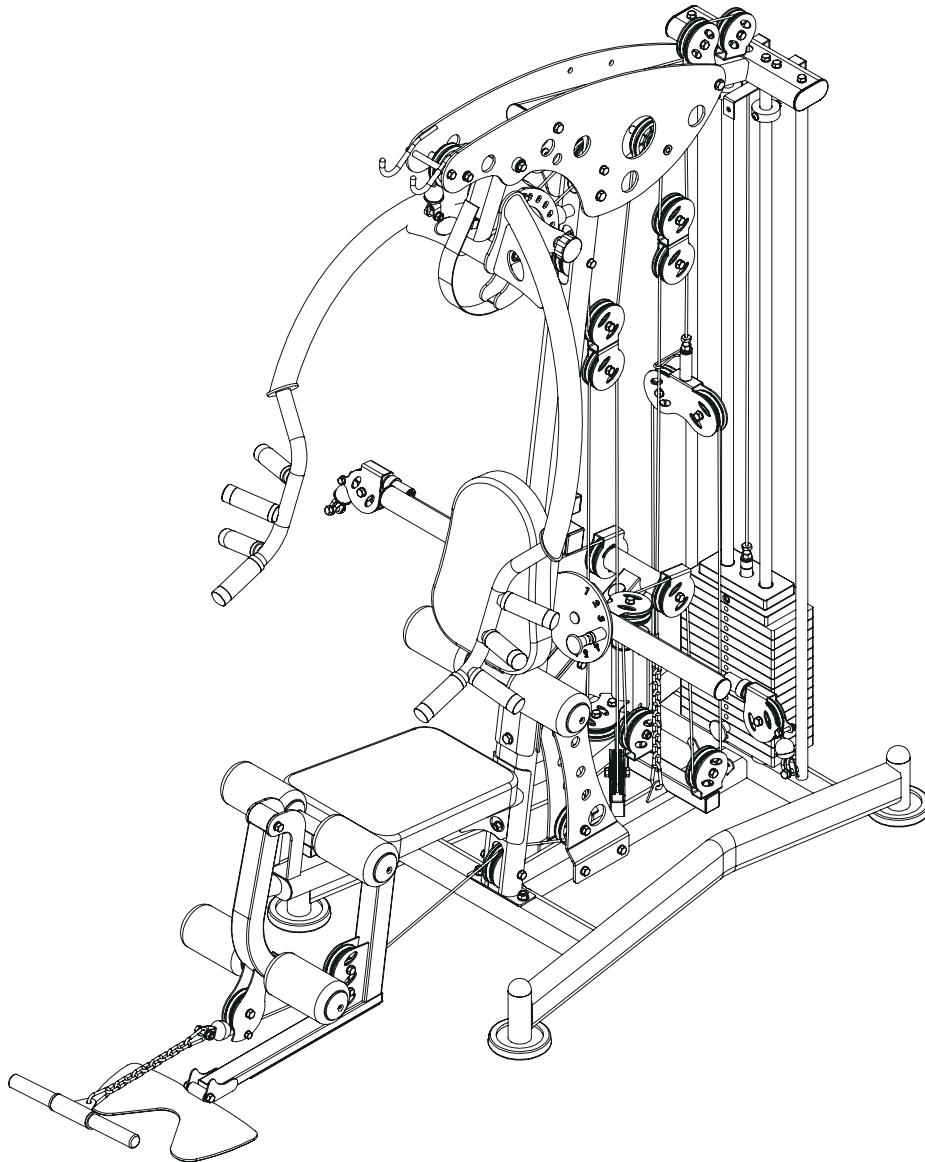
- 1 Fix seat pad-76 on seat pad adjuster frame using M8*45 hexagon bolt-63, Φ 8 spring gasket-72, Φ 8 gasket-15.
- 2 Fix back pad-75 on back pad adjuster frame-74 using M8*40 hexagon bolt-73, Φ 8 spring gasket-72, Φ 8 gasket-15.
- 3 Push back pad adjuster frame-74 fastening into upright frame using locking spring knob.
- 4 Fix back pad adjuster frame-74 on upright frame using M8*25 hexagon bolt-150, Φ 8 spring gasket-15.

Assembly step (15) explosion drawing

No.	Description	Note	Qty.
77	allen bolt	M8*25	6
78	foam outer cover		6
79	foam inner cover		6
80	foam	Φ100*75	6
81	foam rod	Φ25*480	1
82	foam rod	Φ25*450	1



Assembly step-15 drawing

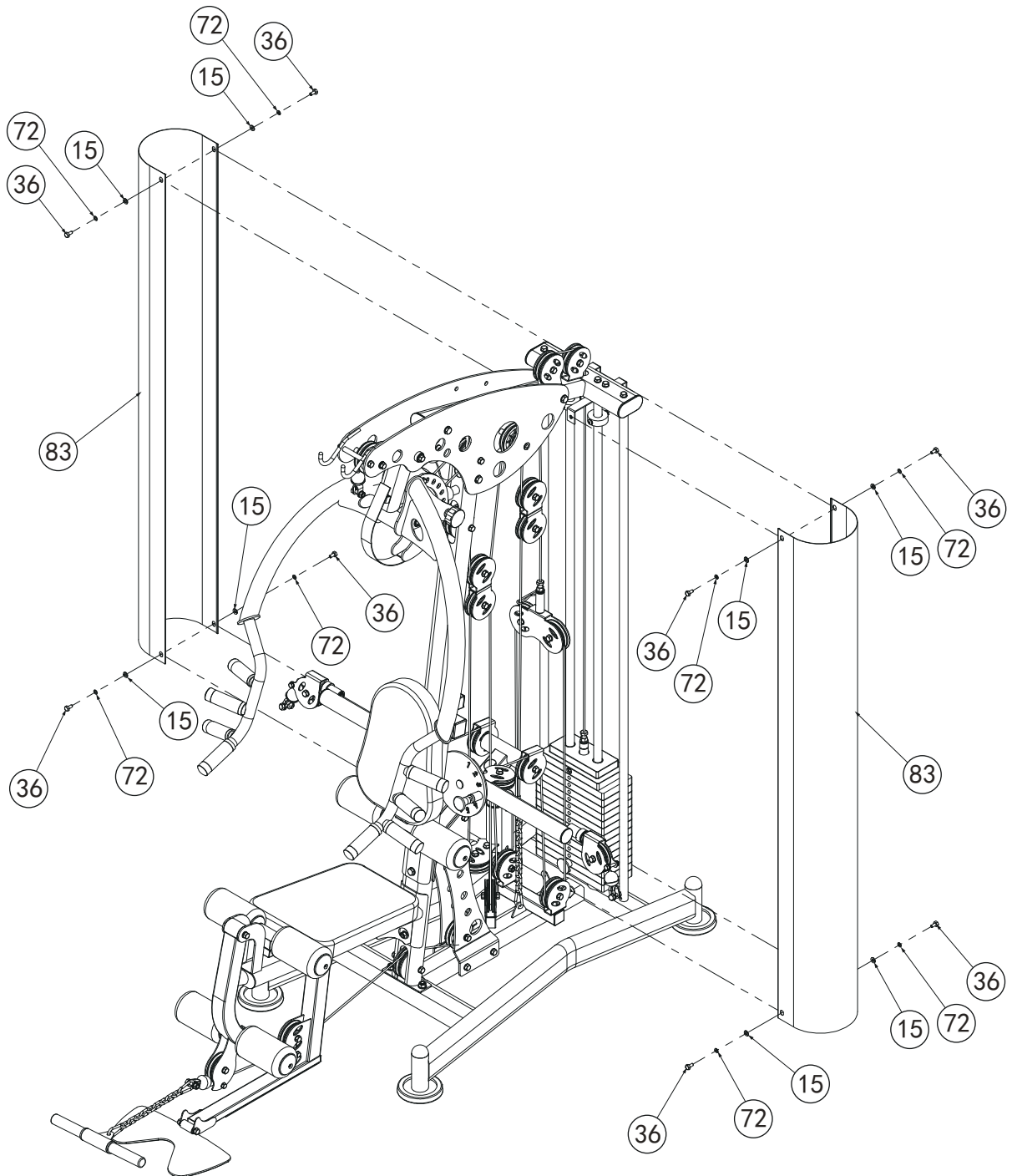


Assembly step-15 installation instruction

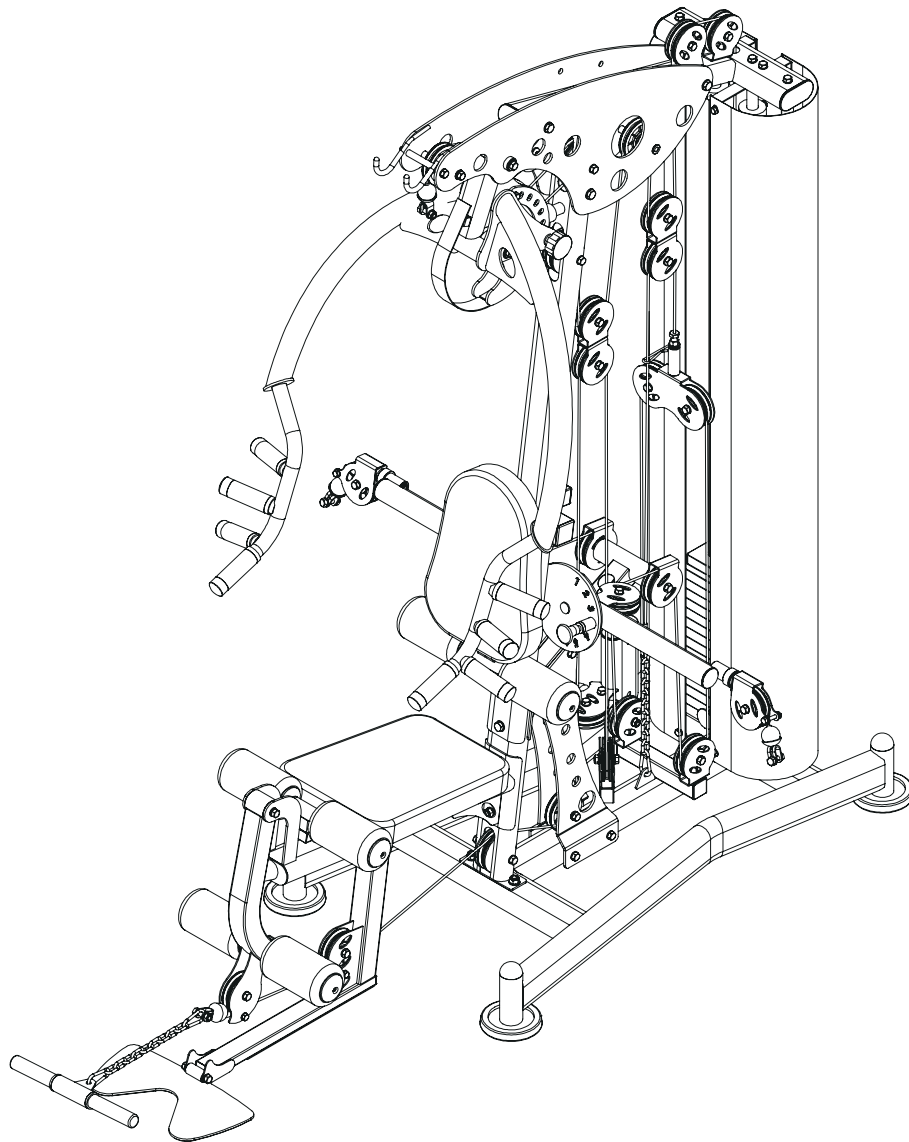
- 1 Push foam rod-81, into back pad adjuster frame and foam rod-81 turn into foam inner cap-79, foam-80, foam outer cap-78, M8*25 allen bolt-77.
- 2 Push foam rod-82, into seat pad adjuster frame and foam rod-82, turn into foam inner cap-79, foam-80, foam outer cap-78, M8*25 allen bolt-77.
- 3 Leg curl tube turn into foam inner cap-79, foam-80, foam outer cap-78, M8*25 allen bolt-77.

Assembly step (16) explosion drawing

No.	Description	Note	Qty.
15	gasket	Φ8	8
36	hexagon bolt	M8*16	8
72	spring gasket	Φ8	8
83	weight plate cover		2



Assembly step-16 drawing

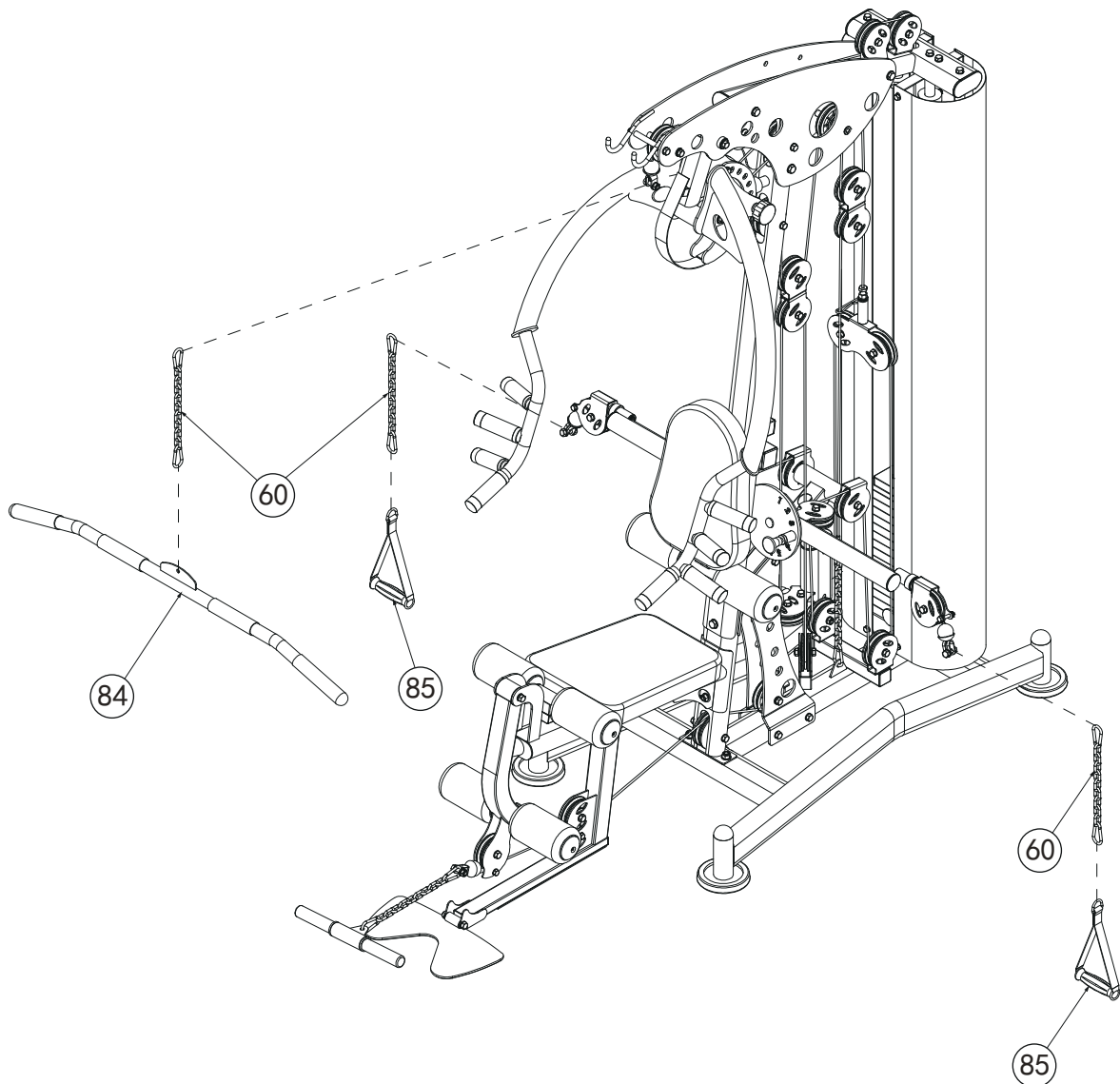


Assembly step-16 installation instruction

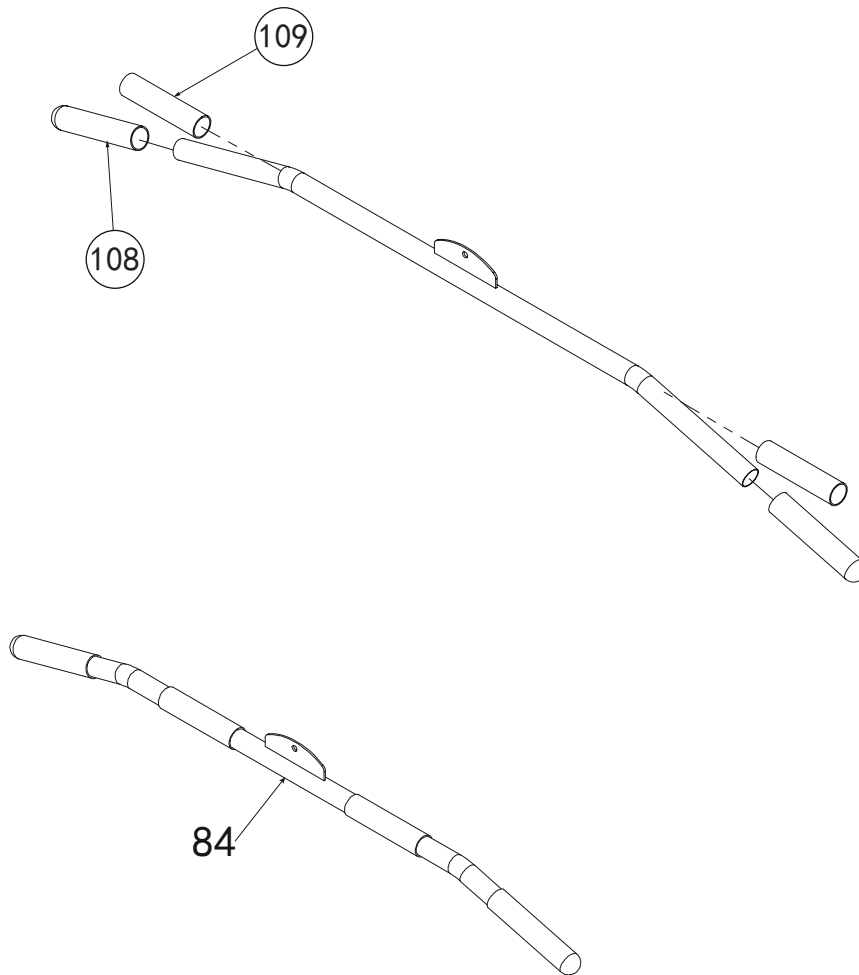
Fix shield-83 fastening on shield support frame and ground frame using M8*16 hexagon bolt-36, $\Phi 8$ spring gasket-72, $\Phi 8$ gasket-15.

Assembly step-17 explosion drawing

No.	Description	Note	Qty.
60	9 section chain + snap hook		3
84	long bar		1
85	handle belt		2

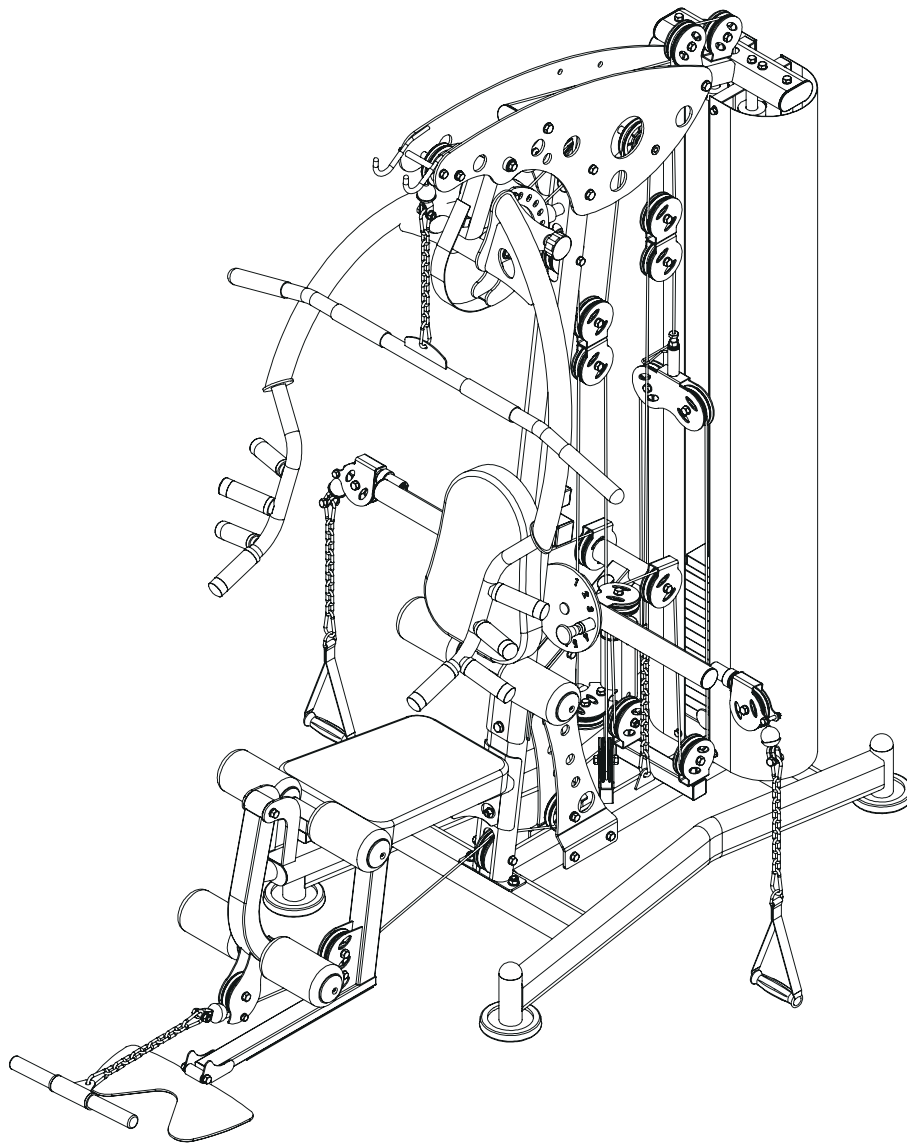


Factory assembly explosion drawing



No.	Description	Note	Qty.
108	handle cover	Φ32*180,one end open	2
109	handle cover	Φ32*150,both ends open	2

Assembly step-17 drawing



Assembly step-17 installation instruction

- 1 Connect 9 link chain + snap hook-60 with handle belt-85, 9 link chain + snap hook-60 other end hang on cable ball head.
- 2 Connect 9 link chain + snap hook-60, with long bar-84, 9 link chain & snap hook-60, other end hang on cable ball head.

CAUTION: check whether the bolts, locking nuts and latching pin of the whole machine are tightened before use.