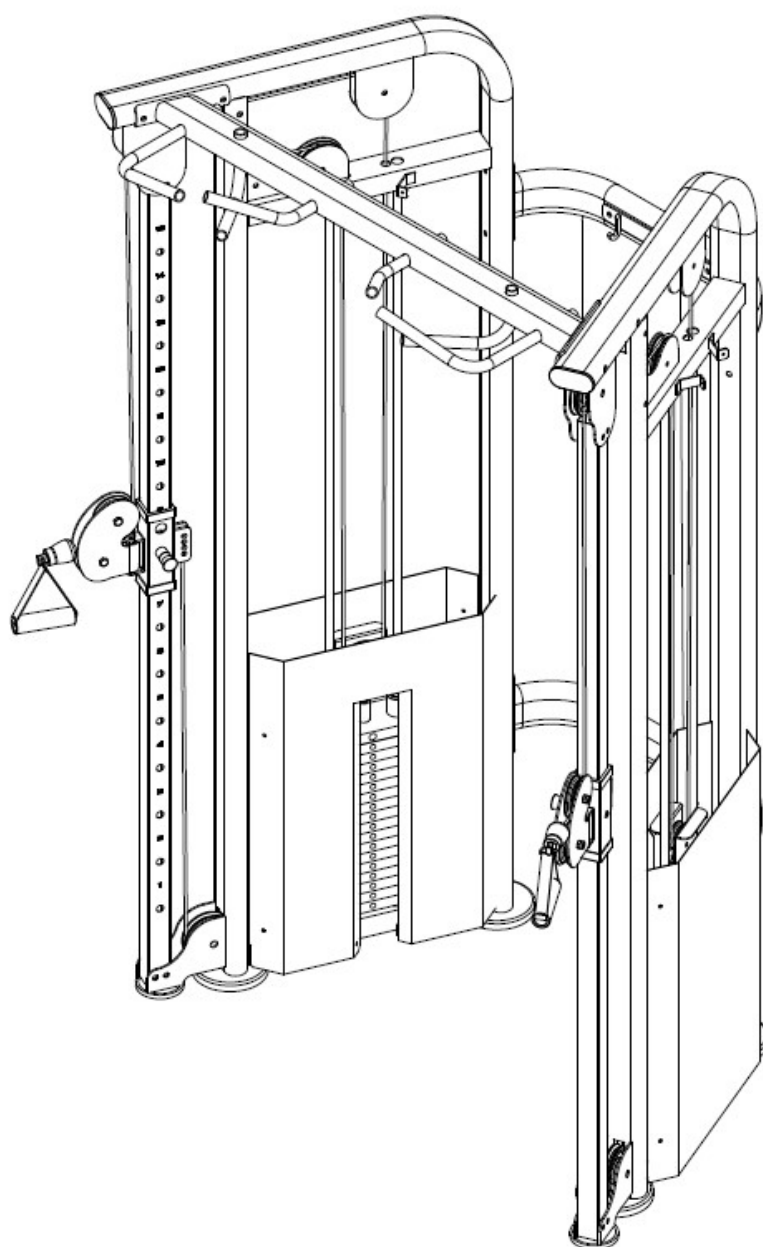
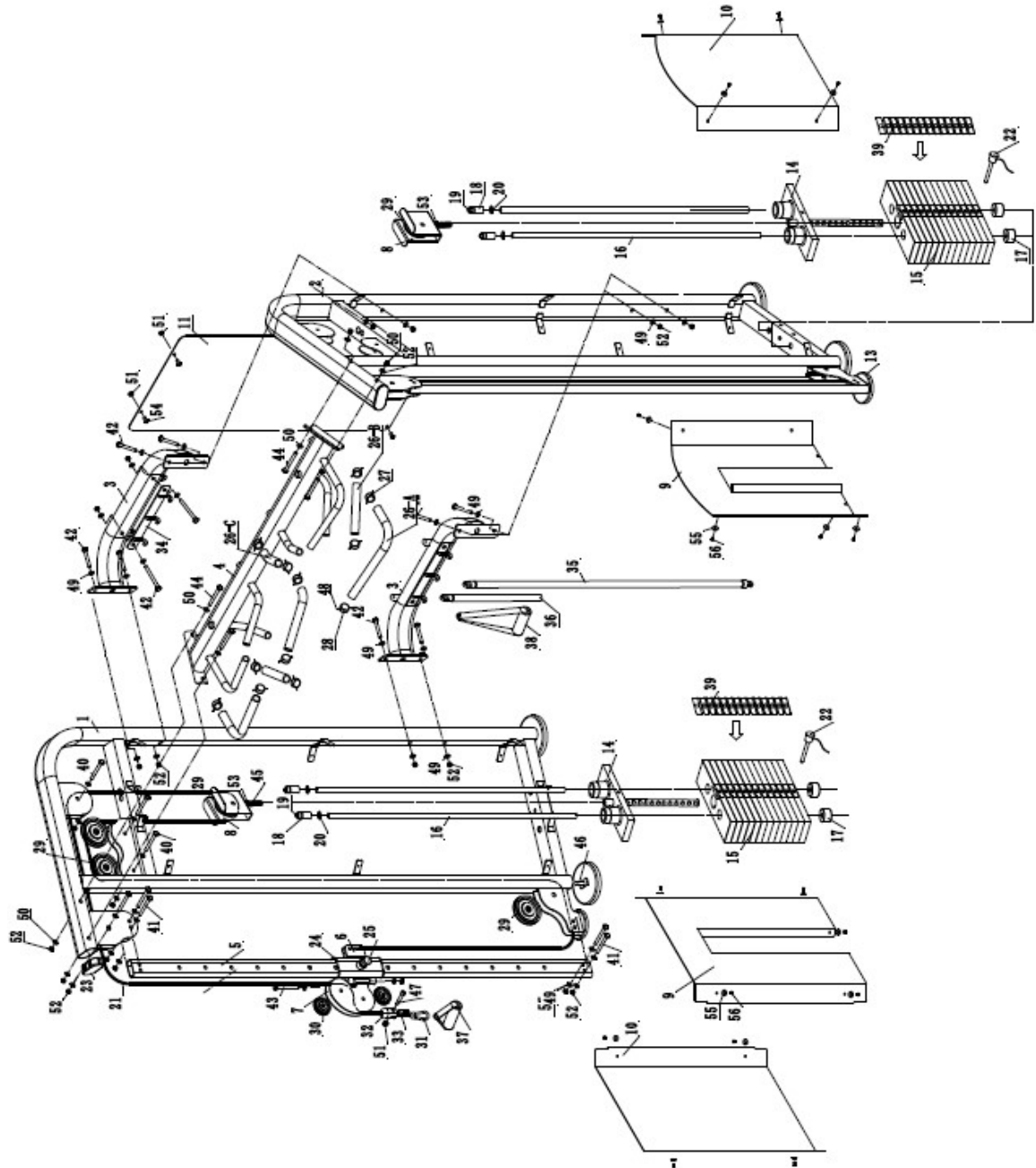




**HIT FITNESS COMM STEALTH
FUNCTIONAL TRAINER
HIT00997**



EXPLORE DRAWING



PART LIST

PART NO	PART NAME	Q'TY
1	Left main frame	1
2	Right main frame	1
3	Rear connect support	2
4	Up support frame	1
5	Adjustable fixed tube	2
6	Adjustable moving frame	2
7	Moving wheel frame	2
8	Moving pulley frame	2
9	Front cover	2
10	Rear cover	2
11	Middle cover	1
12	Ground plate	4
13	Round foot cushion	2
14	Top plate	2
15	Weight stack	38
16	Guide rod	4
17	Damping block	4
18	Fixed sleeve of guide rod	4
19	M10*20mm Hex socket fastening screw	4
20	Shaft circlips	4
21	Steel wire rope	2
22	Strong magnetic latch	2
23	Oval plug	2
24	Adjust bush	4
25	Pull pin assembly	2
26-A	Dipping plastic handlebar A	2
26-B	Dipping plastic handlebar B	2
26-C	Dipping plastic handlebar C	2
27	Aluminum gear sleeve	6
28	Aluminum cover	6
29	Big pulley	12
30	Small pulley	4
31	Hoist hook	2
32	Steel wire rope cover	2
33	Steel wire rope fix sleeve	2
34	Hook frame	2
35	Long hang rod	1
36	Short hang rod	1
37	Short drawstring	2
38	Long drawstring	2

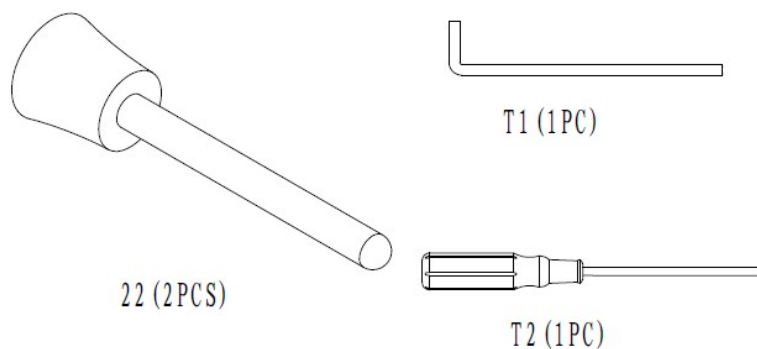
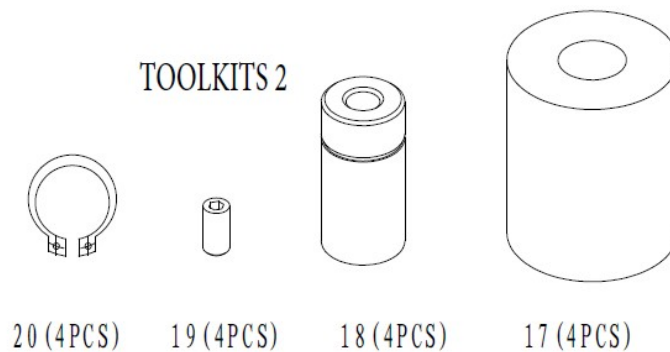
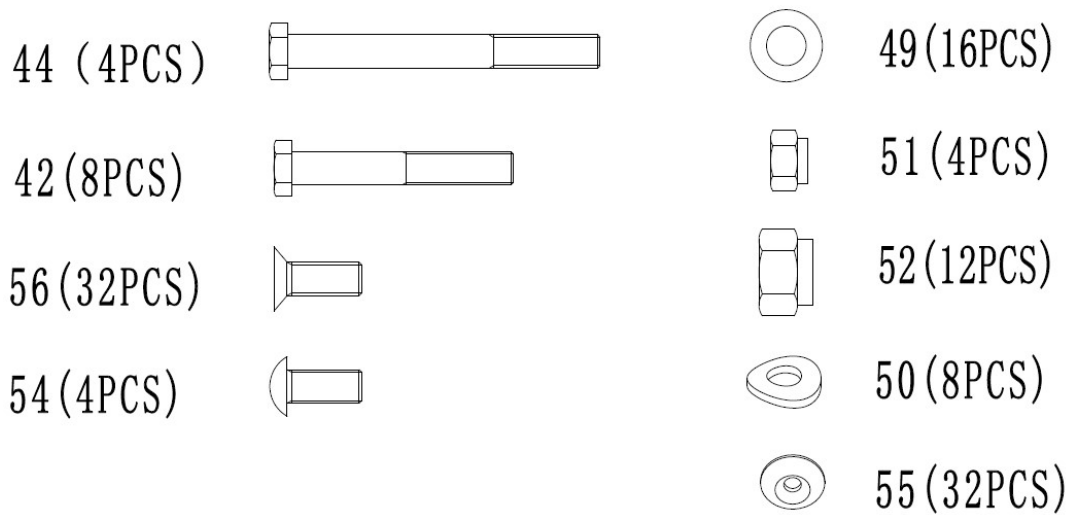
39	Weight stack label	2
40	M10*50mm bolt	12
41	M10*55mm bolt	12
42	M10*70mm bolt	12
43	M10*100mm bolt	2
44	M10*120mm bolt	4
45	M16*90mm bolt	2
46	M16*40mm bolt	4
47	M8 Nut	2
48	M4*3 Fasten bolt	8
49	Ø10 Washer	84
50	Ø10 Arc Washer	8
51	M8 Nylon nut	10
52	M10 Nylon nut	44
53	M16 Nylon nut	4
54	M8*15mm Hex socket umbrella head bolt	4
55	Plastic washer	32
56	M5*15mm Countersunk head screw	32
Note: Some parts in above list have been assembled in advance.		

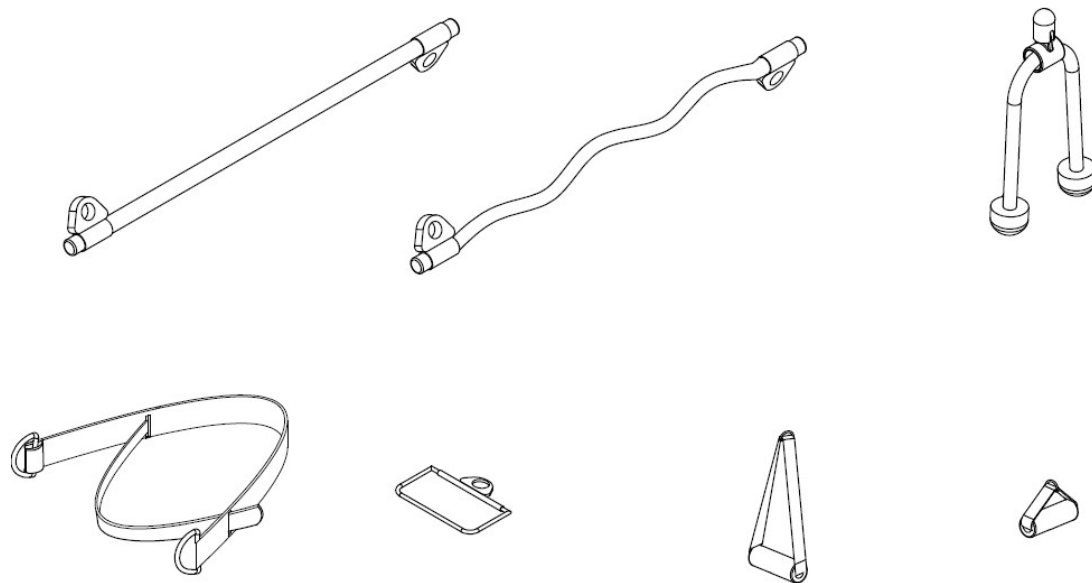
HARDWARE LIST

PART NO	PART NAME	Q'TY
44	M10*120mm bolt	4
42	M10*70mm bolt	8
56	M5*15mm bolt	32
54	M8*15mm bolt	4
49	Ø10 Washer	16
50	Ø10 Arc Washer	8
55	Plastic washer	32
51	M8 Nylon nut	4
52	M10 Nylon nut	12
22	Strong magnetic latch	2
17	Damping block	4
18	Fixed sleeve of guide rod	4
20	Shaft circlips	4
19	M10*20mm Allen head bolt	4
T1	5# Allen Wrench	1
T1	Screw driver	1
Note: Part of bolts in hardware list have been assembled in advance, please disassembled them before assembly.		

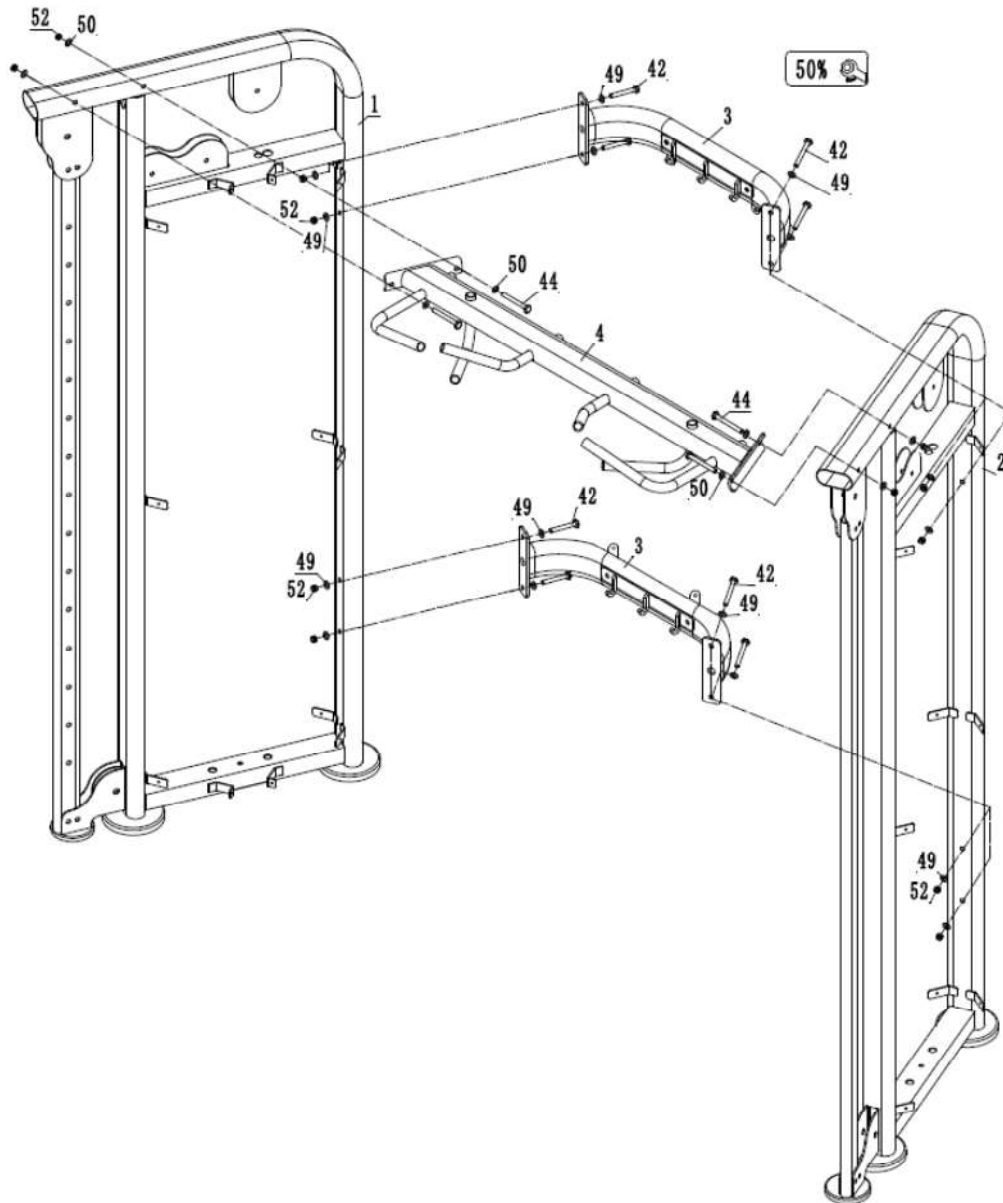
ACCESSORY LIST

PART NAME	Q'TY
Short drawstring	2
Long drawstring	2
Straight rod with 2 lug s	1
Curved bar	1
Tricep handlebar	1
Handlebar sleeve	1
Gantry handle	2
Note: Part of bolts in hardware list have been assembled in advance, please disassembled them before assembly.	



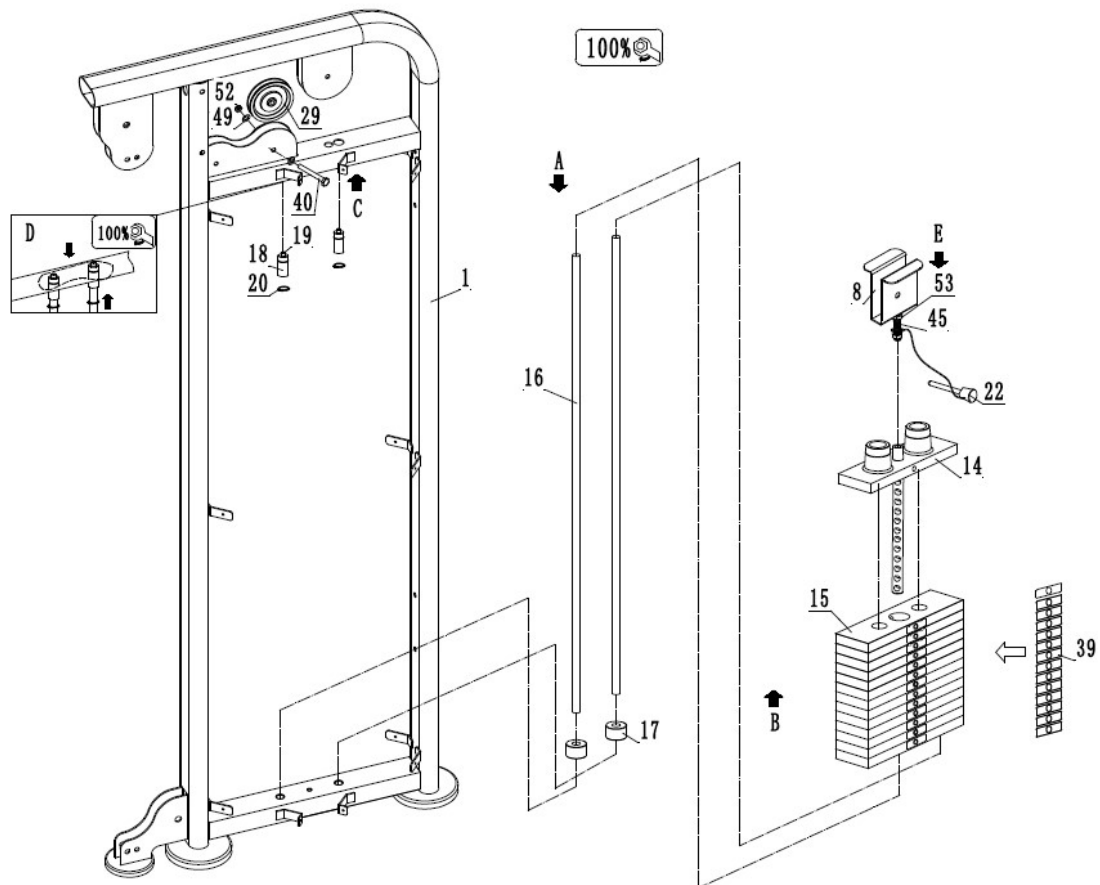


ASSEMBLING INSTRUCTIONS



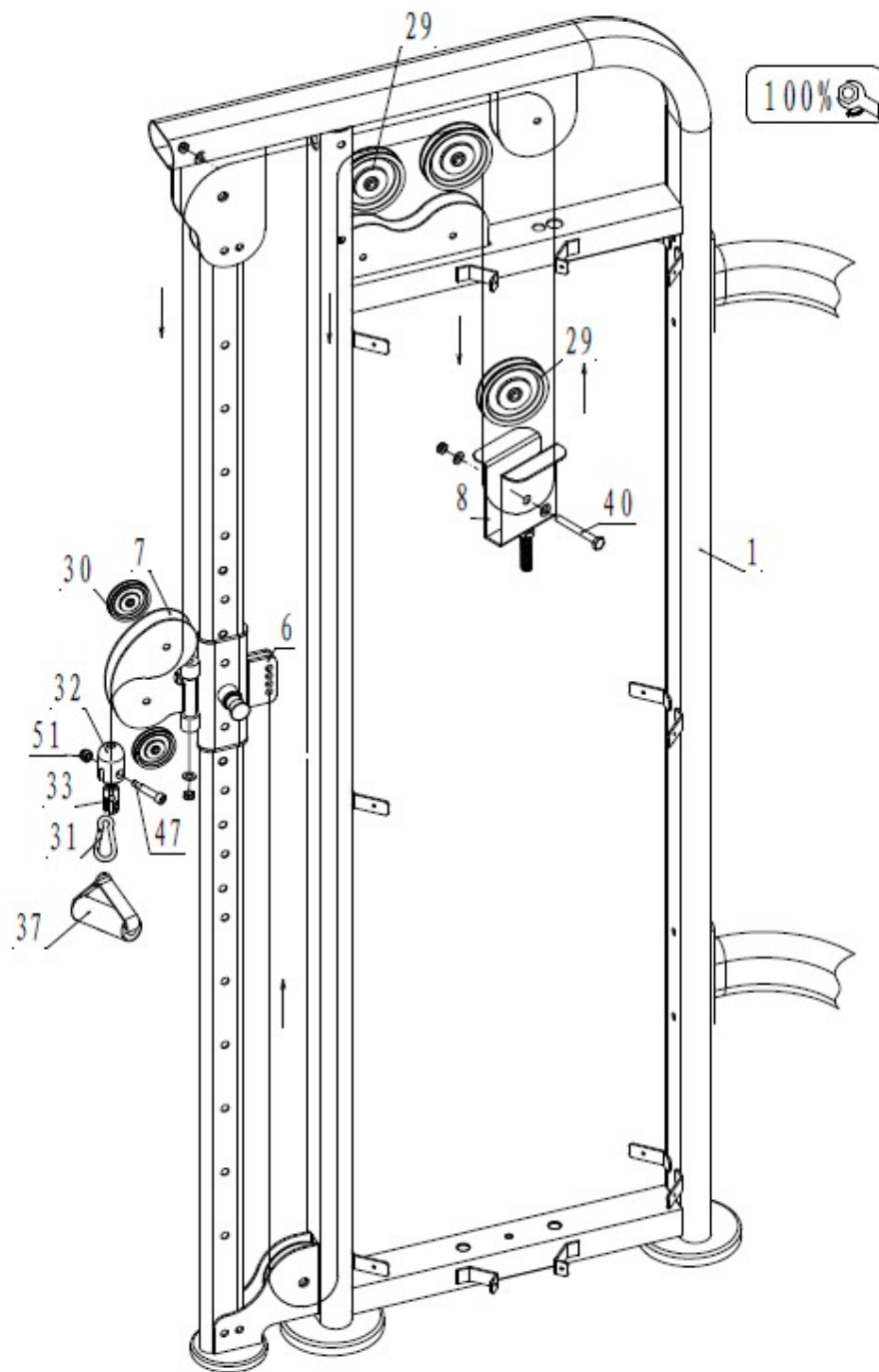
STEP 1:

1. Fix Rear connect support 3 to Left main frame 1 and Right main frame 2 with M10*70mm bolt 42, M10 Nylon nut 52 and Ø10 Washer 49.
2. Fix Up support frame 4 to Left main frame 1 and Right main frame 2 with M10*120mm bolt 44, M10 Nylon nut 52 and Ø10 Arc Washer 50.



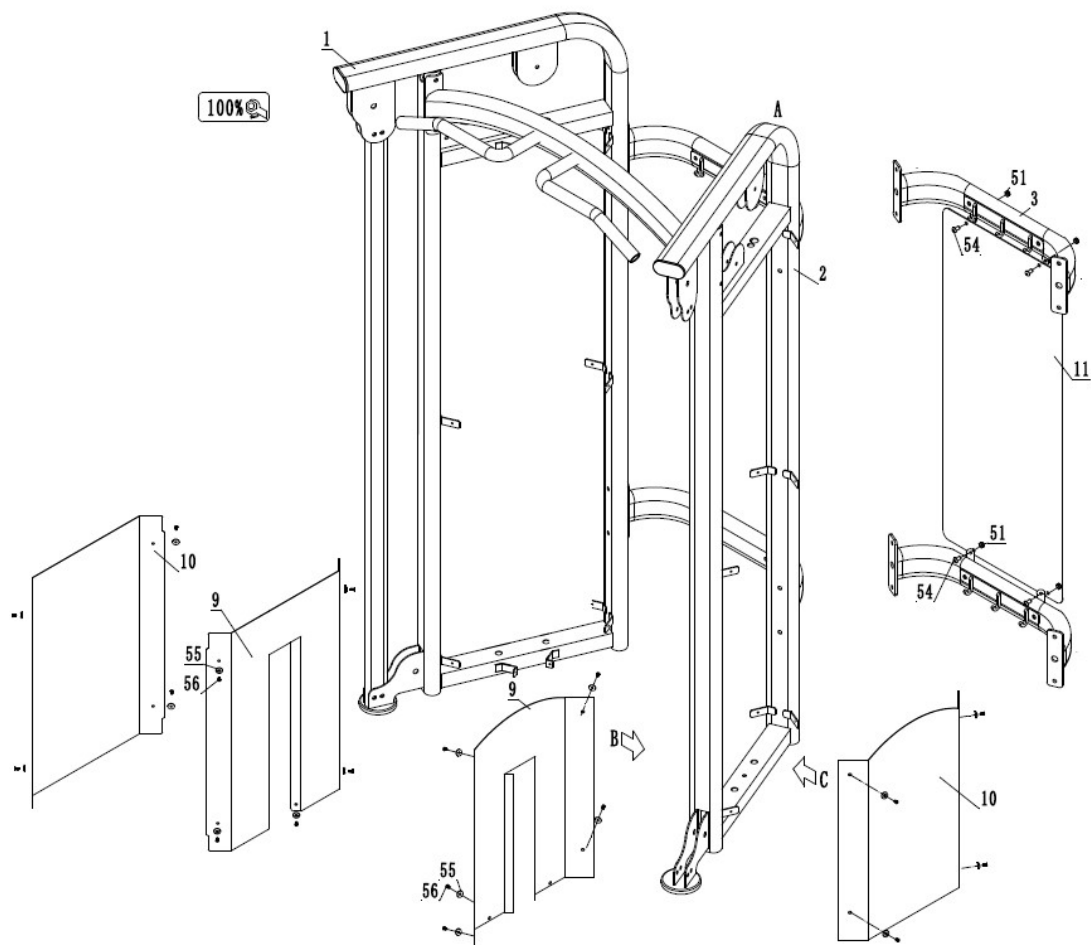
STEP 2:

1. Insert Damping block 17 and Guide rod 16 to Left main frame 1 and Right main frame 2, then fix Weight stack 15 and Top plate 14 to Guide rod 16.
 2. Fix another end of Guide rod 16 to Left main frame 1 and Right main frame 2 with Fixed sleeve of guide rod 18, M10 * 20mm Allen head bolt 19, Shaft circlips 20 and M10 * 50mm bolt 40.
 3. Fix Moving pulley frame 8 to Top plate 14 with M16*90mm bolt 45 and M16 Nylon nut 53.
 4. Put Weight stack label 39 to Weight stack 15.
- Fix in order A-B-C-D-E



STEP 3:

1. Fix Big pulley 29 to Moving pulley frame 8 with M10*50mm bolt 40.
2. Steel wire rope 21 goes as shown above.
3. Fix Small pulley 30 to Moving wheel frame 7.
4. Fix Steel wire rope cover 32 and Steel wire rope fixed sleeve 33 to Steel wire rope 21 with M8 Nut 47 and M8 Nylon nut 51.
5. Fix Hoist hook 31 and Short drawstring 37 to Steel wire rope fixed sleeve 33.



STEP 4:

1. Fix Middle cover 11 to Rear connect support 3 with M8*15mm Allen head bolt 54 and M8 Nylon nut 51.
2. Fix Front cover 9 and Rear cover 10 to Left main frame 1 and Right main frame 2 with Plastic washer 55 and M5*15mm Countersunk head screw 56.